

# Nanaimo Quilters Guild Newsletter

## Volume 27 Issue 4 December 2010



[www.islandquilters.ca](http://www.islandquilters.ca)



### Next Meeting

**December 8 EVENING ONLY!**

Brechin United Church

Doors open at 5:30 Dinner at 6:00

### Next Executive Meeting

**December 6 1:30 p.m.**

Country Grocer, Southgate

### Newsletter Deadline

**December 22** (22nd of each month)

Note: initials are used in the newsletter for those members who do not wish their names to appear on the web. *Editor*

### Things to Remember:

- name tag
- pot luck dish, placemat, dishes, cutlery, and your own cup!!!
- Christmas Gift ~\$10 (if exchanging)
- Christmas Gift bag (if donating one)
- donation quilts, show & share
- change for raffles
- block of the month (for December)
- newsletter

### January's Yummy Baking

For **January**, it will be the turn of everyone with a **surname beginning with H, I, J, or K** to bring goodies to the meeting.

### Membership/Hospitality

Please stop at the Hospitality table when you arrive, sign in, and pick up your ticket for the name tag draw. **You must be wearing your name tag in order to win the draw.** Please sign out if you leave before the end of the meeting.

### Guild Website

If you have something of interest for our Guild website, please send it to Avril Valentine at [avrilvalentine@shaw.ca](mailto:avrilvalentine@shaw.ca) who will forward it to our web master.

### Cancellation of Meetings

When a Guild meeting is cancelled due to inclement weather (e.g. snow) members will be notified after 10 a.m. by email, and if they do not have email, then by telephone. Please remember to check your email

### From Our President's Pen

Let it Snow, Let it Snow, Let it Snow. It looks nice doesn't it ? but not so nice if you have to travel around in it. Your e-mail/telephone committee leader Holly Wells has an article in this newsletter regarding cancellation of meetings due to inclement weather and other emergencies. Please read it and post on your calendar for the winter months. We escaped it for our November meeting but if the weather forecasters are correct, this is going to be a snowy winter for us and we may not be so lucky next time.

I apologize to all the members who came prepared for a discussion and vote on our Constitution and Bylaws. I am at fault for not giving this priority on the November agenda. As our next meeting is our Christmas Pot Luck and Barbara Root will be away January and February, she has worked really hard on this project and should be here, I will let you know when this is to be rescheduled.

The Homewood retreat registration vote: there were many suggestions from the floor at the meeting and I have received a number of e-mails since the meeting. These will be discussed at the next executive meeting and the membership will be informed of the form the vote will take and the date of the vote.

Food Bank donations: November was another good month for the food bank through our donations, thank you to all who participate in this worthwhile cause. For those who like to have suggestions for the December Christmas donation: Pasta, Rice or Stuffing and since it is Christmas maybe you could also donate something fun e.g. foil covered chocolate coins or bells, fancy cookies, or anything you think might be nice to receive. Again many thanks on behalf of the recipients of your generosity.  
*President Norma Franks*

### Quilters and Snowmen Christmas Party December 8

Doors open at 5:30 pm, dinner starts at 6:00 pm. There will be games and musical entertainment by Graham Gates. If you would like to participate in a voluntary gift exchange, bring a wrapped gift of a quilting related item (eg. fabric, fat quarters, notion, pattern) of approximately \$10.00 value. Also, bring a dish to share, food bank donation, plate, cutlery, & mug, show and share and a big smile. There will be punch and prizes.

*The Christmas Potluck Committee*

### Information on Cancellation of Meetings

When the President and Executive decide to cancel a Guild Meeting due to inclement weather (e.g. snow) the membership will be notified after 10 a.m. on the day of the meeting. Those who receive their Newsletter by email will receive an email notification, and those who do not have email will be telephoned. This one notification will pertain to both the afternoon and evening meetings.

If inclement weather occurs later in the day of the meeting then the membership will be notified of the evening Meeting cancellation after 4 p.m. Those who receive their Newsletter by email will receive an email notification, and those who do not have email will be telephoned.

Please use your own discretion during inclement weather.

When a Guild meeting is cancelled due unforeseen circumstances (e.g. flooding of the church basement) the Phoning Committee will attempt to contact all members by telephone as soon as possible after the unforeseen event.

If you have any questions please contact me. *Holly Wells, Phoning Committee*  
[hwells@shaw.ca](mailto:hwells@shaw.ca)

**NQG Box 943 Nanaimo BC V9R 5N2 Editor [suecreba@aquariusd.com](mailto:suecreba@aquariusd.com)**



## Program

We were lucky to have Heather McArthur here to present her new magazine "Quilter's Connections". She showed us samples of quilts made from patterns in previous magazines and stressed that everything in it is Canadian, from quilt show ads, articles, designs, fabric producers etc. She also said that submissions to her magazine don't have to come from experts. Actually, she was talking to some ladies before the evening meeting and heard about our "Sewing Room Tour" from a previous year and would love someone to write it up for her magazine. If anyone would like to do that, Carol-Anne Chemko has lots of pictures that could go with it. Another idea might be for the group that did the triptych to do a write-up of their adventure. From the line up at the front after the presentation, I would say that people were very interested in her magazine and many took out subscriptions. Heather also donated a subscription to our library!

The December meeting is the pot-luck – see page one.

In January, we have some presenters from our own island. David and Leslie Haynes from "Buckingham Stencils" will be doing a presentation of the stencils that they design and produce themselves. They will show how effective they can be in enhancing our quilted projects. We will also be taking registrations for the FEBRUARY MINI-DEMOS at the January meeting. The ladies who are teaching will have their samples there so that you can see which group you would like to join. As we did in October, you will sign up for a first session and then a different presentation for the second session. Each session is 30 minutes. We would like to thank these ladies for giving their time, not only for the presentations but also for the preparation. Remember that you need to choose 2 sessions.

We have put a limit of 10 on each demo as that is how many chairs fit comfortably around the table. The first 10 who signed up should get these chairs and if people wish to join, they are welcome but will probably need to stand. MINI DEMOS:

1. Patty McRory presenting photo composition for cameras and landscape quilts. BRING YOUR CAMERA AND MANUAL
2. Cindy Scraba presenting threadology. Cindy knows all of the ins and outs of different types of threads and the needles that work best with them.

3. Val Ursulak showing us how to make molas. This is a folk art of the Cuna Indians in Panama and works in well with our quilting or stitchery projects.

4. Sandra Radley is going to show how to make 5 sided log cabins around a feature fabric.

These 4 ladies will be presenting both afternoon and evenings. In order to accommodate all of the ladies in the afternoon, we have another 4 sessions to choose from.

5. Betty Hamilton demonstrating how to make silk flowers

6. Patty Jones presenting flying geese

7. Sue Creba showing us how she used bleach to create clouds for her landscape project

8. Audrey Lloyd presenting beginning paper piecing

If there was a mini demo that you were unable to attend and would like to have it presented again, please let us know.

*The Program Committee*

## Library News

*A record number of library materials were checked out at our December meeting! The Library Team would like to wish everyone all the best of the season. Happy Quilting!*

## Membership

As of the November meetings we have 215 members. There will be no membership table available during December's potluck. Anyone that has requested a membership list may pick them up when we re-open in the new year.

## BIB n' TUCKER QUILTING

### December Specials

**All Christmas prints**

**All batiks (includes wide width)**

**25% off 35% off 2m or more  
(same bolt) ½ m minimum cuts**

**Precut ½ m pieces \$5.00**

**Buy 6 get 1 free**

343 Bay Street (at Turner) Victoria BC  
(Lower Rear GRAVEL YARD parking lot)  
386-6512 (Mon- Thurs 10-4, Sat 12-4)

**Flare Fabrics**  
BATIKS AND BOLD COTTONS

[www.flarefabrics.ca](http://www.flarefabrics.ca)

timeless treasure, robert kaufman, benartex  
princess mirah, galaxy, hoffman, avlyn, riley blake  
red rooster, fabrics that care, flannels, batiks, bolds  
jelly rolls, layer cakes, fat quarters  
patterns, kits

**Free shipping  
in Canada!**



## November Raffle Winners

Mystery fabric: Leslie Millward and N.L.

Raffles: Sue Artuso, Lillian Dalton, Penny Whittaker, Chris Mousseau, Christine Hustins, J.R., A.L., Barbara Waine, C. T., J.K., Vicki Dods, Kathy Peters, Heather Henderson, Valerie Wilson, Patty McRory, Penelope Woodwork.

Door Prize: Betty Beck and Marsha Whitmee

Show and Share: Linda Campbell, Penny Whittaker and Judy McLaughlin

Block of the Month: Diane Ross

Raffle donations were received (with many thanks) from Cindy Scraba of Cindy's Threadworks Sue Creba, M.L., Pat Ryan, and N.L.

## Quilt Bee January 29 9 am - 4 pm

Our Quilt Bee is on January 29, 2011 at Oliver Woods Community Centre from 9 am - 4 pm.

If you are unable to attend that day, you can still make a quilt for Haven House.

We will have a potluck lunch on that day. Please bring your favorite dish to share. This is a great day for new members of the guild to meet other members and have lots of fun. If you have any questions please call Dianne Ross 585-4965 or Mickey Lemmon 741-0589

## Blog Spotting

There is a big WWW world out there and it is always fun and exciting to find Blogs that we like to check daily or weekly to see what others are quilting around the globe. This wonderful way to fuel our quilting joy is something that I would like to pass on by sharing sites that I have come across by surfing the net.

Here are two that are full of incredible images, colour, texture and tales of creativity.

The first is [www.pamhollanddesigns.typepad.com](http://www.pamhollanddesigns.typepad.com) Pam Holland is a delightful lady that I have met on a few occasions and she has an incredible personal story to go along with her amazing quilting career. There are lots of extras on this site and a whole evening or several evenings could be spent exploring her accomplishments. She blogs and creates every day when possible. This is important as it is very disappointing to Blog followers when there are no new postings for days, weeks or months on end.

The next is [www.patsythompsondesigns.com/blog](http://www.patsythompsondesigns.com/blog) Another gem as there are many photos to engage the reader with appliqué and machine embroidery (her specialty). If you have any quilting blogs that you faithfully follow or have found to inspire, please email me at [lorie.rogers@gmail.com](mailto:lorie.rogers@gmail.com) so that we can include them in the Blog Spotting segment of our Guild Newsletter. McDonalds has a fun seasonal site that allows you to make snowflakes-no two alike-by stamping your virtual coffee mug on a piece of paper. Try it at [mccafesnowflakes.brmethod.com](http://mccafesnowflakes.brmethod.com) Happy Surfing! Lorie Rogers



## Huckleberry's Fabrics Inc.

1930 Ryan Road East

Comox, BC, V9M4C9

250-339-4059

1-877339-4059 Toll Free

e-mail :

[sewfun@telus.net](mailto:sewfun@telus.net)

## Bernina Feet 25% off



till December 23, 2010  
Great Specials on Bernina  
Sewing Machines too.

Merry Christmas &  
Happy New Year  
from all of us at  
Huckleberry's





## Minutes of November 17, 2010 General Meeting

Meeting called to order at 1:00 pm by Norma Franks. 108 members present.

The October minutes were accepted as distributed in the newsletter.

**Treasurer's Report:** Main bank balance is \$22,640.39. The Quilt Show account has \$15,033.38. Total: \$37,673.77.

**Correspondence:** A thank you letter was received from Travellers Lodge for the quilt donated by Coreen Zerr. A 'Thinking of You' card was sent to Bonnie Beil, and one will be sent to Liz Simonson.

**Comfort Quilt Society AGM:** Patty McRory called the annual general meeting of the CQS to order. The minutes of the previous meeting were accepted and the current roster of the executive was introduced. Elections were held: Patty McRory will continue as President. Vice-President Pat Clements stepped down, and Sandy Dobson was elected Vice-President by acclamation. Lori Skerget will stay as secretary, and Nancy Price-Munn as treasurer. The treasurer noted that the raffle proceeds this year were \$5818.02, and presented a cheque for one third of that amount (\$1922.00) to Guild treasurer Linda Totzke. This money represents the act of purchase of quilted articles made by guild members and distributed to agencies or needy individuals in Nanaimo. Our donations are always far in excess of this sum (more than \$15,000.00 since the last

AGM). The meeting was then adjourned.

### Committee Reports:

**Membership:** Membership lists are available for those who ordered them.

**Challenge:** Annelies again reminded those present of the two challenges available and encouraged participation.

**Christmas Potluck:** see page one.

**Coffee:** members are reminded that the kitchen is off limits to the general membership except for the coffee committee.

**Donation Quilts:** Leslie Robinson reminded members to pick up labels for their donation quilts. Those who wish to credit the Guild for privately donated quilts please have the recipient fill out the receipt form, available from Donation Quilts, the CQS executive, and in November's newsletter.

**Program:** There are places available in the upcoming spring workshops. You can sign up in January for the February mini demos. See the Program report of November's guest Heather McArthur from Quilter's Connection magazine.

**Old Business:** The Guild is unable to respond to the request received to teach quilting. Norma will convey our regrets.

### New Business:

1. Members are urged to fill out the CQA survey.
2. We have had a request for quilts to honour newly adopted children as part of their adoption ceremony. About 15 are needed. The response was immediate and a list was signed. The contact person is Sheila Struthers, adoption social worker. Tel. # 250-741-5764. Call her if you are interested.
3. Retreat Registration: The membership debated whether to leave the registration for the retreat as is (sign up at retreat and wait list) or go to a lottery plus wait list. Please see the articles on page 5 and 6 for further discussion. A written ballot will be held at the January meeting.

Following Show and Share and raffles, the meeting was adjourned.

INSPIRING FABRICS • PATTERNS & BOOKS • NOTIONS & GIFTS



Creative Quilting for All Life's Phases

Open Daily!  
1689 Government Street at Fisgard  
Phone: (250) 383-4023  
www.satin-moon.com  
shop@satin-moon.com

Great Quilt Market finds  
for your stocking

Ready made items at the  
Designer Craft Bazaar  
December 5 -12

Glorious Gift Certificates  
Worldwide Shipping!



Vanc Island Connection  
TO  
Superior Threads  
23 Thread Lines/750+ Colors!

www.CindysThreadworks.com

Cindy Scraba  
Certified Threadologist

cindysthreadworks@telus.net  
1-(250)-738-0560  
Qualicum Beach, BC



## Homewood Retreat ~ Background on the Current System

In response to the rather contentious issue of the retreat registration, we thought some words from our perspective were warranted. We (Sue Artuso and Bonnie Dimitry) started the retreats in February 2006 as a fun program event. The first one had 24 guild members and 9 non-members - it was quite a chore getting the 30 minimum required. As an incentive and reward, we announced that they would have first dibs at the following retreat; this decision was met with vehement opposition and we relented. For the next several retreats the "first come, first served" method was used. It was less than successful as would-be participants vied for their favourite bedroom and sewing space. Their attendance was assured as we never had more than 33, even with non-members to flesh out our numbers. No one was really happy with this arrangement, especially Sue and I, so we asked how the other retreat groups handled their registration. The answer was unanimous, they all sign up for subsequent retreats at the end of the current one (even guilds larger than ours do it this way). This is how the registration has been handled for the past three years. There is a core group of gals who have faithfully attended most retreats making it possible for this event to continue. They bring a level of experience, logistical support and camaraderie that has been essential to the retreat's success. New participants are welcomed and seem to fit in well among the "old-hands", and yes, there have always been first-timers at every retreat.

Registration is now well organized and efficient with requests for room up-grades and changes in sewing spaces accommodated whenever possible. Sue and I have a very vested interest in the success of the retreat - we started it, we brought it to the guild and it's our baby. Our greatest fear is that the lottery system would leave one essential member of a group behind, causing the others to cancel. This may take us back to square one - not getting the minimum participants to say nothing of the logistical nightmare it would create, ending with cancellation of annual retreats. This is what happened for the February retreats, which had to be cancelled because poor membership support made it impossible to get the required numbers. We have been actively recruiting for our replacements and were planning on handing over the reins in 2012. The registration for the November 2011 was completed and, with input from the members present at the October executive meeting, the management of the waitlist was decided. At a minimum, we request the 2011 retreat continue as already established and have the membership vote on maintaining the status quo or adopting a new registration system at the AGM in May or at the June picnic when most members are available. Whatever system of registration is chosen can then be implemented with new organizers in 2012. *Submitted for your consideration by Bonnie Dimitry and Sue Artuso*

## A Lottery Draw Proposal for the Homewood Retreat

As a result of a decision by the guild (at November meeting) to hold a vote at an upcoming meeting regarding the method of filling spaces for the Homewood retreat, this proposal is put forward. Please feel free to make positive suggestions and/or forward questions to Patty McRory regarding this proposal.

The principle of the lottery draw for Homewood is that it would provide equal access by all members. Although in the early days of the retreat it was difficult to ensure that all the spaces were filled, this is not the case now as more members show interest in attending (in all likelihood due to two factors -

1. The incredibly good job done by the organizers over the years and
2. The earlier sign-up for retreat -therefore more members can make plans in enough time to attend.)

The practice of first sign-ups to members who attended the last retreat was originally meant to ensure that all available spaces would be filled. Now that the norm seems to be having a wait list, the need to give incentives to fill the spaces is no longer a necessity. The guild has never endorsed a seniority method of filling spaces for workshops, etc. In order to provide equal opportunity to attend the retreat to all members the following method is suggested. Please note that this is a proposal. If the proposal is accepted by the members through a vote at a meeting, the final details could be worked out. *contd. page 6*



**Snip & Stitch**  
**SEWING CENTRE**  
Discover the world of sewing!  
"Wander through our store  
for a refreshing experience"

You're Invited To...

**Winter Warm Open House**  
Fri. Jan. 7 9am-9pm  
Sat. Jan. 8 9am-5pm  
Sun. Jan. 9 11am-5pm



**Boxing Week Sale**  
4 Days Only!  
Dec. 27-31



Closed Dec. 25, 26. Closed early Dec. 24, 31

Snip & Stitch Sewing Centre Ltd. is located at:  
#1-4047 Norwell Dr., Nanaimo BC, V9T 1Y6.  
Phone us at 250-756-2176 or 1-800-789-1730  
www.snipandstitch.com



## Lottery Draw Proposal for Homewood Retreat (continued)

Suggested Method:

Guild members attending Homewood retreat (year 1) would fill out the application for year 2 and attach a post-dated cheque at Homewood and hand it in at Homewood.

All other members who would like to attend the year 2 retreat would fill out the application and attach a post-dated cheque and hand it in at the next Guild meeting or before a deadline date which is within two weeks after the Guild meeting.

On the deadline date, if there are more applications than there are available spaces for Homewood, all applications would be placed in a large container, mixed well and drawn out one at a time. Members' names would be recorded in the order they are drawn until all spaces are filled for year 2. Any remaining applications would also be drawn and the members' names would form the wait list in the order they are drawn.

Over the course of the coming year, members who were "in" may drop out for various reasons. As they drop out, their spaces would be offered to the wait list members in order. There would be a date set after which if a wait list person could not attend in year 2 (due to too short notice), they would remain on the wait list for year 3. Any members still on the wait list (therefore not attending the year 2 retreat) would have

first right to attend in year 3.

Note: the organizers of the event would be excluded from the above process as they would automatically attend (maximum: 2).

The retreat application could have on it a request for specific accommodation and a request for sewing space. The simplest method would be to initially allot rooms and sewing space as the names were drawn. There could be a meeting between the afternoon and evening meeting in April (?) to complete the allocation process.

The lottery could be done using single member's names or people could sign up in pairs (to ensure that every attendee has at least one buddy to attend with).

This process may sound cumbersome but it would provide equal access to all members in good standing. It would likely have some wrinkles that would need to be ironed out.

*Prepared by Patty McRory [pamcrory@shaw.ca](mailto:pamcrory@shaw.ca)*



**When all that life has to offer  
are scraps, make a quilt.**

## SERGE & SEW



250-390-3602



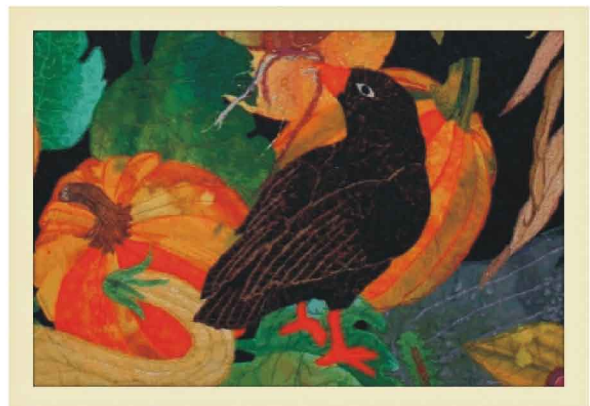
105 Nored Plaza, 6750 Island Hwy., Nanaimo

Featuring fabulous Quilting fabrics,  
Books, Patterns & Notions  
Authorized PFAFF & Babylock dealer:  
servicing & repairs to most  
sewing machines & sergers.

Check our website  
[www.sergesew.com](http://www.sergesew.com)  
for EVENTS & SALES!

## Harvest Quilt Studio

Long Arm Quilt Services



Carol Bailey  
by Appointment Only  
NANAIMO (250) 244-3655  
[www.harvestquilts.com](http://www.harvestquilts.com)



## January Block of the Month

Congratulations to Diane Ross who won 15 blocks in November. The inspiration for this month's block, Fire and Ice, was the chill of a snow storm paired with the warmth of our homes at the heart. Unfinished block is 12 1/2" square.

**Fabric Choices:** The main colours this month are icy blues. Choose two medium (A & B) and two light (C & D) cool blues and a medium pink. Hope the letters help in black and white.

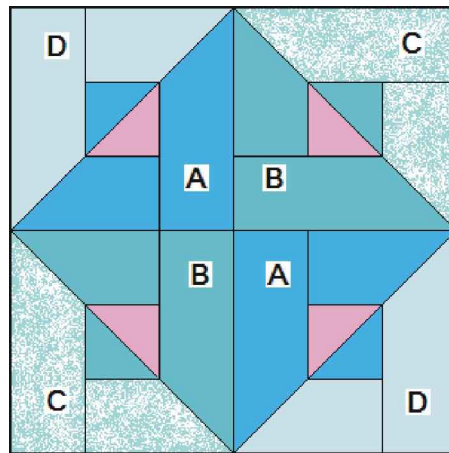
**Cutting:** The cutting instructions for this block are precise. If you chose to allow a fudge factor, the units will require trimming.

### Cutting:

- Pink: 2: 2 7/8" x 2 7/8"  
 Med Blue (A & B)  
 Each: 1: 2 1/2" x 11 3/4"  
 1: 2 1/2" x 7 1/4"  
 1: 2 7/8" x 2 7/8"  
 Lt Blue (C & D)  
 Each: 1: 2 1/2" x 11 3/4"  
 1: 2 1/2" x 7 1/4"

Cut the four squares (2 pink and 1 each A & B) on the diagonal to form 8 triangles. With 7 1/4" long strips right side up place a mark on the top edge 4 7/8" from left end and a 2nd mark on bottom edge 2 3/8" from left end. (See sketch).

Draw a line to connect the marks and cut to form a 45° angle. Each piece will have a square end and a 45° end.

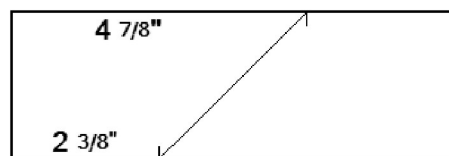


Layout for Fire and Ice

Repeat with the 11 1/4" strips marking 4 3/8" on the top edge and 6 7/8" on the bottom edge both from the left end. (This line will point the other way.)

### Construction:

Arrange the pieces according to the layout. To assemble, place a pink triangle right side up on your sewing surface with square corner in the upper right. Now, using the shorter medium blue strips, with right sides together, align the square corner of the shorter (2 3/8") side of one of the strips with the square corner of the pink triangle. Sew



Sketch

the strip to the triangle along the 2 3/8" edge using a 1/4" seam. Press away from pink triangles. If your cutting has been accurate, the diagonal edge of the unit should be continuous. If not, trim excess off diagonal end of strip. Then sew the matching longer medium blue strips to the other side of the unit. Align the square end of the shorter side (4 3/8") of the strip with the square corner of the unit. Sew along the 4 3/8" edge of the strip. Press away from pink triangles. Trim if necessary. Repeat these instructions using the light blue strips and the medium blue triangles. Be sure to pair the same medium triangles with the same set of light strips. Press towards the blue triangles.

Next assemble the four quadrants of the block by joining the same light units to the same medium units. Nest the seams of a medium triangle of the light unit inside the seams of the pink triangles of the matching medium units. Align the points on either end of the diagonal and sew a light unit to a medium unit along the diagonal. Be sure to match the medium triangle in the light unit to the strip in the medium unit. Press one seam towards the pink and the other away. Square and trim to 6 1/2" if necessary. Assemble the four quadrants to finish the block placing each medium/light set in opposite corners.

If you have any questions or problems, please call me at 250-758-1185. Wishing you joy, Val Ansell and Sandra Radley

## Christmas Gift Bags

Thank you everyone, we received 65 gift bags at our November meetings! We could still use about 25 more. Please bring them to the Christmas potluck. Bags should be a minimum of 8" by 11", marked male or female on the outside. Suggested items (check the dollar stores):

**For Either:** bar soap or body wash, toothbrushes, toothpaste, mouthwash, washcloths, nailclippers, socks, gloves, scarves, toques, small notebooks, pens, pencils, felt pens, wallets, gum, breath mints, candy, chocolate bars, stainless steel water bottles, bus passes, coupons or gift certificates for Tim Horton's, Subway, MacDonald's, A&W, movies, gift cards for grocery stores, etc.

**Boys:** hacky sacks, playing cards, deodorant, ear phones for walkmans, disposable razors, shaving cream, after shave

**Girls:** hair supplies, tampons or panty liners, makeup, nail polish, chapstick or lip gloss, perfume, bath things, costume jewelry, deodorant, skin care cream, body lotion, emery boards, disposable razors, shave cream, mirror, journals, small sewing kits

The gift bags are for young people under 19 at Nanaimo Youth Services Association.

Any questions? Call Sue Creba 250-753-3371 or suecreba@aquariusd.com



Editor suecreba@aquariusd.com



**NANAIMO QUILTERS GUILD SCHEDULE for 2010-2011**

<u>DATE</u>	<u>AGENDA</u>	<u>PROGRAM</u>
Dec. 6	Executive meeting	Country Grocer 82-12 <sup>th</sup> Street 1:30 p.m.
Dec. 8	<b>Guild Christmas Pot Luck 6-9 pm</b>	Christmas Pot Luck at Brechin United Church Doors open 5:30
Jan. 10	Executive meeting	Country Grocer 82-12 <sup>th</sup> Street 1:30 p.m.
Jan. 19	Guild Meeting	<b><u>Buckingham Stencils</u></b>
Jan. 29	<b>QUILT BEE, Oliver Woods</b>	Mickey Lemmon 741-0589 Dianne Ross 585-4965
Feb. 12	<b>WORKSHOP 9-4</b>	Reversible Quilt as You Go: Penny Whittaker at Oliver Woods
Feb. 14	Executive meeting	Country Grocer 82-12 <sup>th</sup> Street 1:30 p.m.
Feb. 16	Guild Meeting	<b>Mini Demos:</b> see page 2 in this newsletter, sign up in January
March 5	<b>WORKSHOP 9-4</b>	Stack & Whack Kaleidoscope: Sandra Radley at Oliver Woods
March 14	Executive meeting	Country Grocer 82-12 <sup>th</sup> Street 1:30 p.m.
March 16	Guild Meeting	Slide Show: Pippa Moore
April 9	<b>WORKSHOP 9-4</b>	Super Portfolio: Sue Creba & Tracy Irwin at Oliver Woods
April 11	Executive meeting	Country Grocer 82-12 <sup>th</sup> Street 1:30 p.m.
April 20	Guild Meeting	Nominations, Trunk Show by Ionne McCauley
May 9	Executive meeting	Country Grocer 82-12 <sup>th</sup> Street 1:30 p.m.
May 14&15	<b>WORKSHOP 9-4</b>	African Collage: Pippa Moore at Oliver Woods
May 18	Guild Meeting <b>EVENING ONLY</b>	Elections and business meeting, no program
June 4	<b>WORKSHOP 9-4</b>	Strip Piecing Made Easy: Coreen Zerr at Oliver Woods
June 5	<b>WORKSHOP 9-4 at Oliver Woods</b>	Easy Curved Piecing & Thread Embellishments: Coreen Zerr
June 13	Executive meeting	Country Grocer 82-12 <sup>th</sup> Street 1:30 p.m.
June 15	<b>Year End Picnic: Bowen Park</b>	Potluck dinner and fun starting at 4 pm.
June 25	<b>WORKSHOP 9-4 at Oliver Woods</b>	Paint and Play with Coreen (Fabric Painting): Coreen Zerr



***Confidence is the feeling you have before you fully understand the quilt you've just finished.***

***Nothing brings joy into this world like a quilt.***



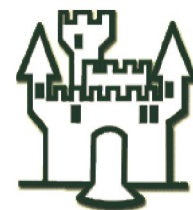
**All Christmas fabric: 35% off (1 m min cut)**

December pre-inventory sale: specially marked fabric \$7.50 (.5m min cut) All pre-cut fat 1/4's still only \$2.99

120-425 Stanford Ave. E., Parksville (250) 248-8449  
[www.grammasquiltingcupboard.com](http://www.grammasquiltingcupboard.com)

**THE CLOTH CASTLE**

786 Goldstream Avenue  
Victoria BC V9B 2X6  
Tel: (250) 478-2112  
Fax: (250) 478-1050



**Your One Stop Sewing Shop**

*Dress & Specialty Fabrics, Drapery & Upholstery Fabrics, Quilt Fabrics,  
Sewing Machines & Sergers Sales & Service  
Classes and Sew Much More.*

Website: [www.clothcastle.com](http://www.clothcastle.com) Email: [theclothcastle@hotmail.com](mailto:theclothcastle@hotmail.com)