



*Newsletter deadline Sept 22, 2011  
for next issue.*

Volume 28 – Issue 1 – September 2011

### **Membership/ Hospitality**

Please stop at the hospitality table when you arrive, sign in, and pick up your ticket for the name tag draw. You must be wearing your name tag in order to win draw. Please sign out if you leave before the end of the meeting.

### **Yummy Baking!!**

Thank you to everyone who brings baking for our meetings. For Sept. it is the turn of everyone with a surname beginning with A or B.

### **Things to Remember:**

- Name tag
- Your own Cup
- Completed membership form and Fees
- Change for Raffles
- Block of the month
- Baking or store bought goodies if your surname starts with A or B

### **Editor**

A big thank you to Sue Creba for all her help, and for the patience of those to whom I vented, while learning how to use Microsoft Word. As a novice, I ask patience for any errors or omissions. Just let me know and I will correct it in next months issue.

***It is not in my mandate to send out group emails other than one informing members that the newsletter is ready on Website.***

## **From Our Presidents' Pen**

Let's get the year going with a super Garage Sale during the October guild meetings! Have a read about it here in this newsletter, and gather your treasures for the sale. It's sure to be a lot of fun!

Once again, we are having a mini-demo meeting in February. If you would like to share your love of quilting and would consider being a presenter, please contact Leslie Millward at 250-390-9077 (bmillward@shaw.ca) or Pat Ryan at 250-7560662 (pat-ryan@shaw.ca). It involves you showing us something for two thirty- minute Welcome back to another year of Guild. The summer was a little slow to start with but perhaps everyone completed their UFO's (?) on the off days. It is so lovely to be part of a group who share a love of quilts, of quilting, of sharing quilts and of giving quilts away.

Sherry Drebnicki and I are your new Co-Presidents with Sherry conducting the afternoon meetings and myself the evening meetings. We did not exactly plan this, not having understudied our roles as Vice-Presidents last year. Mistakes may be made but we are confident you, our fellow members, will be supportive. Two very capable ladies are 1st and 2nd Vice-Presidents, Caroll Rumo coming from Program and Lillian Charron, our Show Chair, both of whom are very concerned that the Guild continue. DRUM ROLL, PLEASE.....Please, please everyone don't be shy, just jump in as an understudy to the Executive and Committee head positions so that we can achieve a smooth transition. I cannot impress on everyone the importance of this Judith McLaughlin and Sherry Drebnicki, Co-Presidents

### **Program Committee**

Another exciting year of workshops and guild meeting activities has been planned. Be sure to check out the guild schedule and workshop sign-up sheets in this newsletter.

Registrations for this year's workshops will begin at the September meeting. To save time, you can print and fill out the registration form (in this newsletter) ahead of time. Make cheques payable to the Nanaimo Quilters Guild. You may also register by e-mailing Linda Campbell (trelin@shaw.ca) and mail your cheque to her at 3230 Lauren Mary Place, Nanaimo, B.C. V9T 5R5. You will be guaranteed a space in class when payment is received. If you pay for a workshop and later find you must cancel, we do our best to refund your fee if the class is full. We cannot guarantee a refund if the class does not fill. If we have to cancel a class, you will be refunded your fee. Refunds would be available at the guild meeting following the workshop.

## Placemat Committee

Your new Placemat Committee needs you!

In order to maintain our non-profit society status, our guild is required to donate quilted items to various organizations in our community every year. A dollar value is applied to every donation, and a reporting procedure has been established.

We ask every guild member to make at least two placemats every year, or more if you like. Placemats should be 12" x 18" finished. We can provide batting and backings if required, available at the placemat table during our meetings.

The honour system has worked in the past, and we are sure will also work in the future. We won't record your name when picking up some supplies.

We need many placemats for the Christmas season! Please bring

### NEVER BEEN USED:

Janome Memory Craft 350E

Embroidery Machine

- PC transfer kit
- Inspira Stabilizer 3 pack
- Bobbin Thread, needles
- 256 USB stick
- 3 brand new embroidery books

ASKING: \$1,250.00 OBO

Editor sandrahreno@yahoo.ca

your finished items to the October and November meetings for a timely distribution to the charities we support.

Placemats are a great way to use up those fabric scraps you have been saving, and you will definitely make the recipients of your gift very happy! Thank you in advance!

Your new (afternoon) Placemat Committee

Ingrid Morton

Merle Armour

## Donation Quilts

Hello everyone, from a slow to get going, but still pleasant summer. I don't know about you but I haven't minded the not-so-hot days. It's easier to get important things like quilting done when the weather is not scorching hot! I've never seen so many birds in my garden or the lawn stay green so long into the summer, so I'm not complaining.

As the new Donation Quilt Committee chair I wanted to start the year off with a little information for guild members.

The first bit of news is that we have been given several boxes of fabric from a generous local resident who is not sewing anymore. Some of these fabric pieces are large enough to use as quilt backings so we will keep these to be used in donation quilts. We should have a good selection at the Donation Quilt table so come and see if there is something you can use for your charity quilts.

The remainder of the fabrics will be brought to the September meeting where we hope you will browse through them and help yourselves to the pieces you like. Feel free to take as much as you feel you can use.

Secondly, I wanted to send a reminder of the quilt sizes and values as they are used for the purposes of record-keeping and reporting to the Comfort Quilt group. It's important for the guild that donated quilts are recorded by size and value.

A baby sized quilt would be either 36" x 36" for a newborn or a crib size of 45" x 45". These are valued at \$80.00.

A lap quilt would measure approximately 45" x 60". This has a value of \$100.00.

A twin quilt, measuring about 63" x 87", is valued at \$150.00.

A double quilt, 78" x 87", is valued at \$200.00.

A queen size quilt, measuring about 84" x 92" has a value of \$250.00 for record keeping purposes.

And that's all I have for now. Your Donation Quilt Committee for this year consists of me, Christine Hustins, as chair, along with the following ladies graciously volunteering their time: Linda Robinson, who is not new to the committee and whose experience we are very appreciative of; Debbie van Otterloo, Nancy Lutes and Anna Bonnell. Nancy and Anna will be attending evening meetings while Linda, Debbie and I will attend afternoon meetings. We look forward to working with you all and getting to know you better over the coming year.

Christine Hustins.

**PILLOWCASE PROJECT UPDATE**

*Pattern on page 6*

Who can believe that we are getting close to Christmas and time to have all our new pillowcases completed and either filled or ready to fill?? Where has the time gone? With our on again and off again summer you may have had time to do some sewing. I will be accepting any donations towards the pillows at the next few meetings. I have purchased 50 of the 100 needed to fill the need. Thanks to all our members that are participating in this worthwhile project. Any questions?? Call or email me at [lorie.rogers@gmail.com](mailto:lorie.rogers@gmail.com) or 250-729-9966

**GARAGE SALE UPDATE**

Save the Date! On October 19<sup>th</sup>, 2011 the Guild Garage Sale will take place and we hope by now you are gathering all the goods that you are willing to part with to sell at this much anticipated event. At the September 2011 meeting there will be a sign-up sheet to request a free sales table and ask that you be available to sell at both the day and evening meeting. We hope to start the evening event a little earlier to accommodate those who have transportation concerns. Sellers

should have a well-appointed money float and some bags but we are requesting buyers bring their own reusable bags and boxes to transport their purchases. There will be no pre-sales and time of sales will be in the October newsletter. We also ask that all items left over at the end of the evening meeting be removed from the hall by the table owners. It was a very exciting action packed event the last time it was held and we can only believe that it will create a stir once again! Any questions? Email or call Lorie Rogers, Laura Morrissey, Kathy Bush, Coreen Zerr, or Val Ursulak and we can help you with your concerns....Get ready to SHOP!



**Coreen Zerr**  
Quilt Designer  
and Instructor

3648 Glen Oaks Drive      Phone: 250-756-1683  
Nanaimo, BC V9T 5L3      Cell: 250-619-7060

**Corsew Designs**  
*All class information is on the website.*  
*Please email or call to register.*

[www.coreenzerr.com](http://www.coreenzerr.com)      

e-mail:  
[corsew@shaw.ca](mailto:corsew@shaw.ca)



**Cindy's Threadworks**  
On-Line Thread Candy Shoppe

Vanc Island Connection  
TO  
**Superior Threads**  
23 Thread Lines/750+ Colors!

[www.CindysThreadworks.com](http://www.CindysThreadworks.com)

**Cindy Scraba**  
Certified Threadologist

[cindysthreadworks@telus.net](mailto:cindysthreadworks@telus.net)  
1-(250)-738-0560  
Qualicum Beach, BC

Editor [sandrahreno@yahoo.ca](mailto:sandrahreno@yahoo.ca)



**Flare Fabrics**  
BATIKS AND BOLD COTTONS

[www.flarefabrics.ca](http://www.flarefabrics.ca)

timeless treasure, robert kaufman, benartex  
princess mirah, galaxy, hoffman, avlyn, riley blake  
red rooster, fabrics that care, flannels, batiks, bolds  
jelly rolls, layer cakes, fat quarters  
patterns, kits

  
**Free shipping  
in Canada!**

JO

NQG

**JOB VACANCY -  
CHALLENGE QUILTS**

Annelies Massey is unable for personal reasons to continue with Challenge Quilts this year and has asked for a replacement volunteer. This is a fun project. Following is a description of the job:

Each year the Guild holds a Challenge quilt contest. The theme varies yearly. Challenge kits may contain: contest rules, due date, and featured fabrics. Rules are printed in the Guild Newsletter. Challenge entries are due at the April meeting, and voted on at the May meeting by members. Prizes and ribbons are usually awarded at the May meeting. During the year of our Quilt Show, the Challenge quilts are displayed at the show. Quilters of every experience level are encouraged to participate.

Judi McLaughlin

**Library New's**

A warm welcome to returning and new members. Hope you have found some time to do some quilting over the summer months & to read all those library materials that were checked out in May and are now due at the September meeting. One of the advantages of belonging to the Guild is that it gives members access to 100s of quilting resources. We try to keep up with the newest books and magazines that are in the marketplace. We are sure you will find thousands of projects and Ideas for which ever project you decide to make. Materials are checked

“Discover the world of sewing!”  
“Wander through our store for a refreshing experience”

Your One Stop Quilting and Sewing Machine Store on Vancouver Island!

Clip & Save Coupon! Come in From September 1-30 Save 10% off Your Class Registrations (Excludes Guest Instructors)

Clip & Save Coupon! Come in From September 1 - December 31, 2011 Save 30% off Any One Book - Any Brand

Hours: Sun. 12-4, Mon-Thurs. & Sat. 9:30-5:30, Fri. 9:30-9  
Closed Holidays and Sundays in July & August

#1-4047 Norwell Drive  
Nanaimo, B.C. V9T 1Y6  
1.250.756.2176  
1.800.789.1730  
Email: info@snipandstitch.com  
www.snipandstitch.com

Husqvarna JANOME

out on a Monthly basis. Please have your membership # ready when you are ready to check out. If you are unable to return the materials at the next meeting, “phone a friend” and get them to return them for you so you won’t be subject to overdue charges.

It can be very hectic in the Library especially at the beginning of the meetings with so many returns. Our Girls will be working non-stop to get things carded and ready. For this reason, we ask that you wait until coffee time to choose and check out new material. The Exception to this is for Executive members who are very busy at coffee time. They are welcome to come and grab some items before the meeting. Let us know who you are so you don’t get chased out.

We welcome any help, so if you are able to spare some time please leave your name, email & phone# with us & we’ll get you trained.

Suggestions for new magazines and books are always welcomed. We have recently added an excellent but expensive magazine “Studio’s to our list. An updated list of books will be added to our website by the September meeting. They will be listed alphabetically by Title and Author. Thank you to all our members past, present and future.

The Library Team

## Food Bank

Here we are again starting another guild year. For those members who participate in donating to the Loaves and Fishes Food Bank through our guild I want to thank you in advance. It seems that each year the need becomes greater and according to the T.V. advertisements 25% are now children.

This is strictly a voluntary participation as I know some of you give through your churches, other organizations you belong to and at the check-out of your grocery store. Any food item(s), toiletries or cleaning products you wish to donate are very acceptable and much appreciated. For those members who like me to suggest some products I think for the month of September when the children are going back to school, anything that can be included in a lunch kit would be most suitable, e.g. The small individual boxes of raisins, any dried fruit, the tuna and cracker packages, jars of peanut butter, jars of jelly or jam.

Norma Franks

## Quilt Shows coming up:

Northwest Quilting Expo,  
September 22-24, Expo Centre,  
Portland, Oregon. Call for entries for  
juried quilt show: Laura 503-624-  
7440 [www.northquiltingexpo.com](http://www.northquiltingexpo.com)  
"Galaxy of Quilts , Chilliwack  
Quilters' Guild, October 22  
Des Moines, Iowa Quilt Show,  
September 28 - November 1

## BLOGSPOTTING

Summer is coming to a close and our thoughts turn to evenings spent sewing in front of a fire and possibly viewing the latest movie on our HDTV's.

There is a new DVD released in April 2011 that we can add to our "must see" list. "STITCHED" is a documentary by Director Jena Morena

[jena@picturesmithproductions.com](mailto:jena@picturesmithproductions.com). She follows three amazing quilters-Caryl Bryer Fallert, Hollis Chatelain and Randall Cook. (Hollis has been Randall's mentor. ) This 72 minute film shows the journey to finish quilts that were entered into the 2010 International Quilt Festival in Houston. A bonus feature are two songs by our local songstress Cathy Miller, the Singing Quilter, titled "You Might Just Be A Quilter" and "12 Step Plan For Quilters".

Controversy ensues each artist creates award winning quilts that were painted, all stitched by machine or showed nudity. It will be of particular interest to anyone who has taken classes by these artists or attended the show. The DVD can be purchased through this website- <http://www.stitchedfilm.com/dvd/>. For a teaser portion of the movie go to YouTube and search for "Stiched, the film" and enjoy.

## TOO MANY MACHINES

Babylock Quilters Professional \$800

Husqvarna Designer 2, with many feet  
\$1200

Open to offers: 250-213-1818 or

Email: [jkaras17@yahoo.com](mailto:jkaras17@yahoo.com)

### Pillow Case Burrito Style

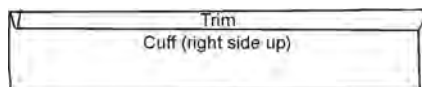


Diagram 1

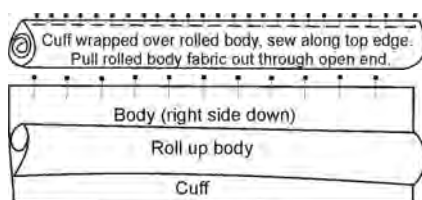


Diagram 2

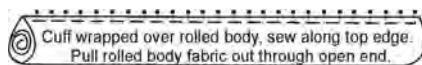


Diagram 3

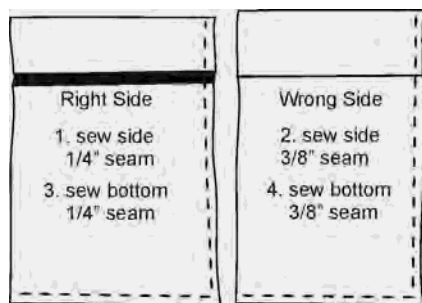


Diagram 4

This method eliminates all raw edges, it may sound confusing but if you take it one step at a time you can't go wrong. You will need:

1/3 yd of Fabric for cuff

2" Strip of Fabric for the trim (optional)

3/4 of a yard of fabric for Body

1. Cut selvedge off all pieces and press center bolt crease out if needed.
2. Lay out cuff fabric Rt. Side up
3. Fold and press trim piece right side out, in half, to one inch by width of fabric, lining up raw edges of fabric.  
( see diagram 1)
4. Place body fabric right side down onto trim and cuff, lining up the raw edges at the top
5. Pin every 3"
6. Roll Body tightly up toward pins, leaving cuff flat.  
( see diagram 2 )
7. Bring lower edge of cuff up to pinned edge enclosing the rolled body; add more pins in between those already placed.  
( diagram 3)
8. Sew all layers using a 1/4" seam allowance and turn right side out through the open ends. Press turn toward the Cuff
9. French seam the side seams using a 1/4" seam allowance with the pillow case Rt. Side out, and a 3/8" allowance with its Rt. Sides tog.
10. Repeat French Seam on Bottom edge  
( see diagram 4)

# Harvest Quilt Studio

Long Arm Quilt Services



Carol Bailey

by Appointment Only

NANAIMO (250) 244-3655

www.harvestquilts.com

ATTENTION, GOOD NEWS!

## CAMBIE ART SUPPLIER

[WWW.CAMBIEARTSUPPLIER.COM](http://WWW.CAMBIEARTSUPPLIER.COM)

Do you need inspiration for your creative pursuits?  
Just a CLICK away, KITS for needlework and sewing, PATTERNS includes home decor, garments, bags, table runners, wall-hangings and more!

Tools, notions, fabric cuts, fibers... NEW products weekly and workshops on their way!  
Drop by cambieartsupplier.com for details.

Are you in the lower mainland? lucky you!  
Contacts us for local pick-up.

We are now ONLINE



Keep an eye on the continuing evolution of Cambie Art Supplier On Twitter: @CArtSupplier



Largest selection of Batiks on the island.

State of the art long arm quilting you'll want to see our resident 'dream machine' in action.

Inspiration galore with hundreds of beautiful quilting cottons.

Staff that will make you feel right at home.

### Kismet Quilts

5334 Argyle St.  
Port Alberni, B.C.  
250 723 6605

[www.kismetquilts.com](http://www.kismetquilts.com)

open 10am - 5pm mon through sat



## SERGE & SEW

250-390-3602

105 Nored Plaza, 6750 Island Hwy., Nanaimo

### SEPTEMBER SPECIALS

- PFAFF Expression 2.0 with free Go Baby™
- PFAFF Expression 4.0 with free Tool Box
- Baby Lock Symphony with \$100 gift Certificate

Check our website [www.sergesew.com](http://www.sergesew.com)

for EVENTS & SALES!

Authorized PFAFF & Baby Lock dealer

Servicing & repairs to most sewing machines & sergers.

Monday - Friday 10 - 5:30 Sat 10 - 5 Sundays closed



**Huckleberry's  
Fabrics Inc.**

1930 Ryan Road East  
Comox, BC, V9M-4C9  
250-339-4059  
1-877-339-4059 Toll Free  
e-mail :  
[sewfun@telus.net](mailto:sewfun@telus.net)

**Fall is full of Fun at  
Huckleberry's**



**This Fall  
Bernina is  
Introducing  
the New 5  
Series**



**September brings Huckleberry's Annual  
Outdoor Quilt Show, Bernina 5 Series Demo,  
New Fall Classes. Contact us for more info.**

**BIB n' TUCKER QUILTING**

**September Sale**

**All bolted fabric including**

**2011 Christmas fabrics**

**25% off 35% off 2m or more**

**Additional discounts on 2m or more of  
older bolts**

**1/2 m minimum cuts**

343 Bay Street (at Turner) Victoria, BC  
(Lower Rear GRAVEL YARD parking lot)  
386-6512 (Mon- Thurs 10-4, Sat 12-4)

**Congratulations and Best Wishes to our 2011-2012 Executive and Committee members.**

We hope you enjoy a fun-filled year and meet many new friends as you serve our Guild. Please keep this information for your reference.

Co-Presidents: Judith McLaughlin and Sherry Drebnicki

1<sup>st</sup> Vice Pres: Caroll Rumo

2<sup>nd</sup> Vice Pres: Lillian Charron

Co Treasurer: Lise Skalos and EV: Bonnie Dormuth

Co Secretaries: Nancy Price-Munn and Buelah Friesen, EV: Val Ansell

Past President: Norma Franks

Block of the Month: Lorna Craig and EV: Val Ansell and Sandra Radley

Challenge: Annelies Massey

Christmas Pot Luck: Janet Knecht and Arlene Ackerman, more required

Coffee: Scrappy Bags: L Bentsen, N. Lindstrom, S Creba, J Pennington, T Irwin, A. Trout and EV: Barbara Kerfoot, Laura Beswick

Donation Quilts: Christine Hustins, Linda Robinson, Debbie van Otterloo and EV: Anna Bonnell and Nancy Lutes

Food Bank: Norma Franks

Historians: Greta Simmons and Marsha Whitmee

Hospitality: Gwyn Oaten and Lorna Craig  
EV: Barb Peters and Julie Garland

June Picnic 2012: Empty – Cancel if necessary

Library: Linda Addison and Bonnie Palfy and others – names unknown

Membership: Ginette Schewe, Yvonne Jans, Help for Sept. and Oct. Val Ursulak, Lorna Craig, Sue Vohanka EV: Moiré Porter, Barb Kerfoot, Sept/Oct. Heather Henderson, Angela MacKenzie

Newsletter: Sandra Hreno (may require assistance for mailing)

Newsletter Adver.: Carole Dorward

Nominating Comm.: Norma Franks

Phoning Comm: Maddie Gibeau, Liz Simonson, Gerrie Green, Janet Knecht, Heather Henderson – more names would be helpful

Placemats: Ingrid Morton, Merle Armour and Ev. Heather Henderson

Program: Leslie Millward, Pat Ryan, Dianne Busch, Robin Barker, Linda Campbell, Irene Madsen, Janet Knecht, Barbara Waive,  
Angels: Angela McKenzie, Audrey Hale, Greta Simmons, Barb Root, Sandra Hreno, Irene Madsen, Lorna Craig

Publicity: Leslie MacDonald, Lynda Kalbfleisch

Quilt Bee: Sheila Lake, Lynda Kalbfleisch, Carole Phinney, Sandra Backer

Raffles: Dianne Miller, Heather Robertson and EV: Penelope Woodwark and Marlene Jones

Retreats: Patty McRory and Barbara Waive

Trips: Empty

Web Master Liaison: Sue Creba

**Program Committee**

<b>Date</b>	<b>Agenda</b>	<b>Program</b>	<b>Notes</b>	<b>Presenter or Instructor</b>
<b>SEPTEMBER-DECEMBER 2011</b>				
September 21	Full Business Meeting	No Program		
October 19	Short Business Meeting Full Program	Garage Sale		
October 29 (Saturday)	<b>WORKSHOP</b>		"Paintstiks"	Val Ursulak
November 5&6 (Sat. & Sun)	<b>WORKSHOP</b>		"All Around the Colour Wheel"	Ionna McCauley
November 16	Full Business Meeting Short Program	Quick Christmas Ideas, Gadgets and Gismos		Bev Serge and Sew
December 3 (Saturday)	<b>WORKSHOP</b>		"Buckingham Stencils"	David and Leslie Haynes
December 14	Christmas Pot Luck	No Program		
<b>JANUARY-JUNE 2012</b>				
January 18	Full Business Meeting Short Program	Trunk Show		Lori Mudrie
February 15	Short Business Meeting Full Program	Mini Demos		
February 25 (Saturday)	<b>WORKSHOP</b>		"MOLAS"	Val Ursulak
March 11 (Sunday)	<b>WORKSHOP</b>		"Circle The Wagons"	Kathy Klassen
March 21	Full Business Meeting Short Program	"Thread Therapy"		Cindy Scraba
<b>Date</b>	<b>Agenda</b>	<b>Program</b>	<b>Notes</b>	<b>Presenter or Instructor</b>
March 24 & 25 (Sat. & Sun.)	<b>WORKSHOP</b>		"A Touch of the Orient"	Susan McGregor
April 14 (Saturday)	<b>WORKSHOP</b>		"Sheers and Overlays"	Daphne Greig
April 18	Nominations Short Program	EQ 7		Donna Morton Snip and Stitch
May 5 & 6 (Sat. & Sun.)	<b>WORKSHOP</b>		"Take a Leaf"	Judy Farrow
May 16	<b>EVENING MEETING ONLY</b> Elections and business	No Program		
June 20	Wind Up Picnic	No Program		

<b>Date</b>	<b>Agenda</b>	<b>Program</b>	<b>Notes</b>	<b>Presenter or Instructor</b>
<b>SEPTEMBER-DECEMBER 2011</b>				
September 21	Full Business Meeting	No Program		
October 19	Short Business Meeting Full Program	Garage Sale		
October 29 (Saturday)	<b>WORKSHOP</b>		"Paintstiks"	Val Ursulak
November 5&6 (Sat. & Sun)	<b>WORKSHOP</b>		"All Around the Colour Wheel"	Ionna McCauley
November 16	Full Business Meeting Short Program	Quick Christmas Ideas, Gadgets and Gismos		Bev Serge and Sew
December 3 (Saturday)	<b>WORKSHOP</b>		"Buckingham Stencils"	David and Leslie Haynes
December 14	Christmas Pot Luck	No Program		
<b>JANUARY-JUNE 2012</b>				
January 18	Full Business Meeting Short Program	Trunk Show		Lori Mudrie
February 15	Short Business Meeting Full Program	Mini Demos		
February 25 (Saturday)	<b>WORKSHOP</b>		"MOLAS"	Val Ursulak
March 11 (Sunday)	<b>WORKSHOP</b>		"Circle The Wagons"	Kathy Klassen
March 21	Full Business Meeting Short Program	"Thread Therapy"		Cindy Scraba
<b>Date</b>	<b>Agenda</b>	<b>Program</b>	<b>Notes</b>	<b>Presenter or Instructor</b>
March 24 & 25 (Sat. & Sun.)	<b>WORKSHOP</b>		"A Touch of the Orient"	Susan McGregor
April 14 (Saturday)	<b>WORKSHOP</b>		"Sheers and Overlays"	Daphne Greig
April 18	Nominations Short Program	EQ 7		Donna Morton Snip and Stitch
May 5 & 6 (Sat. & Sun.)	<b>WORKSHOP</b>		"Take a Leaf"	Judy Farrow
May 16	<b>EVENING MEETING ONLY</b> Elections and business	No Program		
June 20	Wind Up Picnic	No Program		

**NQG PC WORKSHOP REGISTRATION FORM**

Please print your name and circle the dates of the workshops you wish to take.

Name: \_\_\_\_\_ Membership Number: \_\_\_\_\_ Phone: \_\_\_\_\_

Email: \_\_\_\_\_

WORKSHOP TITLE	DATE	TIME	VENUE	FEE	PAID
<b>Paintstiks</b> (1 day workshop) Instructor: Val Ursulak All Levels no website	Sat Oct 29	9:00am To 4:00pm	Oliver Woods Community Centre	\$35.00 Kit Fee: \$15	Cash Cheque MC/V
<b>All Around the Colour Wheel</b> (2 day workshop) Instructor: Ionne McCauley All Levels www.ionnequilts.com	Sat. Nov 5 & Sun. Nov. 6	9:00am To 4:00pm	Oliver Woods Community Centre	\$70.00	Cash Cheque MC/V
<b>Buckingham Stencils</b> (1 day workshop) Instructors: Leslie and David Haynes All Levels www.buckinghamstencils.com	Sat Dec 3	9:00am To 4:00pm	Oliver Woods Community Centre	\$35.00 Kit Fee: \$25	Cash Cheque MC/V
<b>MOLAS</b> (1 day workshop) Instructor: Val Ursulak All Levels no website	Sat Feb 25	9:00am To 4:00pm	Oliver Woods Community Centre	\$35.00	Cash Cheque MC/V
<b>Circle the Wagons</b> (1 day workshop) Instructor: Kathy Klassen All Levels www.kathrynquilts.com	Sun Mar 11	9:00am To 4:00pm	Oliver Woods Community Centre	\$35.00	Cash Cheque MC/V
<b>Touch of the Orient</b> (2 day workshop) Instructor: Susan McGregor Intermediate no website	Sat Mar 24 Sun Mar 25	9:00am To 4:00pm	Oliver Woods Community Centre	\$70.00	Cash Cheque MC/V
<b>Sheers and Overlays</b> (1 day workshop) Instructor: Daphne Greig All Levels www.daphnegreig.com	Sat Apr 14	9:00am To 4:00pm	Oliver Woods Community Centre	\$35.00	Cash Cheque MC/V
<b>Take A Leaf</b> (2 day workshop) Instructor: Judy Farrow All Levels no website	Sat May 5 Sun May 6	9:00am To 4:00pm	Oliver Woods Community Centre	\$70.00 Kit Fee: \$10 or a Fat 1/4	Cash Cheque MC/V

Number of Classes: \_\_\_\_\_ Total Paid: \_\_\_\_\_ Receipt # \_\_\_\_\_

Circle method of payment: Cash / Cheque / Master Card / Visa

- Make cheques payable to: **Nanaimo Quilters Guild**
- Register at meetings or e-mail: **Linda Campbell's** email is **trelin@shaw.ca**
- Mail cheques to: **Linda Campbell, 3230 Lauren Mary Place, Nanaimo BC, V9T 5R5**

**Sixth Annual Christmas Sale**

This year we will be holding our Sixth Annual Christmas Sale at St Stephen's United Church in Qualicum Beach on Saturday, Nov. 26th from 10 a.m. to 3:00 p.m. Each person/group that signs up for a table or tables will also sign up for a job so that we can share the work. Cost for tables will be \$40 and your space will be dictated by the number of tables that you rent. Sign-up will be during the break at the September and October meetings at the "Quilt Day" table. There will be a guild boutique for members with 10 items or less and forms will be available at the October and November meetings. If you are interested in signing up for a table or have questions about our Christmas Sale, please call Gerrie Green at 248-2144 or e-mail her [huckphin@shaw.ca](mailto:huckphin@shaw.ca)

**Homewood Retreat November 2012**

The Homewood retreat for 2012 is tentatively scheduled for November 12-16. The retreat will be run in a similar manner to previous years with the exception of registration. Early registration will take place from September to December 2011. The two-page application is attached to the newsletter and can be completed and brought to the Sept, Oct or Nov guild meeting. Applications will also be received at the retreat in November if someone volunteers to collect them. Applications can also be mailed or delivered to Patty McRory or Barb Waine at home. All registrations must be accompanied by a post-dated cheque (December 1, 2012). Early registration ends on December 1, 2012. If at that time there are more members who have completed a registration form than there are spaces available, a lottery will occur to determine attendees. Members will be informed ASAP as to their status in regard to the retreat. If there are any members who do not get "in" during the initial lottery, they will be placed on the wait list and informed if/when spaces become available. There are usually at least 10 members from the wait list who get to attend the retreat. Please note that rooms and sewing spaces will also be determined by lottery so the more information you provide on the registration form about your wishes, the more likely we will be able to meet your needs. It is hoped that costs will be about the same as this year. If you have questions, please contact Patty McRory at [pamcrory@shaw.ca](mailto:pamcrory@shaw.ca). I will be away during the fall guild meetings but will attempt to catch up on email as frequently as I can.

**Guild Website: If you have something of interest for our Guild web site, such as photos, please send it to Sue Creba [suecreba@aquariusd.com](mailto:suecreba@aquariusd.com)**

The following motion was presented at our May meeting re absentee voting.

Since this motion would change our By-Laws, 30 day notice to members is required (which was given by publishing the motion in the June newsletter). Discussion and voting on this motion will occur in September. A 75% majority is required to pass this motion as per our By-Laws. Moved by Marg Bradley and seconded by Avril Valentine that the Guild accept the following Special Resolution and add it to our By-Laws

Whereas, Nanaimo Quilters' Guild members insist that the Guild stay current with the times;

Whereas, due to many members having the means and wherewithal to travel throughout the year;

Whereas each member in good standing is entitled to one vote;

Whereas, the Guild By-Laws, Section 4, Voting, ii) states "Voting by proxy is not permitted", where proxy votes allow an absent member to designate another member to vote for them;

Therefore, be it resolved that Section 4, Voting, iii) be added to state that 'On a secret ballot, an absentee vote be permitted, said ballot to be published in the newsletter and the ballot to be returned via email or mail, with member name and membership number attached, to a designated appointee within a specific time frame, where an absentee is defined as a member who is unable to attend the meeting.

Nanaimo Quilters' Homewood Retreat Registration Form (please fill in both pages)

Retreat dates: November 12-16, 2012

Name \_\_\_\_\_ Phone # \_\_\_\_\_ Guild # \_\_\_\_\_

Address \_\_\_\_\_

Email address \_\_\_\_\_

A \$50.00 deposit cheque is required to secure your place at the retreat. Please post –date this cheque to December 1, 2011. If on Dec.1, 2011 there are more members with applications completed than there are available spaces at Homewood, a lottery will take place and each applicant will be informed ASAP as to whether she is “in” or on the wait list. Any applicants not “in” will have their cheques returned in December. For those members who are “in”, the deposit is non-refundable unless a replacement can be found and/or we have met the minimum number required. The balance of payment is due at the October 2012 guild meeting.

Buddy (person you wish to be signed up with; please confirm with your buddy that you agree to be buddied before applying) - \_\_\_\_\_ or N/A \_\_\_\_\_

Please fill in the following two sections with numbers indicating your first choice (1), second choice (2) etc. This will allow the committee to allocate rooms and sewing space in the best way possible.

Accommodation	Choice (#)	Sewing Space	Choice (#)
Single	\$		
2 people sharing (no private bathroom)		Dining room	
2 people sharing (private bathroom)	\$	Dining room loft	
3 people sharing		Fireplace room	
3 people sharing (private bathroom)	\$		
4 people sharing		Fireplace mezzanine	
5 people sharing			
No preference		No preference	

\$ Please note that any single accommodation or accommodation with private bathroom will have an extra surcharge

Food allergies/requirements? No or Yes If yes- what are they?

\_\_\_\_\_

Any other concerns (e.g. mobility) \_\_\_\_\_

If you wish to be in a shared sleeping arrangement with several people (e.g. cabin or Y2K house), please list their names here so that we can accommodate you if possible. Also provide any extra detail about your wishes here so we can best serve every applicant:

Please note that we will make every effort to accommodate everyone in the best possible way. The more information you provide about your preferences, the easier it will be to accommodate you.

For Committee Only:

Deposit Paid \$50 – Yes – Initials \_\_\_\_\_ Balance Due \$ \_\_\_\_\_ Initials \_\_\_\_\_

Balance Paid \$ \_\_\_\_\_ Date \_\_\_\_\_ Initials \_\_\_\_\_

Retreat dates are from 3 p.m. Monday Nov 12 to 1:30 p.m. on Friday November 16, 2012.

Retreat Balance Paid for \_\_\_\_\_ Amount - \$ \_\_\_\_\_

Cheque \_\_\_\_\_ Cash \_\_\_\_\_ Retreat Committee Member's Initials \_\_\_\_\_

Retreat dates are from 3 p.m. Monday Nov 12 to 1:30 p.m. on Friday November 16, 2012.

Retreat Deposit Paid for \_\_\_\_\_ Amount- \$50

Cheque \_\_\_\_\_ Balance due by Wednesday October 16, 2012

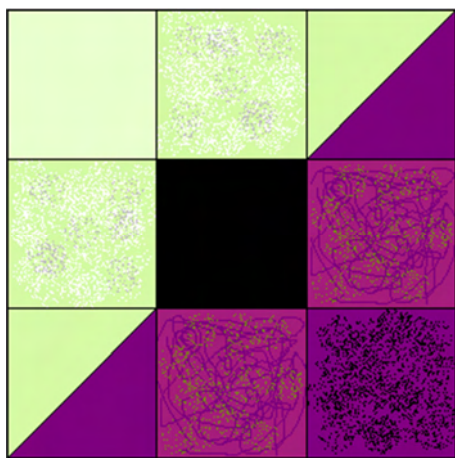
Retreat Committee Member's Initials \_\_\_\_\_

## October Block of the Month

Thanks to everyone who made the June blocks and congratulations to last month's winner, Judy McLaughlin. Remember, this year we're including colour theory along with the block instructions. We will use, with permission, some of the ideas presented in Ionne McCauley and Sharon Pederson's book Colour for the Terrified Quilter. (Ionne will be giving a colour theory class in November.) This month we will do a complementary or two-colour scheme using colours opposite each other on the colour wheel. If you are new to colour theory, read the notes on last month's block for further explanation of the colour wheel and how to select a pleasing range of colours from your stash. This month's block is called Shaded 9-Patch, repeated from Jan 2009. Remember, accuracy in cutting and piecing is important. All seams are  $\frac{1}{4}$ " unfinished

### Fabric Choices

Decide on your favourite colour, or the colour you have most of in your fabric stash. Feel free to choose any one of the 12 standard colour families of the colour wheel. The example is done in red-purple and yellow-green. Select five medium and dark fabrics from your colourway. Now consult a colour wheel for the complementary colour, For example, orange is complementary to blue and red to green - there are a total of



### **Shaded 9-Patch Block**

six possible combinations with one colour from the cool side and one from the dark. Select five of your lightest fabrics from this second colour. For the centre patch use a solid black. Note: tone-on-tone and fine prints will work best here. If you use a two-toned print, keep to the two complementary colours.

### Cutting:

Darks: 3:  $4\frac{1}{2}$ " x  $4\frac{1}{2}$ "

1:  $4\frac{7}{8}$ " x  $4\frac{7}{8}$ "

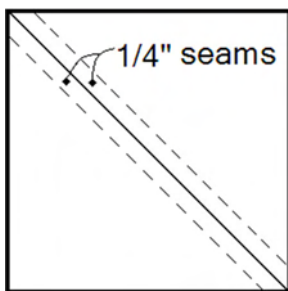
Lights: 3:  $4\frac{1}{2}$ " x  $4\frac{1}{2}$ "

1:  $4\frac{7}{8}$ " x  $4\frac{7}{8}$ "

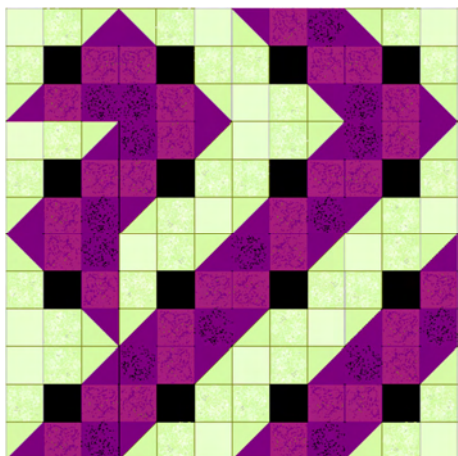
Black: 1:  $4\frac{1}{2}$ " x  $4\frac{1}{2}$ "

**Construction:**

First make the two half-square triangles for the opposite corners. Use the two  $4\frac{7}{8}$ " x  $4\frac{7}{8}$ " squares (1 dark 1 light) for this. Place the light square *wrong* side up and draw a pencil line from corner to corner. Place this square on the dark square, wrong sides together with light fabric on top. Using the diagonal line as a guide, sew a  $\frac{1}{4}$ " seam on either side of the pencil line (*See sketch below*). Cut on the diagonal line and press the seams to the dark.



Now lay out the nine patches on your table, using the sketch of the block as a guide. For those of you using the black and white print version, the upper left half of the block is light and the lower right is dark. The Black patch is the centre of the block. Sew the block together row by row. Press the centre row in (to the black) and the top and bottom rows out (to the ends). Now nest the seams together and sew the three rows together with the 'black row' in the middle. Press.

**Sample Quilt Layout**

If you have any questions, suggestions or problems, please call me at 250-758-1185. Wishing you joy, Val Ansell and Sandra Radley



# The Cloth Castle

Your One-Stop Sewing Shop

Victoria's Exclusive Husqvarna Viking and Singer Dealer

[www.clothcastle.com](http://www.clothcastle.com)

786 Goldstream Ave., Victoria, BC V9B 2X6 250-478-2112

The Cloth Castle - your exclusive Vancouver Island Handi Quilter headquarters! Studio frames and sit down quilting machines.



## Handi Quilter Studio Frame

Made of high-quality steel, the HQ Studio Frame is a robust, professional-grade table and frame system for your home studio.



## Handi-Quilter Sweet Sixteen Sit Down

If you love to free-motion machine quilt but struggle to fit your project in a small throat space, you're going to love the HQ Sweet Sixteen®. Sixteen inches of throat space gives you room to quilt even a king-size quilt. The smooth surface of the included table allows your project to glide under the needle. The powerful motor handles quilting with ease and stitches up to 1500 stitches-per-minute. Choose your three favourite top speed settings, on the easy-to-use color touch screen and let the machine remember them.

Come in for a demo of either of these great machines!

The Cloth Castle - your one-stop sewing and quilting shop on Vancouver Island.

[www.clothcastle.com](http://www.clothcastle.com)