



Next Meeting

November 19

Brechin United Church
Doors open at 12:30
Meeting starts at 1:00 & 7:00

Next Executive Meeting

November 12 1:30 p.m.

Save On Foods, Woodgrove

Newsletter Deadlines

November 22, December 15

Things to Remember:

- name tag
- coffee/ tea cup
- change for raffles
- library books
- gift bags and placemats
- workshop registrations
- UFO list to hand in
- Show and Share
- donation quilts
- block of the month (for November)
- newsletter
- baking or store bought goodies (if your surname is I, J, K or L)
- fat quarter fabric exchange

Membership

Please stop at the Membership table when you arrive, sign in and pick up your ticket for the name tag draw.

Hospitality

Please also check in with our hostess(es) at the door when you come to meetings.

Yummy Baking ...

Thanks to everyone who brings goodies for our meetings. **For October, it's the turn of everyone with a surname beginning with I, J, K and L.**

Newcomers Welcome Tea

New members tea Monday, November 17 at 1:00 p.m. at Kathy Bush's home.

Comfort Quilt Society

The annual general meeting of the Comfort Quilt Society will be held at the November Nanaimo Quilt Guild meeting.

From Our Presidents' Pens



Autumn has arrived and despite the rain there are those glorious periods of sun that beckon us outside. The trees are glorious with their display of colour that comes only in Fall, and I am inspired to get out my paints to try and capture all those brilliant colours.

A HUGE Thank you to all those who did a demonstration /presentation at the October meeting. Each was well attended and the comments following were positive and excited. I recognize the amount of preparation required putting together these mini classes and I for one was most grateful for your efforts.

I encourage all guild members to take another look at the Guild's Program for this year and perhaps during this review you will decide that you are interested in taking advantage of the most wonderful and exciting teachers slated for classes. Our Guild subsidizes these classes and the minimum number of participants must be reached in order to justify this cost. Having taken a class this summer I am most grateful that our guild can offer classes at a hugely reduced cost that can make these big name teachers available to all.

This past weekend 10 of us spent a day with Val Ursulak playing with Shiva Paint Stiks. What fun and the results were amazing! And then there were the gals that were immersed in the world of Beading with Eileen Neil. These were the first classes held at Oliver Woods Centre and it was a bright and wonderful venue to encourage the creative juices to start flowing.

As we read this newsletter those going on the Houston trip will be home. It will be fun to see their pictures from the quilt show and the many purchases made. But do not despair as we can look forward to the Quadra Retreat the last week of November. For me it is time for power sewing on those Christmas projects and spending time with friends, new and treasured.

Do not forget the Newcomer's Tea that will be held at Kathy Bush's home Nov.17 at 1:00 p.m. This is a wonderful opportunity to meet guild members in a smaller, less intimidating venue and be able to ask questions on what our Guild is about. And there will be tea and goodies! See you there.

If you are participating in the GIFT BAGS they will be collected at the November guild meeting. My family has many blessings and I feel privileged to be able to make and give a small contribution that will bring some joy and happiness to a young person that has little.

The generosity of our guild never fails to amaze me. The number of quilts destined for Houston Hurricane survivors was awesome, and to those who made a quilt, thank you. *Avril and Eimear*

GENTLE REMINDER: Please remember to bring your own coffee cup to each meeting. This saves Gladys and her helpers much work when tidying up following the coffee break.



Christmas Pot Luck

A reminder that our December meeting will be the Christmas Pot Luck on December 10, at Brechin United Church. For details about making Christmas Gift bags and fabric Bingo cards, see page nine.



Program Committee

October's "Basic Instincts" Demos were a great success. A lot of work goes into preparation of these demos and we hope that the membership will continue to take advantage of them. In the past, we have charged for demos, but this year we decided to pay the instructors and have the guild absorb the cost. Cathy, Barb and Lillian would like to thank all the instructors: Sue Artuso (Crazy Quilting), Kathy Bush (Binding and rotary cutting basics), Penny Whittaker (Paper Piecing), Marsha Whitmee (Hand Piecing), Pat Quinlan (Hand Quilting), Lorie Rogers (Guild Challenge – How do I get started?), Laverna Anderson (Machine Appliqué tips), and Val Ursulak (Appliqué Tips). We are very fortunate to have so many guild members willing to share information so others can learn. Please let Cathy and Lillian know what you thought of your sessions, and what would you like to see demo-ed in the future. Please give them your name if

you would be willing to step up and do your part to share your expertise with others at the next session. Our next session will be in February of 2009. There will be a list in January's newsletter. Sign ups will begin at the January Guild Meeting and for an hour or so before the Demos begin at the February meeting. Be sure to sign up for Patty McRory's Thong Demo - an innovative technique you won't want to miss! (more info coming)

Thank you to our October workshop teachers, Val Ursulak (Paint Stiks) and Eileen Neill (Beading and Embellishing) for providing such excellent learning experiences. Both classes were a resounding success. In the Paint Stiks Class, we made many samples using a variety of techniques and tools. Both Beading classes were also successful with each student coming away with a nearly finished project. Our new venue, Oliver Woods Community Centre has lots of light, access to the outdoors, heating thermostats in each room, easy access – the doors open automatically on a flat surface, no stairs, lots of parking. A few guidelines: bring your own cups and utensils to class along with your lunch (there are very few places nearby to purchase lunch). We do have access to a microwave, stove, refrigerator and coffee pots. Coffee, tea and condiments will be provided by the program committee, however, if class participants want to bring "goodies" to share, they are always appreciated. Our classes will now be held from **9 to 3:30**. We ask that you do not arrive before 8:30 as we do not have access to the room before then. This should allow adequate time to set up our machines and other equipment. We also ask that everyone start cleaning up at 3:30 as we have to be completely out of the room at 4 pm. These rooms are booked solid, one right after the other.

Register for workshops at guild meetings, or by emailing Barb Root rootco@shaw.ca then mailing cheque (to Nanaimo Quilters Guild) to Barbara Root, 10930 Sea Vista Road, Ladysmith, B.C. V9G 2A1 Norma Franks has the credit card machine at each meeting to take Visa or MasterCard for payments. Should you have to cancel a class for any reason you must notify Barb ASAP via email or at a guild meeting. You will receive a refund **IF** we are able to fill the class. **Please note: Barbara Root will be away from December 27 until February 6. If you wish to register or cancel any classes during her absence contact Lillian Charron meme150@shaw.ca or Cathy Welte mwelte@shaw.ca**

SASHIKO - Sharon Pederson Saturday November 8 9-4 @ Oliver Woods Centre

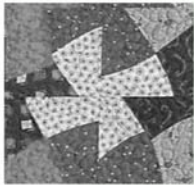
Greta Simmons	Thelma Skeleton
Louise Neveu	Carol Bailey
Shirley Fredrickson	Sandra Longland
Vicky Barkley	Trish Kirk
Audrey Hale	Lillian Charron
Barbara Root	Doreen Richards
Margaret Carmichael	Robin Barker

PORTRAITS - Charlotte Warr Andersen Sat. Feb. 7 & Sun. Feb. 8 2009 9-4 @ Oliver Woods Centre (still room to register)

Eimear Keane	Lorna Craig
Val Ursulak	Sandra Radley
Barbara Root	Bonnie Beil
Laura Morrissey	Lori Mudrie
Kathy Calder	Carole Dorward

The workshop registration form was in September's newsletter, is on our website, and is available at all guild meetings

The Cumberland Quilt Shop



2750 Dunsmuir in historic downtown
Cumberland
(next to Post Office)
Tuesday to Saturday 10am-5pm
Phone 336-2624

*Asian, Westminster, Bali's as
well as traditional
fabrics*

Call for Fall Class Schedule



2008-2009 SCHEDULE ~ WRITE THESE DATES IN YOUR DIARY



DATE	AGENDA	PROGRAM
Nov. 8	WORKSHOP 9-4	“SASHIKO” Sharon Pederson
Nov. 12	Executive meeting	Save-On-Foods 1:30
Nov. 19	Full business, Short Program	“Stitches Show & Sell” Karen Tottman
Nov. 25-28	RETREAT at Quadra	Contact: Bonnie Dimitry 756-3254
Dec. 10	Executive meeting	Save-On-Foods 1:30
Dec. 10	Guild Christmas Pot Luck	See: Norma.Franks, Beulah Friesen, Roberta Shepherd
Jan. 14	Executive meeting	Save-On-Foods 1:30
Jan. 21	Guild: Full business, Short Program	“Knowledge Network” Lillian Charron
Jan. 31 9-4	QUILT BEE, Monarch 1 & 2	Leslie 390-9077 Sandy 758-6149
Feb. 7 & 8	WORKSHOP 9-4	“Portraits” Charlotte Warr Andersen
Feb 11	Executive meeting	Save-On-Foods 1:30
Feb. 18	Guild: Short business, Full program	“HOT TIPS for COOL QUILTERS”
Mar 7 & 8	WORKSHOP 9-4	“ANGLE PLAY” Margaret Miller
Mar 11	Executive meeting	Save-On-Foods 1:30
Mar 18	Guild: Full business Short Program	“PIPPA MOORE TRUNK SHOW”
Apr 4	WORKSHOP 9-4	“NEW FANGLED” Pam Godderiss Dangerfield
Apr 8	Executive meeting	Save-On-Foods 1:30
Apr 15	Guild: Short business, Full Program	“BEST AND WORST GADGETS” Show UFO’s
May 13	Executive meeting	Save-On-Foods 1:30
May 20	Evening meeting	“ELECTIONS” UFO Prizes, Challenge Prizes
May 24	South End	SEWING ROOM TOUR
June 7	WORKSHOP	“African Sunshine” Pippa Moore
June 10	Executive mtg	Save-On-Foods 1:30
June 17	Social	POTLUCK PICNIC

Quilt Challenge 2008

The Quilt Guild meeting in October gave the membership an insight during the 30 minute sessions, on how or what was involved in starting a Challenge Project. The members who attended my sessions were enthusiastic and, I think, saw some new techniques and ideas that they could try. Often, it only takes chatting it out in a group setting to get the creative juices flowing. In preparing for the sessions, I also came across some new websites, Youtube videos and magazine articles. It’s a big world out there and the theme

is Green. Thanks to all those who attended and the positive feedback was much appreciated. A teacher in the USA, who teaches thread painting, sent her class to the Ladies Restroom at the Convention Centre where the class was being held. She had the participants look at the marble tiles and trace out a portion of a pattern to start their thread painting creation. There is inspiration everywhere! Get your sketchbooks out and start learning and creating. *Lorie Rogers*

Upcoming Quilt Shows!

April 23-26, 2009 Island Quilting Seminar, Sequoia Springs Golf Club, 700 Petersen Road, Campbell River. Quilting workshops by great instructors. Campbell River Friendship Quilters Guild. Registration & descriptions: www.crfriendshipquiltguild.com Info: cseley@oberon.ark.com

May 29-31, 2009 Seasons by the Sea, Parksville Community Centre, 132 East Jensen Avenue, Parksville, Admission \$6 or \$10 for 3 days. Parksville Quilt House Quilters Guild. Workshops run June 1-4. Info at www.parksvillequiltthousequilters.com

June 18-20, 2010 Nanaimo Quilters Guild Quilt Show, Beban Park, Nanaimo



Library News

We can't believe that we are stamping our next batch of date due cards with 2009! Where has the year gone?

A reminder that library materials taken out in November will not be due back until next year (2009). There will be no library at our December potluck. Members are encouraged to take lots of materials home.

There are a number of members who have materials checked out that are sadly **way overdue**. You will be hearing from us soon! Please return them before we are forced to publish your names in the next newsletter!!!

Bring an extra bag to hold all those library materials you will be taking out in November. *Linda Addison and the Library Team*

It's Time for Placemats

It's that time again! Placemats are to be handed in at the November meeting for distribution in early December. Last year, we donated 200 placemats and will need that amount this year. All donations will be gratefully received and passed on to Meals On Wheels (Nanaimo & Ladysmith) and The Telephone Visiting Association. We put a tag on each one which tells the recipient that it was made by a Guild member. *Georgia Zieglmeier and Chris Mousseau, Placemat Committee*

Quilt Bee Saturday, January 31, 2009 9 am-4 pm Oliver Woods Community Centre

Our thanks to all those who have signed up to participate. Our teams are now completed. Anyone not signed up can go on a waiting list - just give Leslie or Sandy a call and we will do what we can. If you cannot join us for the bee, and would like to make a quilt for Haven House, we will provide the backing and batting. This is a fun day and we are looking forward to seeing all the beautiful quilts when they

are completed. Remember to bring your favourite dish to share for the POTLUCK lunch that day. The Oliver Woods Centre has lots of parking and the facility is nice and bright. The batting and the backing will be available at the November Guild meeting. Patterns were available at the October meeting and will be available also in November. Happy Quilting! *Leslie Millward and Sandy Dobson*

Getting to Oliver Woods

Workshops are at the new Oliver Woods Centre, located right behind what was the old Rutherford Mall. Turn onto Rutherford Road and drive past the Mall entrance and through the traffic lights. Turn LEFT onto Uplands. Make a RIGHT turn onto Oliver Road which is about two blocks along Uplands. The buildings will be on your LEFT. Please try to carpool if possible to leave room for others.

Harvest Quilt Studio

Long Arm Quilt Services ~ Memorial/Memory Quilts
Mail Order Enquiries Welcome



Carol Bailey
by Appointment Only
NANAIMO (250) 244-3655
www.harvestquilts.com

INSPIRING FABRICS • PATTERNS & BOOKS • NOTIONS & GIFTS



Creative Quilting for All Life's Phases

Open Daily!

1689 Government Street at Fisgard

Phone: (250) 383-4023

www.satin-moon.com

November Specials

All batting, interfacing and stabilizers 20%
kits 10-40%

Fabric Art Diet Guild Show Opening:

Saturday November 1

20% off all art quilting supplies

See us at the Pearkes Christmas Show

November 7-9



Trips and Retreats

By this time, we will be on our way home from a great trip to the Houston International Quiltfest, and no doubt you'll hear all about the wonderful quilts we saw, classes we took, and all the goodies we bought. The next time one of these comes up, think seriously about joining us and signing up early.

The retreat now has 33 gals who have paid their deposit. Sue and I will be collecting the balance of your payment at the November guild meeting. While

you're making a bingo square for the Christmas potluck dinner, make a couple more to bring for games night at retreat. Attached to this newsletter is the retreat information sheet - please print it out so you'll know what to bring and how to get there. Don't forget to bring your deposit cheque for the 2009 retreat (Tuesday, November 10 - Friday, November 13, 2009) as we'll take registrations at the end of the year's retreat. *Sue Artuso 250-716-8701/Bonnie Dimitry 250-756-3254*

GUILT-FREE STASH-BUSTER

Do you have any scraps or what-was-I-thinking fabric that is taking up space in your sewing room? If you'd like to donate fabric to the Edmonton Red Cross quilting group, who have a goal of making 1000 quilts, please bring it along to the November guild meeting. Shipping has been arranged. Info: Kim Falconer, Community Giving Coordinator, Canadian Red Cross - Central & Northern Alberta Toll Free: 1-800-565-4483 kim.falconer@redcross.ca

October Raffle Winners

Mystery Fabric: Pat Quinlan, Betty Hamilton

Raffles: Sandy Dobson, Cheryl Tellier, Mickey Lemmon, Thelma Skelton, Madleine Gibeau, Judy Baun, Audrey Llyod, Heather Robertson, Carol Bailey, Judy Nelson, Judi McLaughlin, Linda Addison, Carolyn Cavanagh, Sue Royal

Show & Share: Bonnie Dimitry, Lillian Charron, Carolyn Cavanagh

Door Prizes: Judy Mirau, Barb Peters

Block of the Month: Val Ansell

Special thanks to Holly Wells, Laverna Anderson and Kathy Bush for their generous donations to our raffle stash. *Gail Lambourne & Margaret Carmichael*

2010 Quilt Show

Our first meeting was held October 16 and we were glad to see representation from most of the committees. There were some great ideas submitted and I am sure that things will come together and we will have another terrific Quilt Show in 2010. It was decided that we would keep the same logo "Material Magic". This will eliminate the costs of a new logo and since our Quilt Show was such a success, we feel that our Guild will be associated with this logo. For the committee members that were unable to attend the meeting, you will receive the minutes of the meeting by email. Our next meeting is Thursday, February 5 at 1:30, at Save On Foods near Woodgrove Centre. *Carol Bailey (250) 244-3655 Lillian Charron (250) 245-8345*

Copyright Information

For additional information regarding the issue of Copyright you may wish to go to the Parksville Guild's October 2008 newsletter, page 12. Their link is on the Home Page of our website.

Stitches

phone: 250.537.8985

creativity@stitchesquiltshop.com

www.stitchesquiltshop.com

127 Rainbow Road Salt Spring Island, BC V8K 2V5

THE
Stitcher's Muse
NEEDLE ART

Fine needleart and lacemaking supplies

- hand-dyed silks and cottons
- charts, books, patterns, kits
- silk ribbon, beads
- quality fabric
- small selection of quilt fabric
- evenweave fabrics

#7 - 70 Church Street, Nanaimo
250-591-MUSE (6873)
www.thestitchersmuse.com
email: info@thestitchersmuse.com

GRAMMA'S
QUILTING CUPBOARD
Fabrics • Patterns • Notions • Classes

Ph: (250) 248-8449
Fax: (250) 248-8451
Marian Whitney

P.O. Box 606
#1-180 Craig Street
Parksville, B.C. V9P 2G7

grammas_quilting_cupboard@shaw.ca
www.grammasquiltingcupboard.com



Minutes of Membership Meeting October 15, 2008

Meeting called to order at 13:02 by Co-President Avril Valentine, 90 members in attendance. She asked us to keep Eimear in our thoughts and prayers as her husband is recovering in Victoria General Hospital's ICU after emergency surgery.

Hospitality: Marg Bradley welcomed Heather Walker and Wynn Hill from Aldergrove, Julie Fall from Ladysmith, and Mary Christianson from Nanaimo.

Correspondence: A sympathy card was sent to Shirley Herritt as her mother-in-law passed away and a thinking of you card was sent to Eimear. Campbell River Friendship Quilters Guild sent us notice of the Island Quilting Seminar they are sponsoring April 23 to 26, 2009.

Treasurer: Funds have been advanced to the Library and the Quilt Show committees. Florence Dorscheid will be filling in while Audrey is in Mexico.

Trips and Retreats: Final info on the Houston trip available. Thanks to those who made quilts for the hurricane victims. Next year's retreat will be Nov.10-13, 2009. Sign up for the 2009 retreat will start at this year's retreat, there are a few spots left.

Quilt Bee: Sandy & Leslie have backing and patterns available for the quilt bee.

Prizes and Raffles: Gail reported that due to the generous support of the Mystery Fabric draw, we are in the wonderful position of having an extra \$250 over the \$500 earmarked for our annual bursary. She proposed the following amendment.

MOTION: Moved by Gail Lambourne and seconded by Sue Artuso that the Nanaimo Quilters Guild shall offer a minimum of one \$500 educational bursary each year to a qualified textile student residing in the Nanaimo-Ladysmith School District 68. If we have funds in the Bursary/Mystery Fabric account in excess of the \$500 and it reaches the amount of \$250 we may offer an additional bursary of \$250. The additional bursary would be determined on a year to year basis. The additional bursary would be distributed in the year following year end. Motion passed unanimously.

UFO Challenge: Members can sign up for this yearly challenge.

2nd Vice-President: Norma is accepting blocks of the month today. She has Kathy Miller CDs (\$10) and Material Magic Quilt Show 2007 CDs (\$2) for sale. She noted that Visa/Mastercard is available at meetings for payment of guild related fees.

Membership: New membership cards and

receipts can be picked up today.

Quilt Show: Lillian announced that the first meeting of the 2010 quilt show committee is October 16th, 6:30 pm at Save on Foods Woodgrove. She asked that one member from each committee attend as space is limited. They still need a volunteer Depot Captain Co-ordinator who collects entry quilts from depot captains and arranges their delivery to Beban Park. Please contact Carol Bailey if available.

Program: Due to limited enrollment the Sharon Pedersen's 2 day Sashiko workshop has been changed with her permission, to a one day workshop on November 8. Lillian reminded us that Program works very hard to provide instructors and unless these workshops are supported they have to be cancelled. By booking and then cancelling, the guild could get a reputation that makes it unattractive for instructors to commit to a teaching date with us.

Website: Avril has submitted photos for a slideshow on the Gallery page of our website.

CQA Reporter: Marg Bradley has agreed to assume this position on behalf of the guild, to report to the CQA area representative on the happenings in our guild for publication in The Canadian Quilter magazine. Many

Bernina Savings

Purchase an artista 730E at Huckleberry's and we will give you a 700D serger.

730E includes the Bernina Stich Regulator & Embroidery

730E Now priced at \$6999.

Also on SALE the Bernina artista 630E

\$6299

plus bring in this ad & receive an additional \$100 off

Only valid on the 630E

(includes embroidery and the BSR –Bernina Stitch Regulator) All prices valid till November 30/08.



Huckleberry's Fabrics Inc.

1930 Ryan Road East
Comox, BC, V9M-4C9

250-339-4059 or 1-877-339-4059 Toll Free

e-mail : sewfun@telus.net



Minutes of October 15 continued

thanks Marg. The business portion of the afternoon meeting concluded.

Evening Meeting of October 15th, 2008

Meeting called to order at 19:00 by evening chairperson Patty McRory, 36 members in attendance.

Norma Franks reported on correspondence. Patty reported on the information from the afternoon meeting.

Quilt Bee: Leslie said that they now have enough teams, batting & backing available.

Placemats: Judith reported batting will be available at the November meeting.

Block of the Month: Patty drew the winner, Val Ansell (6 block entries from the afternoon, none from the evening)

Bursary Motion: Patty read the Motion presented at the afternoon meeting to the membership, and asked for a vote. The motion passed. The business meeting adjourned at 19:27

(Both meetings were followed by two half hour sessions of demos, coffee break, raffle draws and show and share)

Evening minutes submitted by Norma Franks, edited and added to afternoon minutes submitted by Lillian Dalton.

Food Bank Donation

It has been the tradition of the Nanaimo Quilters Guild members to donate non-perishable goods to our Food Bank at every December Pot Luck meeting. Knowing the dire straights that the Food Banks are in, I would like to suggest that we each bring one item of non-perishable food to each meeting. This would be a voluntary participation.

We can discuss this idea at our November meeting but if anyone feels it is a something they would like to do I thought it might be nice if we decided what to bring each month. For example, for the month of November, participating members can bring either one can of soup OR one package of dried potatoes. Bring your thoughts to the November meeting. *Norma Franks, 2nd V.P.*



donations
for the
food bank

Thank you to Sue Creba

Sue, you do an amazing job of our Newsletter each month. From those of us who would not be able to put a newsletter together, no matter how much time we were given, we would like to thank you from the bottom of our wee hearts for taking on this job and doing it so well, month after month. We are in awe of you and your abilities. You go girl!!!!!!!!!!!!!!

Editor's comment: Thank you, I couldn't do it without all you great contributors sending in your items on time every month! Sue

Placemat Patterns

If anyone has a placemat pattern they are willing to share please send me a copy (I will pay the cost of copying). I am also looking for patterns for quilts for wheelchair patients. Has anyone seen any patterns for wheelchair quilts, or has knowledge of where I can look for such patterns? *Barbara Root email: rootco@shaw.ca*



Coreen Zerr
Quilt Designer
and Instructor

3648 Glen Oaks Drive
Nanaimo, BC V9T 5L3

Phone: 250-756-1683
Cell: 250-619-7060

Corsew Designs

**For Classes offered in my home studio,
guilds, and quilt shops check website
or contact me via e-mail**

www.coreenzerr.com

e-mail:

corsew@shaw.ca



SERGE & SEW

www.sergesew.com

250-390-3602

6750 Island Highway N., Nanaimo, BC, V9V 1S3

**Featuring a fabulous selection of
quilting fabrics, books, patterns & notions.**

AUTHORIZED PFAFF DEALER

**Servicing & repairs to most
sewing machines & sergers.**

Sales & Events are announced on our website,
the Bulletin Newspaper and Radio FM 88.5

Come see what we're all about!



December Block of the Month

Since this is both a busy month and a short one for the guild, this month's block will be a simple star with 4-patches at the corners. The large centre square of this block allows you to showcase an interesting Christmas print, a simple 6" block or some appliqué. Obviously, the easiest choice for the centre is the Christmas print. If you would like to be more adventurous, please do. To make the finished blocks more variable, I would like half of you (those with last names starting from A to M) to make the star with red points and the second half (N to Z) to make neutral points. This only means different placement of the half-square triangles that make up the star. The measurements, cutting and sewing are otherwise the same. **Cutting:**

One 6 1/2" square of red Christmas print

Four 3 7/8" squares of dark red
(15 1/2" x 3 7/8" piece)

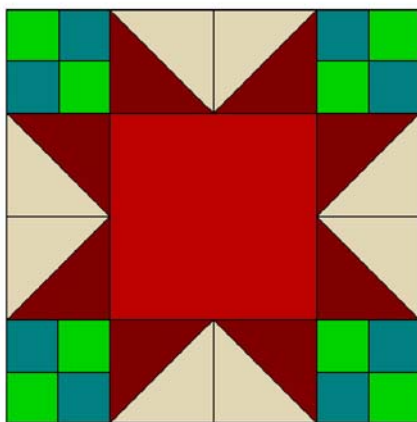
Four 3 7/8" squares of neutral
(15 1/2" x 3 7/8" piece)

One 16 1/2" x 2" strip of dark green

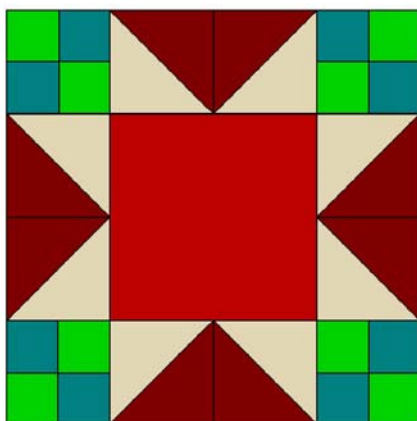
One 16 1/2" x 2" strip of medium green

Make half-square triangles using one 3 7/8" square of neutral and one of dark red. Draw a pencil line diagonally (from corner to corner) on the wrong side of each neutral square. Place a neutral square and a red square right-sides together with marked side of the neutral fabric facing up. Stitch 1/4" away from the pencil line on either side of the line to join the 2 squares along the diagonal. You will now have two parallel lines of stitching running diagonally across the square. Cut along the pencil line and

Surnames A to M



Surnames N to Z



press seam allowance toward the red. Trim to 3 1/2" if necessary. Repeat for the other three red and neutral squares. You should now have 8 half-square triangles, each one half red/ half neutral. These will form the points of the star. Last names A to M will join the half square triangles along the neutral side. N to Z along the red side. This will make 4 star point units. (See sketch) Press seams.

Make the corner 4-patches by joining the two green strips with a 1/4" seam allowance to make one strip set. Press seams to dark. The strip set will measure 3 1/2" x 16 1/2". Cut strip set into eight 2" lengths to make eight 2" x 3 1/2" units. Place one unit on top of a second so that the light green of the top unit lies over the dark green of the bottom unit. This will form a 'checkerboard' effect. Nest the seams, sew and press.

Lay out the pieces according to the sketch with medium green squares in each of the four corners. Start to assemble the block by sewing one of the star point units to one side of the 6 1/2" centre square, base towards the square. Sew a second to the opposite side. Press seams in. Sew the green 4-patches to either end of the remaining two star point units. Keep the lighter green lined up with the base of the star point units on each end. Press seams out. Finish assembling the block and press.

The Thread Catchers (Gail Lambourne, Kathy Bush, Margaret Carmichael, Sandy Dobson, Leslie Millward) would like to extend a huge thank you to the 2007 Material Magic Publicity Committee for their amazing detailed work on their final report and binder that set out such precision and detail of what they did to accomplish their goals. It is a wonderful reference for us and we truly appreciate all your work and detail. Thank you so much to Sasha Koerbler, Sue Creba, Angela McKenzie and Bonnie Dormuth. You have made our duties so much easier! Bless you!



Creative Quilting
102-5869 York Rd.
Duncan, BC V9L 3S3

Darlene Potts
Creativequilting@telus.net
Phone: 250 746 8033
Fax: 1 866 847 8629



Judy Farrow

Textile Adventures

Little Mountain Studio
call or email for class schedule
judyfarrow@shaw.ca
250 954 3797



QUILT GUILD BINGO at Christmas Potluck

Ho, Ho, Ho. How are the bingo cards coming along? Even if you are not planning to attend the Christmas Pot Luck, I am sure that Sandy and Leslie our Quilt Bee Divas will be delighted to accept as many Fabric Bingo cards as you are willing to make. These blocks are so easy, and make up into the most colourful and cheerful quilts for Haven Transition House. If you are not going to be attending the Pot Luck bring you Bingo Blocks to the November meeting and we will have a box for you to put them into. Many thanks for your participation in this annual project.

Game Card Instructions: Materials for 1 (10½ inch) card (Each fabric must be chosen from one of the following categories: batik, floral, geometric, heart, leaf, metallic, holiday, novelty, paisley, plaid, solid, star, stripe or 1930's print. Use a black print for the centre square)

5 (2½ inch) squares assorted yellow and orange prints

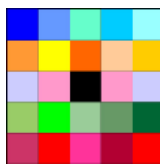
5 (2½ inch) squares assorted green prints

5 (2½ inch) squares assorted red prints

4 (2½ inch) squares assorted pink & purple prints

5 (2½ inch) squares assorted blue prints

1 (2 ½ inch) square of black print



Block Assembly: Note: use 1/4 inch seams.

1. Join 5 yellow/orange print squares to make a row. In the same manner, make 1 red, 1 blue, and 1 green row.
2. Join 2 pink/purple squares. Make 2 pink/purple pairs. Join one pink/purple pair to each side of black square to complete pink/purple row. (This is the centre row of your bingo card)
3. Join rows, placing pink/purple row in centre, to complete 1 Bingo Game Card block.

Instructions have been taken from Fons & Porters Love of Quilting, September 2006, pg 116-117. Permission is granted.

Christmas Gift Bags

Thanks to everyone who is willing to make Christmas gift bags for Nanaimo Youth Services ONE STOP Youth Drop In program for kids. Bags should be a minimum of 8" by 11", marked male or female on the outside. Please bring them to our Nov. 19 meeting. Suggested items:



Boys: AA batteries, calculators, hacky sacks, can of pop, chocolate bars, deodorant, body spray, gloves, hat or toque, mouthwash, yo-yo's, temporary tattoos, ear phones for walkmans, disposable razors, shaving cream

Girls: sewing kits, small first aid kits, hair supplies, tampons/liners, makeup, nailpolish, chapstick, lip gloss, perfume, bath things, costume jewelry, chocolate bars, deodorant, scarves, skin care cream, body lotion, disposable razors, shaving cream, journals

For Both: McDonald's coupons, toothpaste/brush, pens, pencils, felt pens, wallets, candy, gift certificates

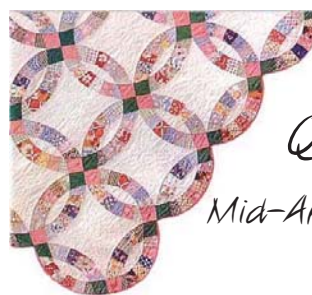
BIB n' TUCKER QUILTING November Specials

**All prints with a leaf
(includes flannels and
batiks)**

**30% off – 35% off 2m or
more(same bolt)
½ m minimum cuts**

We still have some Timtex

343 D Bay Street (Lower Rear GRAVEL YARD parking lot) at Turner 386-6512 (Mon- Thurs 10-4, Sat 12-4)
Closed Fridays for Grandma privileges



*Barbara's
Quilting Studio*

*Mid-Arm Pantograph Quilting
closed Saturday*

Barbara Dickie

phone: 250 758-4048
b_dickie@shaw.ca

p a t c h Susan Purney Mark & Daphne Greig
w o r k s Teachers, Authors, Designers

NEW BOOK!

studio
Simple Stained Glass Quilts

Pre-order your autographed copy.

Available Now: *Digital Essentials and Blending Photos with Fabrics 2*

www.patchworkstudio.com

Email: patchworkstudio@shaw.ca or phone 250-595-4411





American Professional Quilting Systems

Road Show Seminar
Western Canada Tour!

Have you been thinking about getting a Longarm Quilting Machine?
Have you been thinking about trading up from what you have now?
Yes? ...then.....this Sales Seminar is just for you!!
Come join us for an afternoon of information, fun and "hands-on" time with an APQS Millennium and Lenni Longarm Quilting System!

Friday, November 14, 2008

Vancouver Island Conference Center
Nanaimo, BC, Canada
Time: 1 - 4 pm

Saturday, November 15, 2008

Abbotsford, BC, Canada

Contact....Brandi at 1 -800-426-7233 to reserve your spot - come See for Yourself what APQS can do for YOU!

More information: www.nadiawilsondesigns.com

SWEET PEA QUILTING

25 Roberts Street, Ladysmith, B.C. V9G 1A2

Telephone: 250-245-2114

Email: sweetpea.quilting@shaw.ca

Long Arm Machine Quilting

See us for your machine quilting needs. Once you have selected the ideal pattern for your quilt, our computerized system will scale the pattern so that it fits YOUR quilt perfectly.

QUILTING SPECIAL

With a minimum purchase of \$100.00 at Sweet Pea Quilting (excluding quilting services) you will receive a credit of \$25.00 to be used when you bring your next project in to be quilted.

Fine print:

A maximum of two \$25.00 credits may be redeemed for each quilt, \$25.00 credits must be used within one year from the date that they are earned.

We offer a selection of wide batting and backing.

Come see the great Christmas goodies we have in stock... And be sure to get your quilt tops to us as soon as possible to ensure they are complete for Christmas giving!

Kismet Quilts

www.kismetquilts.com

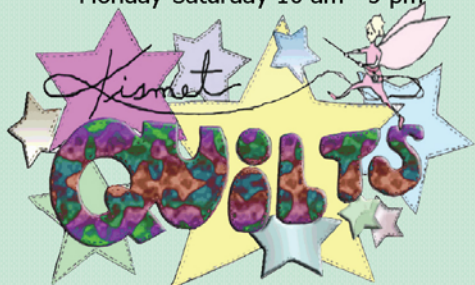
5334 Argyle Street

Port Alberni, BC

V9Y 1T8

250.723.6605

Monday-Saturday 10 am - 5 pm



Long Arm Quilting Services, Fabrics, Notions, Books, Gifts, Large Selection of Wide Goods, Quilting Classes

Winter Magic Open House

Friday Nov. 14 9-9
Saturday Nov. 15 10-6
Sunday Nov. 16 11-5

Don't miss out on all the amazing sales!

Your One Stop Quilting and Sewing
Machine Store on Vancouver Island!

1-4047 Norwell Drive
Nanaimo, BC V9T 1Y6

1.250.756.2176
1.800.789.1730

info@snipandstitch.com
www.snipandstitch.com

Snip & Stitch
SEWING CENTRE
NANAIMO

Camp Homewood Quilting Retreat - Information Sheet

Welcome to the Nanaimo Quilters' Guild retreat at Camp Homewood on Quadra Island. You should know that this is a church camp, not the Best Western, so expect rustic, bunk house style accommodations. The basic rate is \$160/pp which includes 3 nights accommodation, 9 meals, and taxes. A limited number of private rooms with double bed and shared washroom, or shared rooms with private bathrooms are available for an additional cost of \$48. These rooms will be allocated on a first come, first served basis. There are 2 large rooms where we'll be sewing and dining, and once set up you won't have to move anything until we leave. It would be best if you form small groups - to car pool, share a room and common equipment such as rulers, cutting mats, and the like. Just as a word of caution, this lodge, although charming, is old and the rooms can get very smoky. If you suffer from allergies to mould, dust and/or smoke, you will probably be affected by this environment and should reconsider your decision to go on this retreat.

Stuff to Bring:

Bedding - flat sheets (there are single and double beds), pillows and warm blankets or a sleeping bag, a hot water bottle (if you get really cold),

Toiletries, towel, washcloth, soap, and a bathmat (we have some rubber shower mats for the common shower stalls), PJs, slippers and robe so you can sew in your jammies,

A clock and small, bedside lamp (if you want to read in bed) a flashlight and a night light (optional),

A large mug for coffee or tea (the cups at Homewood are very small),

Change of clothes, and undies (dress in layers as you can get very warm once the fireplace is lit),

Foul weather gear and appropriate shoes if you plan on walking,

Sewing machine and all the necessary sewing supplies (the quilt shop on Quadra is closed),

Several projects to work on,

Task lamp, an extension cord and power bar are absolutely necessary,

Ironing boards and irons will be shared - don't bring one unless you are specifically asked to - the small Clover irons and a mini board are not restricted,

Something to make a design wall - low tack tape and batting, etc,

Your guild name tag, and please put your name on all your equipment (all our stuff looks the same),

Snacks - optional (they usually lay out an evening snack and fruit, and coffee, tea and hot chocolate are always available),

Sewing chair if there is room in your vehicle- optional, if not, bring a cushion to sit on,

Something(s) to donate to the silent auction (and cash to spend on it) - the money raised is given to the camp as a thank you gift, a "quilter's bingo card for games night (see Oct 2008 newsletter for pattern), and a \$50 deposit cheque as we'll be taking registrations for the next retreat at the end of this one.

Don't forget your medications, and anything else you really need to make yourself comfortable.

Let us know if you have any dietary concerns - **allergies, diabetic, vegetarian**. We will inform the camp staff and they will try to accommodate your needs, but if these are very restrictive, you may want to bring something from home. Please remember, this is a church camp, so don't bring any alcohol.

Getting There:

Driving north to Campbell River on the #19 Hwy, turn right onto the South Campbell River/Jubilee Parkway exit and drive until you reach Hwy #19A (second light after turning). Turn left, and take the Oceanside route to the city centre. Watch for the signs to the Quadra Ferry. Turn right at the 3rd stop light after turning onto Hwy #19A. The ferry terminal entrance is on the right, about 50 M after turning at the light. The ferry leaves once an hour generally on the half hour and returns on the hour. On Quadra, continue up the main road leaving the ferry. After about ½ KM turn right at the stop sign, onto Heriot Bay Road. Then 200 M up Heriot Bay Rd (just pass the elementary school), turn left onto West Rd. The RCMP detachment will be on the right, immediately after the turn. Travel on West Rd for 4.5 KM and turn left at the large Homewood sign. Continue on the gravel road until you reach the paved road, the lodge is on your left.

Here are some web sites to check out: www.homewood.bc.ca and www.bcferries.com

Please note: We require a \$50 deposit to secure your space. This deposit is non-refundable unless a replacement is found or the retreat is cancelled (we need a minimum of 30 people to go and a maximum of 36). The balance of your payment is due at the guild meeting preceding the specific retreat.