



Next Meeting

January 17, 2007

Brechin United Church

Doors open at 12:30

Meeting starts at 1:00 & 7:00



From Our President's Pen

Happy New Year to everyone. I hope you all had a wonderful Christmas. We certainly started out on the right foot with the pot luck, 85 people in attendance!

Thank you to Bonnie Beil and her kitchen elves for doing a superb job and to everyone that brought food, supper was delicious as always. The pot luck parties are always so much fun. We collected 110 bingo blocks and Val Ansel has kindly offered to sew them up into donation quilts, thank you Val for doing that. And of course the many bags of food for the food bank, quilters are so generous all the time and the community certainly appreciates it.

The guild received a donation of fabric samples from a furniture store which Judy McLaughlin kindly accepted and will be bringing to the January meeting. If anyone is interested you are welcome to take some home and make "cat or dog beds" for SPCA or the better cotton ones can certainly be made into lap tops.

I'm happy to report that the "Cook Books" have sold out. I would like to thank Pat Fraser, Laverna Anderson, Carol McBride, Norma Franks and Linda from Serge & Sew for all their individual contributions to the making and distribution of the cook books. Also to the guild members who kindly took the time at the meetings to sell the books, your help is appreciated and thank you to all involved.

And the new year will bring us closer to the Quilt Show in May. It's very exciting so hope you are all preparing your quilts for showing and ready to lend a helping hand at the show. I wish you the best in health, wealth, and wisdom for the New Year, see you at the January meeting. *Shirley Herritt*

Next Executive Meeting

January 9, 2007 1:30 pm

Save On Foods, Woodgrove

Next Quilt Show Meetings

Wed. Jan. 3, Feb. 7 7:00 pm

3137 Barons Road

Newsletter Deadlines

January 24

April 25

February 21

May 23

March 21

August 22

Things to Remember:

name tag

coffee/ tea cup

change for coffee & raffles

library books

program & retreat registration forms

donation quilts/placemats

show and share

block of the month

newsletter

baking or store bought goodies
(if you have been called)

fat quarter fabric exchange

QUILT BEE: Saturday January 27, 2007 Time: 9am to 4pm

Place: Kiwanis Village Auditorium, 1233 Kiwanis Crescent

There is room for another team as we had a cancellation. You may sign up at the January meeting, or call Cathy Welte or Lillian Charron. We also have extra batting and backing if anyone who cannot attend the Quilt Bee wishes to make a quilt.

EACH TEAM TO SUPPLY: Power bar or extension cord, Basic Quilting Supplies, Sewing machine, Thread to match or contrast your quilt top, Mug/glass, dinner plate, dessert plate and cutlery, Potluck dish

THE GUILD SUPPLIES: Tea, Coffee, Juice and a morning snack, Ironing boards, Irons... We ask that you do not bring your own irons (Mini irons are OK), Backing and Batting.

CORRECTIONS: Please make the following corrections on your instruction sheet for "Comfort Coins":

1. you will need 4 strips of coins 2. you will need 3 strips of sashing. All other measurements are correct.

Our goal this year is to make at least 36 Quilts for Haven House. Looking forward to seeing you at the Quilt Bee. If you have any questions, please feel free to call Cathy Welte 245-0771 or Lillian Charron 245-8345.

Meeting Reminders:

- Meetings are open to the general membership at 12:30 and 6:30 pm.
- Only park in handicapped parking if you have a valid card.
- Please bring written reports for the secretary, Buelah Friesen.
- Please let Buelah know if someone is in need of cheering up, and she will send a card.
- Please be mindful of other people's allergies and refrain from wearing scents at the meetings.



Quilt Show News on page 6

Program Committee



Happy New Year to all our members from your program committee.

As most of you have already heard, we had to cancel the November retreat at Camp Homewood because of the treacherous road conditions. The camp management has not charged us for this retreat as the weather is beyond anyone's control. All those who have not yet received their refund cheque, please contact Bonnie at 756-3254. We have plenty of spaces (12 to 15) open for the February retreat and are inviting anyone who wants to come for 3 days of no cleaning or cooking, just sewing and socializing. Please pass this info onto your friends and family members - they are welcome on the retreat from Tuesday to Friday, February 20 to 23 (we would hate to have to cancel this one due to insufficient numbers). As the February guild meeting is after this retreat, we will make arrangements to collect the payment balances personally from everyone going, in early February.

We also have opening at all of the spring workshops; why not consider taking a class and learning a new technique? The cost for each of these workshops is \$35.00. The program portion of the January meeting will feature a trunk show by Judy Farrow. We haven't had a visit from her in quite a while and look forward to seeing what she's been working on during the past couple of years.

Your program committee, *Bonnie Dimitry, Coreen Zerr, Sue Artuso, Cathy Welte, Lillian Charron and Bonnie Dormuth*

Sew'n Sews Fabrics

58C Adams Road

Campbell River, BC V9W 1S1

Ph: 250-923-6065

Fax: 250-923-0399

email: seroberts@oberon.ark.com

**Janome Sewing Machines & Sergers
Fabrics, Patterns Notions**

Owner: Edna Roberts Located in Willow Point



SEW FABULOUS Arlee Stroink

150 Station Street
Duncan, BC V9L 1M7

Husqvarna

**Sewing Machines & Sergers
Sales & Service**

Viking

Phone/Fax: 250-746-8583

Fabric Notions Patterns Books

Toll Free: 1-888-746-8583

Embroidery

Alterations

mail@sewfabulous.ca

www.sewfabulous.ca



The Thread Bear

January is SALE MONTH

You are invited to our Pre-Inventory Sale with prices that will wow you and shock the competition!

Fabulous Savings and Fun for All!

SALE BEGINS DECEMBER 27TH AND ENDS JANUARY 31ST

Sale Items will change each week!

Check under "Events" on our Website for more sale details.

PLEASE NOTE: We will be closed Dec. 24th-26th and Jan. 1st.

We will also be closing early Dec. 31st at 3 pm.

Happy Holidays from The Thread Bear.



Thread Bear

238 Fell Avenue

North Vancouver

604 929 0308

www.threadbear.com

UPPER THREAD BEAR

FABRIC, CLASSES, RETREATS

OPEN SEVEN DAYS A WEEK

9:30—5

LOWER THREAD BEAR

SANDWICHES, TEA, BON TONS, GIFTS

Tues - Sat 10 to 4

Closed All Stat Holidays



Boomer Hats for Babies

Maureen Eykelenbloom (Boomer's Mom) is coming to the afternoon Parksville Guild meeting Monday, January 15 to thank all of those who have been donating hats for babies in Afghanistan in her son's memory. She will be giving a presentation on why and where the hats are going. She is hoping to carry on this project for the next couple of years or until our troops are home again! We invite anyone whose is interested from Nanaimo Guild to come and join us that day.

Parksville Quilt House Quilters Guild is also holding two days of workshops February 24 & 25 at Bradley Centre. Our teacher for this event is Pat Crucil teaching "Curves" from Sechelt, who has won many National awards. There are many other classes offered as well. We invite anyone that is interested to register and join us for these classes. Details regarding the classes can be viewed on our website: www.parksvillequiltthousequilters.com under "Cabin Fever". If you are interested, give me a call.

Coreen Zerr 756-1683

Missing Women's Legacy Quilts of Hope

My sister, Kerry Koski, was one of the missing women you may have heard about in the media. Kerry went missing in January, 1998 and her remains were found at the Pickton farm in 2004. Kerry was just one of many women who died a horrible, violent, and needless death. How could we have prevented this Canadian tragedy? How can we help to make sure it doesn't happen again?

We can put compassion into action and do something to make a difference.

Missing Women's Legacy Society, founded in 2000, provides preventative education in BC communities about drug addiction and provides restorative programs for women. MWLS is about helping women at risk for violence and at the top of that list is addicted women. These women are **the** prime targets for men intent upon violence – they are easy targets and the perpetrators believe that their crimes may go unnoticed.

One of our long-standing programs is the Quilts of Hope Program. Since 2000, Our Legacy Quilters have turned donated materials into beautiful quilts for women and children at risk. MWLS also offers an Art Therapy Program, focused on teaching quilting and appliqué. Many studies have proven that colour can be uplifting and that meditation and relaxation can create positive changes in a stressed individual's physiology and mental states. Colour and relaxed, rhythmic, concentration – that's quilting and appliqué. Women in recovery are involved in serious, life saving learning. Quilting distracts them with colour, creativity, and a peaceful rhythm; allowing them to concentrate on something simple and relaxing while their unconscious minds work on the really tough stuff. For these programs, we need donations of fabric, supplies and equipment for quilting, including old sewing machines in good condition. Cash donations are also needed for the Specialized Support Program, which provides continued support for women leaving centres. MWLS wants all women to have the best chance of recovery. Please contact me at 604-931-1315 or valeriejeanhughes@hotmail.com or 1723 Charland Ave, Coquitlam, BC V3K 3L9. Thank you for your support, Val Hughes

SWEET PEA QUILTING

411 A 1st Avenue, Ladysmith B.C. V9G 1A2

This coupon entitles you to 15% off your next purchase over \$25.00,
on any regular priced item.

TELEPHONE: 250.245.2114

EMAIL: sweetpea.quilting@shaw.ca

www.sweetpeaquilting.com



Coupon must be presented at the time of order
one coupon per customer per order
offer valid September 1 2006 until August 31, 2007
Not valid with any other offer

NOW OPEN
SATIN MOON QUILT SHOP
at 1689 Government St.

NEW PLACE,
SAME SMILING FACES

Parking: next door city parkade
Across the street at Robinson's parking lot

SPECIAL CLUBS:

Satin Moon Strippers, 3 Sisters Mystery BOM,
Around the World Mystery Quilt, Art Quilt
Group, Applique Blocks of the Month:
Rabbits and Welcome to the North Pole

Come in and see our
JANUARY SPECIALS



1689 Government Street
Victoria, B.C. V8W 0A1
(250)383-4023 1-800-345-3811
Quilt Shop www.satin-moon.com



Library News

A BIG THANK YOU to all of our library helpers. For the rest of year, we will be having library ONLY on business meetings. That will be **January, March, April and May**. That will mean that you will be having books for two months at a time, and we all know that it takes that long to do a project out of a book, so that is good news!

In order to run the library more efficiently at the afternoon meetings, books should be RETURNED only before the meeting. Please try to get the books to us before the meeting starts so that we can process them properly before the coffee break. Books can be BORROWED during the coffee break and directly after the meeting.

For the evening meetings, we have fewer people, so I would request that you return your books at 6:30 PM when you come in and then wait until 6:45 PM or the coffee break to sign out your books. Thank you so much for your cooperation. It seems to be very hectic in the library this year. We could use another 1 or 2 library helpers in the evening. If you are interested in helping, please contact Angela at 758-1602 and leave a message or on line you can get me at afriola@shaw.ca

Take-out limits: One (1) book from the 800s, up to eight (8) other books, and up to three (3) bags of magazines.

Due Date: March 21, 2007 As the library will not be open at the Guild's February 28 meeting - a program meeting - you get to keep books and magazines until the March meeting.

Your requests: Please send us your requests for new books to NQGlibrary@shaw.ca Angela, Sasha and helpers.



P.O. Box 606
176 Bagshaw St.
Parkville, B.C.
V9P 2G7

Ph:(250) 248-8449

Fax:(250) 248-8451



Judy Farrow

email or call for my teaching schedule and info
regarding classes at
Little Mountain Studio
250 954 3797
judyfarrow@shaw.ca

Only the Bernina Stitch Regulator frees you to focus on your free-motion design.



Experience the freedom yourself! With the patented Bernina Stitch Regulator (BSR), you'll learn free-motion in minutes. And you don't have to fuss with frames or platforms or foot pedals. With BSR, you simply move the fabric. The revolutionary BSR sensor takes care of everything else, giving you stitches that are gorgeously even and consistent. You're freed up to simply design, create and play. Try it today.

Come into Huckleberry's Fabrics Inc.
For more information

Or visit

www.berninausa.com

Huckleberry's is located at 1930
Ryan Road, Comox, BC V9M 4C9

Contact us at:

Toll Free: 1(877) 339-4059

Locally (250) 339-4059



e-mail: sewfun@telus.net

Editor suecreba@aquariusd.com



December Raffle Winners

Mystery Fabric: Bonnie Dormuth

Raffles: Mary Laanela, Mickey Lemmon, Laura Morrissey, Bonnie Beil, Marcia Miller, Kathy Calder, Barbara Clement, Georgette Sergeant, Paulette Cornish, Gail Lambourne, Lorie Rogers, Doreen Richards, Gladys Dikken, Pam Pady, Shelly Fraser, Lil Kroll

Show & Share: Pat Quinlan

Name Tag Draw: Lynn Bentson

Block of the Month: Trudy Simon

Wow! I think this potluck must have set a record for number of raffle prizes. Thanks to Beulah Friesen, Laura Morrissey and Lori Rogers for donations this month. Also many thanks to Serge & Sew and Snip & Stitch for their continued support of the guild through their monthly donations. *Kathy Calder*

From Photo Curation...

What a wonderful Nanaimo Quilters' Guild Potluck on December 20! The food and fun was incredible as usual. I noticed a lot of cameras flashing throughout the evening, so please send me any and all photos of this event – AND any other event you've captured. Thanks so much to the women who have already given me such great pictures. Preferably send jpegs to maial@shaw.ca - the show will soon be here – the more pictures, the better. *Maia Levine*



photos from Val's applique class November, 2006
courtesy of Avril Valentine



 Snip & Stitch SEWING CENTRE N A N A I M O <i>Your One Stop</i> <i>Quilting & Sewing</i> <i>Machine Store on</i> <i>Vancouver Island</i>	Clip and Save 20% off Your Next Fabric or Notion Purchase <small>Present coupon at time of purchase. Expires March 31, 2007</small>
HUSQVARNA - WHITE - JANOME - #1 - 4047 Norwell Drive Nanaimo, BC V9T 1Y6 1.250.756.2176 1.800.789.1730 info@snipandstitch.com www.snipandstitch.com	Clip and Save Buy 2 Fat1/4's Get 1 FREE <small>Present coupon at time of purchase. Expires March 31, 2007</small> Store Hours: Mon-Thurs, & Saturday 9:30 - 5:30 Fri. 9:30 - 9pm Sun. 12 - 4
Specials Through out the Store!	JUMP INTO SPRING Open House Friday Feb. 9, 9am-9pm Saturday Feb. 10, 10am-6pm Sunday Feb. 11, 10am-4pm Sale lasts from Feb. 9-20th New Classes

 The Red Barn Quilting Shop
Largest Selection of Quilting Cottons on Vancouver Island Located inside Fabricland
2175 Cliffe Ave. Courtenay, BC V9N 2L5 338-6634 1180 Homewood Rd. Campbell River BC 286-3600

Nanaimo Quilters Guild Newsletter

Volume 23 Issue 5 January 2007



www.islandquilters.ca

6

QUILT SHOW PAGE

Nanaimo Quilters Guild 2007 Quilt Show Committee

Co-conveners:	Dianne Ross 751-0335 dianross@shaw.ca & Norma Franks 756-9691 alanandnormafranks@shaw.ca
Secretary:	Nadine Lindstrom 751-7959 seashell7@shaw.ca
Treasurer:	Corinne Perry 758-7922 coperry@telus.net
Admissions Co-ordinator:	Lynn Bentsen 751-0075 bentsenl@shaw.ca
Balloting Co-ordinator:	Sue Artuso 716-8701
Challenge Quilts Co-ord:	Kathy Bush 758-1917 gandkbush@shaw.ca
Call for Entry Co-ord:	Lorie Rogers 729-9966 lorie.rogers@shaw.ca
Demo's Co-ord:	Paulette Cornish bythesea@shaw.ca
Depot Captain Co-ord:	Maggie Brown 716-0626 jolymagi@shaw.ca
Guild Boutique Co-ord:	Nadine Lindstrom 751-7959 seashell7@shaw.ca & Laura Morrissey 756-9139 lmorris@shaw.ca Linda Robinson 390-2862 robinsonjl@telus.net Laverna Anderson 756-0446 lorrie&laverna@telus.net
Hostess Co-ordinator:	Pat Wylie 741-0504
Information table Co-ord:	Mickey Lemmon 741-0589 rlemmon@shaw.ca
Kid's Quilts Co-ordinator:	Georgia Zieglmeier 758-3730 Gcassandra@shaw.ca & Chris Mousseau 758-6154 & Mickey Lemmon 741-0589 rlemmon@shaw.ca
Lunch Room/Kitchen Co-ordinators:	Avril Valentine 746-9212 avrilvalentine@shaw.ca & Marg Bradley 758-7065 wdmrbradley@pacificcoast.net
Merchants Mall Co-ords:	Val Ansell 758-1185 greenice@telus.net
Past Presidents Award:	Shirley Herritt 758-1760 hersh@hotmail.com
Prizes Co-ordinators:	& Kathy Calder 390-4984 skcalder@shaw.ca
Props Co-ordinators:	Cathy Welte 245-0771 mwelte@shaw.ca & Lillian Charron 245-8345 meme150@shaw.ca
Publicity Co-ordinators:	Sasha Koerbler 741-0555 sashakoerbler@shaw.ca Angela McKenzie 758-1602 afriola@shaw.ca Sue Creba 753-3371 & Bonnie Dormuth 753-9366
Quilt Frame set up/take down:	Val Ursulak 758-3056 jursulak@shaw.ca
Quilt Hanging/Take down:	Coreen Zerr 756-1683 corsew@shaw.ca
Quilts that Comfort Co-ord:	
Quilt Tags:	Lorie Rogers 729-9966 lorie.rogers@shaw.ca
Raffle Co-ordinators:	Barbara Root 245-3320 rootco@shaw.ca & Sharon Martin 748-8700 s.r.martin@shaw.ca
Signage Co-ord (Outdoor):	Sue Creba 753-3371 suecreba@aquariusd.com
Volunteer Co-ordinator:	Bonnie Dimitry 756-3254 bonitad@shaw.ca
Volunteer Room Co-ord:	Velda Schultz 758-7048
Visa/Mastercard:	Nadine Lindstrom 751-7959 seashell7@shaw.ca & Laura Morrissey 756-9139 lmorris@shaw.ca

Making New Year Resolutions?

Be a Volunteer Depot Captain for our 2007 "Material Magic" Show!

What's the job?

Before the Show: collect exhibitor's quilts, at your convenience, in your home. Then deliver them, all together, to Beban for the *Quilt Hanging Crew*.

After the Show: receive the same quilts from the *Take Down Crew* at Beban and redistribute them to their rightful owners.

We will need depot captains in these areas of the City: Ladysmith, Cedar, South Nanaimo, Gabriola, Central Nanaimo, Harewood, North Nanaimo and Lantzville.

Contact **Maggie Brown** at **716-0626** email jolymagi@shaw.ca

Quilt Show Report

We have just five months until our "Material Magic" quilt show is ready to open. Things are going well but we still have lots to do and need every member's assistance.

The license for selling our raffle tickets is here, congratulations ladies! We are getting closer to obtaining our own Visa/Mastercard. Val Ursulak is securing sponsors, if you know of anyone in business who might like to contribute, please contact Val.

Bonnie Dimitry will be on the lookout for volunteers for our many positions and she will have sign up sheets at the February meeting. This is your big chance to share in our show adventure. Maggie Brown is looking for Area Captains; this is a nice job I am sure some of you might be interested in. No

matter how small the job it all helps and makes everyone feel like they belong to our wonderful quilting guild.

After all your Christmas quilting, if you have some small pieces of fabric left, you can cut them into 5" squares. Please bring these to the February meeting, NOT folded. These 5" squares will be used by our publicity committee to advertise our show in various Quilt Shops so we need as many as we can produce. The publicity committee is to be commended for the wonderful job they have been doing. We will also be stuffing the envelopes we are giving away to all our visitors as they enter the show, with a pencil, ballots and the folded 6" squares that you all kindly made for us earlier in the year. Thank you. Co-coordinators Dianne Ross & Norma Franks

1254 Fair Road
Parkville, B.C.
V9P 2C7

Tel.: (250) 248-6020
romar@telus.net

RAINBOW'S END QUILT SHOP

Books • Notions
QUALITY COTTON FABRICS
Classes • Patterns

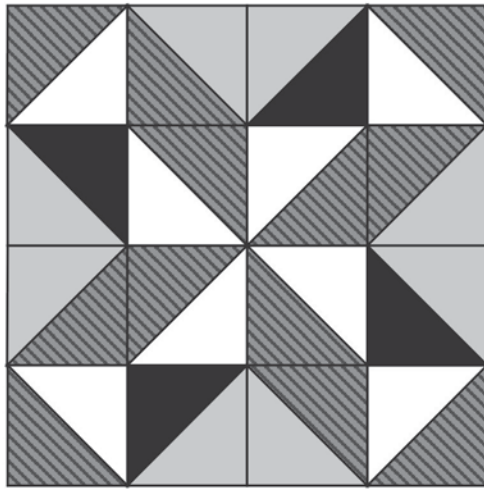
MARY NICHOLAS



This year the Scrappy Bags satellite group has chosen a twisty theme to all of the patterns. As well, each of the blocks will have some black. All colours will change when compared to each other so ensure you are pleased with your fabric choices together. This time around all of the blocks will be **15" finished**. As there are 12 blocks per year, including the summer, simply using sashing will provide a 3 block X 4 block sampler quilt, big enough for a single bed!

***Note:** to help all participants' blocks to wind up the same finished measurement, all seams will be a **scant 1/4"**. Also, any triangles must be pressed flat but gently to avoid stretching.

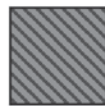
NQG Block of the Month - February 2007



This block is composed of many half-square triangles. It is very effective and really quite simple. Just take your time and follow along one step at a time.



Black on black or plain black
cut 2 squares 4 3/4" each



Medium or Dark purple print or tone on tone
cut 6 squares 4 3/4" each



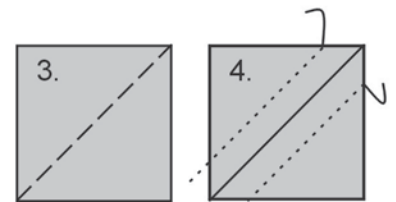
Light purple print or tone on tone
cut 4 squares 4 3/4" each



White on white
cut 4 squares 4 3/4" each

Half square triangles

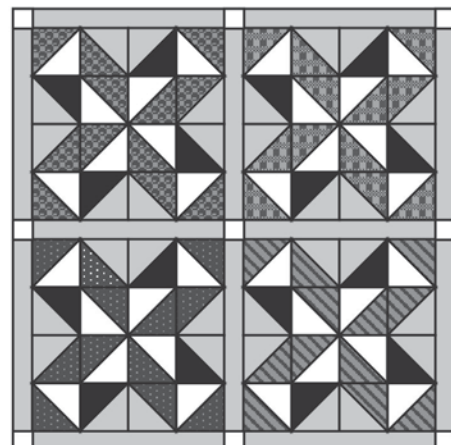
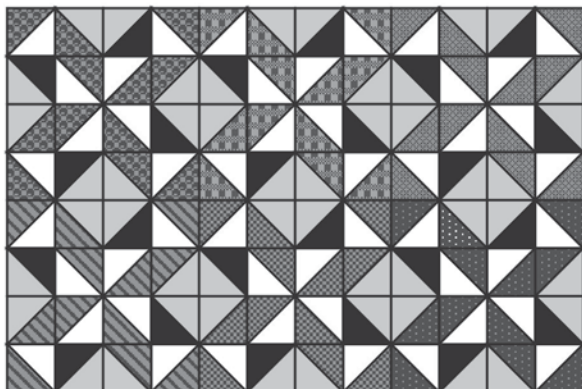
1. Pair the white and the darker purple squares.
2. Pair the light purple squares with the black and the remaining dark purple.
3. On the back of the lighter square of each set draw a pencil line diagonally From one corner to another.
4. Sew a **scant 1/4"** from each side of your drawn line.
5. Cut on the drawn line and gently press each half-square triangle open.
6. Square up each half square triangle to 4 1/4".



Completing your block

7. Piece the half square triangles as in the diagram above, using **scant 1/4"** seams. Notice the areas of matching and being careful of the rotations. It will help if you press the joining seams in rows 1 & 3 left and rows 2 & 4 to the right.
8. Square up your block to **15 1/2"**.

Two different examples



Nanaimo Quilters Guild Newsletter

Volume 23 Issue 5 January 2007



www.islandquilters.ca

8

Satellite Groups

There are a few satellite groups that have openings:

Golden Threads (drop in) Angela McKenzie 758-1602
Mondays 2 - 9, the morning is very full

Chemainus Cathy Welte 245-0771 Mondays Chemainus 9 - 4

Baptist Church Waddington Sandi 756-4758 Mondays 6 - 9

Jonanco Pat Quinlan 722-2179 beginner quilting lessons on
Tuesdays 1-4. \$4 Jonanco drop in fee.

Contact Angela McKenzie at afriola@shaw.ca 758-1602 to
change or add information about satellite groups.

Visiting Quilt Shows

Residents of the retirement homes enjoy the visiting quilt shows.
If you would like to participate sign up at a Guild meeting, or
contact me. The committee would like a collection of quilts to
take to these shows. If you can loan a quilt or wall hanging
please bring it to any guild meeting, and attach your name and
phone number to it. *Chairperson: Pat Clements 753-0616*

Quilt Boutique

The Quilt Boutique is a sale of quilted goods to the public.
Members of the guild make items and work shifts at the sale.
The guild receives 10% of each sale with the balance going to
the participating member. Any guild member may participate.
Contact Nadine Lindstrom (seashell7@shaw.ca or 751-7959).



Geri Green's November presentation on "Round Robin Quilts"

Pat Bays

By Appointment Please
1-250-722-3822

CEDAR QUILTS & FABRIC ART
professional longarm quilting

FAST TURNAROUND
1851 Cedar Road
Nanaimo, B.C. V9X 1L7

pbays@telus.net



The Cloth Castle

Your One-Stop Sewing Shop

Authorized sales and service for Elna, Baby Lock, Juki and Singer

Visit our Website to find information on all our new
classes. We have added several one day classes
great for those who visit us from Up Island.

Also watch for updates regarding our trip to
Sisters Oregon with an extra added day, to
take in a Garden Tour featuring local
Gardens draped with quilts!

July 12-15, 2007

We are filling spaces quickly so be sure
to get your name on the list, you don't
want to miss this great weekend!

The Cloth Castle
786 Goldstream Ave
Victoria BC V9B 2X6
(250) 478-2112
www.clothcastle.com

BIB n' TUCKER QUILTING

Beat the JANUARY BLUES Sale

**Tone on tone blues and
predominately blue prints**

And

Our annual JANUARY WHITE Sale

Tone on tone whites/creams

**30% off reg bolt price
35% on cuts 1m +**

343 D Bay Street (Lower Rear GRAVEL
YARD parking lot) at Turner
250-386-6512 (Mon- Thurs 10-4, Sat 12-4)
Closed Fridays for Grandma privileges

GUILD EXECUTIVE

President-Afternoon	Shirley Herritt-758-1760
1st Vice President	Judy McLaughlin temporarily
2nd Vice President-Eve.	Judy McLaughlin-758-3866
Treasurer-Afternoon	Florence Dorschied-756-3912
Assistant Treasurer-Eve.	Maggie Brown-716-0626
Secretary-Afternoon	Buelah Friesen-754-3480
Secretary-Evening	Norma Franks-756-9691
Librarians	Angela McKenzie-758-1602 Sasha Koerbler 741-0555
Show Committee	Norma Franks-756-9691
Co-Chair	Diane Ross-751-0335
Program	Bonnie Dimitry-756-3254
Newsletter	Sue Creba-753-3371
Newsletter Advertising	Phillippa Zapf-756-0844
Comfort Quilts	Anne Yelle-756-1899 Ruth Wilkinson-753-1676 Ina McCowan-758-5446
Placemats	Georgia Zieglmeier-758-3730
Hospitality	Ruth Wilkinson-753-1676
Afternoon Hospitality	Gail Lambourne 758-9292 Margaret Carmichael 758-4729
Coffee	Mary Laanala-756-1127
Membership	Marcia Miller-245-2223
Co-Chair	Chris Potvin-722-2779
Raffles-Afternoon	Kathy Calder-390-4984
Publicity	Maggie Brown-716-0626
Quilt Bee	Cathy Welte-245-0771
Co-Chair	Lillian Charron-245-8345
Visiting Quilts	Pat Clements-753-0616
Pot-Luck-Christmas	Bonnie Biel-756-3245
Pot-Luck-Picnic	Audrey Hale 245-0533 Lillian Charron-245-8345
Boutique	Nadine Lindstrom-751-7959
Fabric Exchange	Lillian Dalton-756-9804
Block of the month	Tracy Belcher-754-9943
Historian	Sharon Relkey-390-3227
Photo Historian	Maia Levine-753-8205
Phoning	Paddy Wynne-758-8650
Promotional events	Hope Jordan-758-5478

GUILD CALENDAR

January 3	Quilt Show Meeting-3137 Barons Road-7 pm
January 9	Executive Meeting, Save On Foods, Woodgrove 1:30 pm
January 17	Guild Business Meeting, Brechin United Church, 1 & 7 pm Trunk Show by Judy Farrow
January 22	Newcomers' Tea 1-3 pm at 2860 Cosgrove Crescent
January 27	Quilt Bee, Kiwanis Lodge, 9 am - 4 pm
February 7	Quilt Show Meeting 3137 Barons Road 7 pm
February 10	Workshops: Lillian Charron: Sew and Flip Jacket & Patty McRory: Illusions Part 1
February 20-23	Camp Homewood Retreat
February 28	Guild Program Meeting, Brechin United Church, 1 & 7 pm Quilt Show Preparation
March 3	Workshops: Kathy Bush: Paper Piecing & Patty McRory: Illusions Part 2
March 7	Quilt Show Meeting-3137 Barons Road-7 pm
March 13	Executive Meeting, Save On Foods, Woodgrove 1:30 pm
March 21	Guild Business Meeting, Brechin United Church, 1 & 7 pm Demonstrations & Talk on EQ5 and other quilting software by Lynn Phillips
April 4	Quilt Show Meeting 3147 Barons Road 7 pm
April 18	Guild Business Meeting, Brechin United Church, 1 & 7 pm 1) Nominations 2) "Gadgets & Special Finds" by Mary of Rainbow's End 3) Trunk Show by Barb Root
May 2	Quilt Show Meeting 3137 Barons Road 7 pm
May 8	Executive Meeting, Save On Foods, Woodgrove 7:00 pm
May 16	Guild Business Meeting, Brechin United Church, 1 & 7 pm Elections
May 24	Quilt Show Set-Up
May 25-27	Quilt Show, Beban Park
June 13	Executive & Cross-over Meeting, Brechin Church- 7pm All past and new executive required to attend.
June 20	Guild Year End Pot-Luck, Bowen Park 3-8 pm Dinner @ 6 pm

SERGE & SEW

www.sergesew.com

250-390-3602

6750 Island Highway N., Nanaimo, BC, V9V 1S3

*Featuring a fabulous selection of quilting fabrics,
books, patterns & notions.*

AUTHORIZED PFAFF DEALER

Servicing & repairs to most sewing machines & sergers.

Sales & Events are announced on our website, the Bulletin Newspaper and Radio FM 88.5

Come see what we're all about!