

Nanaimo Quilters Guild Newsletter

Volume 26 Issue 10 June 2010



www.islandquilters.ca



Quilt Show ~ Beban Park

Set-up: Thursday, June 17

Show: June 18, 19, 20

Quilt pickup: June 20, 5 p.m.

Next Meeting

No June meeting due to Quilt Show

Next meeting September 15, 2010

Brechin United Church

Doors open at 12:30, 6:30

Meeting at 1:00 and 7:00

Next Executive Meeting

June 10 (1:00)

Country Grocer, Southgate

Newsletter Deadline

August 22 (for September issue)

Remember in September:

- name tag
- **your own cup!!! Please!**
- completed membership form & fees
- library books
- Mug Tote (see page 11)
- donation placemats/quilts/show & share
- change for raffles
- block of the month (for September)
- newsletter
- baking (if it's your turn)

If you have something of interest for our Guild website, please send it to Avril Valentine at avrilvalentine@shaw.ca

Membership/Hospitality

Please stop at the Hospitality table when you arrive, sign in, and pick up your ticket for the name tag draw. **You must be wearing your name tag in order to win the draw.** Please sign out if you leave before the end of the meeting.

Yummy Baking ...

Thanks to everyone who brings goodies for our meetings. Watch the September newsletter to see if it's your turn.



June 18-20

**Beban Park
Recreation Centre**

Nanaimo, BC

2010 QUILT SHOW Just days to go!

From Our Presidents' Pens

We never did find spring – but we hear summer is just weeks away. Hooray! By the time our “MATERIAL MAGIC” Quilt Show is over we will be into the next season.

Speaking of our Show, did you realize how many Guild members own businesses and have become Platinum, Gold, or Silver sponsors for our Quilt Show? Without their generous donations, and the generosity of our advertisers, we wouldn't be able to provide the many prizes we share. Please take time to thank our donors when you see them. If you are lucky enough to receive a Show prize, be courteous and send a personal “Thank You” to these members, and businesses. While many businesses are experiencing difficult financial times our friends continue to support us. From each Guild member **THANK YOU FOR YOUR THOUGHTFULNESS and GENEROSITY.**

After such a busy Guild year, the Committees are updating their binders, and writing reports. We had an extremely hard working, dedicated group of executive, committee chairs, and committee members. It takes such great dedication from everyone to have such a successful Guild. To all of you who have worked relentlessly throughout the year we thank each one of you. We wish continued success to all those members who have given themselves permission to enjoy the camaraderie of fellow guild members by standing up and taking their turn at running the Guild. A list of the newly elected executive and committee volunteers is on page 3 & 4. We have three positions still unfilled: Secretary (evenings), Coffee (evenings), and Donation Quilts (afternoon) one more person required. **Good news! We will continue to hold our meetings at Brechin Church next year!**

All new and **retiring executive, committee chairs, and committee members** are requested to attend our change-over meeting. Retiring committee members are required to return their duty binders. New committee members are encouraged to ask questions of the retirees. It is very important for you to attend this meeting.

Please note the following information for our “**CHANGE-OVER MEETING**”

DATE:	June 10, 2010
DAY:	Thursday
TIME:	1:00 P.M.
PLACE:	Country Grocer (up stairs next to deli and coffee shop) 82 12 th Street, Nanaimo, B.C.

Enjoy our “Material Magic” Quilt Show. Have a peaceful, relaxing summer. We look forward to meeting again and renewing friendships in September. *Sincerely submitted by Co-presidents Barbara Root and Norma Franks*

THINGS THAT WILL HAPPEN DURING THE SUMMER OF 2010

- Printing of the updated “Guild Handbook” for Guild members;
- Printing of the By-Laws and Constitution (to be included above);
- Budget Committee meeting, to be called by Carol Bailey;
- Updating of the “Material Magic 2010 Show Committee” binders (each committee updates their own binder);
- Committees and executive members will arrange individual meetings.
- ‘Mug Tote Bags’ will be made by many guild members (see page 11)
- You will save your loonies and twonies to purchase raffle tickets.

SUMMER MUG BAG CHALLENGE ON PAGE 11

NQG Box 943 Nanaimo BC V9R 5N2 Editor suecreba@aquariusd.com



QUILT SHOW PAGE

The Mayor of Nanaimo has officially declared June 14 to 21, 2010 as Quilt Week!

Spread the Word about the Quilt Show

A friendly reminder for each Guild member to **telephone, email, Facebook** or somehow contact all your friends (anyone that breathes!) the second week of June and remind them to come to the quilt show! Tell them the days, times and a little bit about the activities during the show. Suggest they bring a friend or two along.

Make sure you have your Quilt Show Poster put up in a high traffic area.

June is Quilt Month in Canada, June 14-21 is quilt week in Nanaimo and this is our 25th anniversary celebration so let's get our friends to celebrate with us!

*Gail Lambourne and the Threadcatchers
Publicity Committee for Material Magic 2010*

Baking Needed for Quilt Show

A reminder to all Guild members that we need cookies, bars, cakes, and slices for the goodie plates for the quilt show. We will need these for the Friday, Saturday and Sunday of the show. Your baked goods may be dropped off at the kitchen area at Beban Recreation Centre. *Mickey Lemmon*

Quilt Show Ballots

"Show Committee Ballots" still need to be picked up from Barb Root by: **Admissions Committee: Lynn Bentsen/Sue Creba etc. , Comfort Quilts: Barbara Clement, Volunteer Lunchroom: Bonnie Beil**

Please return **ALL** ballots to the regular ballot box which will be located at the quilt show entrance door.

SELLING RAFFLE TICKETS AT WOODGROVE

We want to thank all the members who sold raffle tickets at the mall. But we send a special thank you to Bonnie Beil, Bonnie Dimitry, Jim and Val Ursulak for setting up the display at 7:30 a.m. Friday morning. Thanks to Bonnie D. and Betty Wright who had to take the display down again at noon because of a glitch, and then put it up again. Then Laura had to take the display down Friday evening, and Laura and Frank put it up again Saturday morning. Val and Laura took it down again Saturday night. Nothing about this Guild year has been straight forward, nor quick and easy. Guild members please take time to thank these guild members for all the effort they put into making this such a special Guild. We hereby send you all on a relaxing trip to **Paducah**.

Show Volunteers

Many thanks to all those who have volunteered to fill the numerous jobs at our guild show in June - we can't do it without you and as of this moment all the positions are full!

Most of you have picked up your show name badge, please don't lose it as it is your free pass into the show. For the ladies who did not get a chance to get theirs, it will be waiting for you in the volunteer room at the show - just let the gals at the admission table know that you are working in the show and go to the volunteer room to retrieve it. When you're finished with your jobs and will not be returning to the show or at the end of the show, please place the plastic name badge holder in the basket in the volunteer room.

For anyone who has to cancel a job, would you please contact me ASAP and let me know, by the same token, should anyone find extra time they could give to the show, please let me know you are available. We have many people who are bringing in baking for the tea and volunteer rooms, however, we can always use a bit more - just bring it in early in the morning and hand it over to the girls in the kitchen - it will be very much appreciated. Thanks again to all, *Bonnie Dimitry, 250-756-3254 Show Volunteer Coordinator*

Placemats for Quilt Show

A reminder to all Guild members that we need your very best placemats for the tea room at the quilt show. Please contact Georgia 250-758-3730 or Chris 250-758-6154 to arrange.

A reminder from Publicity that we are responsible to take down all of the show posters that we put up.

Quilt Show Boutique

The Boutique is looking for good quality, handcrafted, sewing related items, less than 2 years old to sell at our Quilt Show. The Guild will deduct a 15% commission from the asking price....BUT you get the other 85%!

Here are some of the categories: Christmas related (ornaments, tree skirts, stockings, etc.), Baby items (quilts, toys, pillows, wall quilts, etc.), Kitchen items (table runners, placemats, tea cosies, coasters, etc.), Bedroom items (quilts, throws, pillows, etc.), Clothing items (jackets, vests, skirts, bags, accessories, etc.), Miscellaneous items (art quilts, pincushions, book covers, etc.)

Please read the Inventory Sheet published in the February newsletter for more details. You must be a paid up guild member before the end of November 2009 and must volunteer time to work at the show to enter items for sale in the Boutique. Thank you, *Janet Williams*

Nanaimo Quilters Guild Newsletter

Volume 26 Issue 10 June 2010



www.islandquilters.ca

3

2010/2011 Quilt Guild Executive & Committees

President	Norma Franks
Evening Co-Chair	Philippa Zapf
Evening Co-Secretary	needs volunteer!
1st Vice Chair	Philippa Zapf
2nd Vice Chair	Kathy Bush
Co-Treasurer	Carol Bailey
Co-Treasurer	Linda Totzke
Evening Treasurer	Nancy Lutes
Secretary	Nancy Price-Munn
Understudy	Buelah Friesen
Past President	Barbara Root
Block of the Month (aft)	Robin Flynn
Block of the Month (eve)	Val Ansell, Sandra Radley
Boutique	(not required)
Challenge	Annelies Massey
Christmas Potluck	Heather Henderson, Margaret Barrand, Penny Whittaker, Marg Bradley needs chair!
Coffee (afternoon)	Lynn Bentsen, Grace-Ellen Capier, Blanche Elliot, Elaine Evans needs chair!
Coffee (evening)	needs volunteer!
Donation Quilts (aft)	Deirdre Love, 1 more required
Donation Quilts (eve)	Judy McLaughlin
Fabric Exchange	Beulah Friesen
Fabric Exchange	Pat Quinlan
Food Bank	Norma Franks, needs help to carry
Historians	Greta Simmons, Marsha Whitmee
Hospitality (afternoon)	Ingrid Morton, Gwyn Oaten, Merle Armour

Hospitality (evening)
June 2011 Picnic

Library

Membership (afternoons)
Membership (eve)
Newsletter
Newsletter Advertising
Nominating Committee
Phoning Committee

Placemats (aft)
Placemats (eve)
Program (aft)

Program (evenings)
Program Understudy(s)
Program Angels & Setup

Barb Peters, Julie Garland
Barbara Clement, Ginette Schewe,
Penny Whittaker
Linda Addison (chair), Deri Morris,
Judy Baun, Cheryl Tellier, Chris
Potvin, Marcia Miller, Lil Kroll,
Helena Moeller, Ingrid Morton, Lois
Gilbert, Kathy Calder, Mary Dodds,
evenings: Betty Stone, Betty
Wright, Dianne Miller, Geri Mendez,
Trellis Craig
Tracy Irwin & the Scrappy Bags
Moire Porter, Barbara Kerfoot
Sue Creba & the Scrappy Bags
Carole Dorward
Barabra Root
Holy Wells, Audrey Curtis, Carole
Dorward **needs chair!**
Lori Skerget, Sandra Radley
Judy McLaughlin
Angela McKenzie, Lise Skalos,
Caroll Rumo
Bonnie Dormuth, Sue Thurmeier
Dianne Busch, Sherry Drebnicki
Lorna Craig, Lynn Bentsen, Linda
Robinson, Judy Petersen, Shirley
Fulla, Janet Williams, Audrey
Malmin, Sandy Dobson, Leslie
Millward, Carolyn Kavanagh



Huckleberry's Fabrics Inc.

1930 Ryan Road East
Comox, BC, V9M-4C9
250-339-4059
1-877-339-4059 Toll Free
e-mail : sewfun@telus.net

Bernina 830

The only, luxury, high-performance sewing
and embroidery system in the world.



When you create on the BERNINA 830,
your grandest ideas can come to life. That's because it offers the most
sewing and embroidery space, unbeatable speeds, and the most advanced
ergonomics of any home sewing machine. It's time to think bigger.

Check out our summer classes and events
Summer Newsletter available end of June
Make sure you're on our e-mail list



2010/2011 Quilt Guild Executive & Committees

Publicity	Leslie McDonald
Quilt Bee	Mickey Lemmon, Shirley Fulla, Dianne Ross, Fran Nicklom, Shirley Herritt, Kathy Calder
Raffles (afternoon)	Judi Moran, Bobbi Moss, Sharon Martin, Patty Jones, Jean Morris, Irene Madsen
Raffles (evening)	Marlene Jones, Pat Quinlan, Penelope Woodwark
Trips and Retreats	Bonnie Dimitry, Sue Artuso
Visiting Quilts	not required
Webmaster Liaison	Avril Valentine

Duties of Executive & Committees

- Arrive at the meeting hall at 12:00 and/or 6:15
- Be set-up and ready to tend to members by 12:30/6:30
- Find a replacement to fulfill your duties in your absence
- Send monthly report to the Secretary, prior to executive and guild meetings;
- Attend scheduled executive meetings and guild meetings
- Notify the secretary if you will be absent or will arrive late
- Read your duty binder and update as required

Program

Where has the year gone? We hope you have enjoyed the workshops, mini demos, trunk show and other presentations that have occurred over this past year.

There has been a wealth of new knowledge presented at these activities and I'm sure your minds have been expanding along with them.

We would like to thank those who have stepped forward to help with the Program Committee. We have Sherry Drebnicki, Carolyn Kavanagh, Dianne Busch and Leslie Millward. Your help and input will be greatly appreciated. We also have many Angels who have signed up to help us as support workers during the workshops. We will be contacting each of you to discuss your availability for the 2010 – 2011 Workshops and the Role of an Angel.

Your enthusiasm to register for our two fall classes is terrific.

Kathy Bush: "Creating a Quilted Wall Hanging from a Photo" has one space left;

Barbara Shapel, Day One: "The Art of Machine Quilting" class is full;

Barbara Shapel, Day Two: "Thread Painting, Three Samplers" has one space left.

Correction to the April Business Meeting minutes: Kathy Bush did not volunteer to head a committee for the garage sale. A garage sale is still being looked into. *(continued page 5)*



Sweet Pea Quilting

25 Roberts Street, Ladysmith,
British Columbia, Canada
V9G1A2

www.sweetpeaquilting.ca
Email: sweetpea.quilting@shaw.ca
Telephone: 250-245-2114

Long Arm Quilting

See us for your machine quilting needs.

- Quick 2 week turnaround
- Computerized and custom quilting

We also carry a fabulous selection of current fabrics, threads, notions, patterns and books.

Just 1/2 block off the Trans Canada Highway



SERGE & SEW



250-390-3602



105 Nored Plaza, 6750 Island Hwy., Nanaimo

Featuring fabulous Quilting fabrics,
Books, Patterns & Notions
Authorized PFAFF & Babylock dealer:
servicing & repairs to most
sewing machines & sergers.

Check our website
www.sergesew.com
for EVENTS & SALES!



Program (*continued*) We look forward to offering you some interesting workshops in the coming year. A few names to drop are Pippa Moore, Ionne McCauley, Coreen Zerr, Sandra Radley, Sue Creba and Tracy Belcher (who will be Tracy Irwin after her summer wedding – congratulations Tracy!) and Penny Whittaker. There are also several guild meeting presentations lined up for you. We are really on the ball this year and have it all lined up, basically!

BUT, we are still looking for people and ideas for the two mini-demo sessions for next year – one in October and the other in February. If you think that you would like to try teaching at some time, why not consider starting out with a small 30 minute demonstration to get the feel of it? Or maybe you have a friend who has a neat technique to share with the guild. Give her a little encouragement! We even pay \$35 per session that you teach!! Who doesn't need a little more money to purchase fabric? If you or a friend is interested, please contact Lise Skalos at nggprogramme.lise@shaw.ca

Your Program Committee: *Angela McKenzie, Lise Skalos, Sue Thurmeier, Bonnie Dormuth, Caroll Rumo*

Donation Quilts

All quilts donated to any organization or person should go through the Donation Quilt Committee, who will fill out the necessary paperwork to submit to the Comfort Quilt Society.

Fabric Exchange

If you want to join the Fabric Exchange for next year, please phone Buelah at (250)-754-3480.

Trips and Retreats

Retreat at Camp Homewood November 8-12, 2010

We now have an idea what the cost for this retreat will be. They will have to add the HST to the price, however, the camp staff decided to implement their new pricing structure for our group this year which means they will reduce the overall price by 25% because we program ourselves. This works out to approx \$170 to \$175 per person for the 4 nights, HST included - much less than we paid last year.

Trip to Sisters, Oregon July 7-11, 2011

As of this moment, we have 34 gals going on this trip - that's just 2 below our minimum number required, so I think it's safe to say we will definitely be going. Let's hope our dollar starts going up soon! This leaves 10 spaces open right now. If you decide you would like to join us, please contact Sue at 250-716-8701 or Bonnie at 250-756-3254 to register. Remember, we can only assure you a seat on the bus once you have paid your deposit of \$300. Beginning in September, any vacant spaces will be available to groups and individuals outside the guild and those vacancies are expected to go quickly.

For Sale

Dritz PVC floor quilting frame, 28" x 39", 4 adjustable legs (height adjusts from 29" to 35"), tilts to 4 angles, 4 clips. New \$120, asking \$50 or best offer.

Older **Roncoscribe metal and glass light table**, 18" x 24" x 4.5" high, glass area 14" x 9". Asking \$25.
Call Tracy Belcher 250-754-9943.

QUILTING JUST GOT BETTER
NEW PROJECTS & PATTERNS
Bali, 100% Cotton & Flannel Fabrics
\$8.50 - \$14.50 per meter
Workshops in Manipulation and Reconstruction

Flannel Panels for quick summer projects
“ THE CATS MEOW ”, Floral Prints & panels will get you
creating with LUTRADUR & TEXTURE MAGIC
Go to www.cambieartsupplier.com for FREE pattern downloads
CAMBIE ART SUPPLIER 521 West 57th Ave. Vancouver, BC





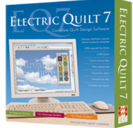
Library News

Thank you to all the Library helpers, even if you just popped in for a few minutes to help us, your help is very much appreciated. The library wouldn't be running as smoothly as it is without the help of some very dedicated volunteers. Thank you! Thank you! A big thank you also to everyone who returns their books on time. It makes our job so much easier!

Please remember to return the patterns to the right books. "Orphan books & patterns" take so much time to match up. If you find pages/patterns missing please tag the book & let us know.

Please, please, please – don't tear pages out of books & magazines!!

Have a great summer everyone! See you at the Quilt Show!
The Library Team



Design ~ Dream ~ Create

Electric Quilt Version 7
(and upgrade from 6 to 7)
now available!



See our **New**
Give & Take Applique
Patterns too!

p a t c h
w o r k s
studio

Details on our website - or give us a call
www.patchworkstudio.com
email: patchworkstudio@shaw.ca
phone: 250-595-4411

Raffle Report

Thank you to everyone who supported Raffles and Mystery Fabric this year. We were very pleased to make \$750.00 for the SD68 bursary for a textiles student through the mystery fabric ticket sales. Thank you also to the many people who so kindly made donations for raffles. When expenses are deducted the raffles prize money goes to the Guild. See you at the Show. *Linda Robinson and Debbie Lacey*

May Raffle Winners

Mystery Fabric: Laura Beswick and Lori Skerget

Raffles: Audrey Curtis, Angela McKenzie (2), Philippa Zapf, Deri Morris, Kathy Peters, Eimear Keane, Nell Campbell, Gail Lambourne, Sue Creba, Barbara Clement, Judy Mirau, Yvonne Jans, Betty Wright, Moire Porter, Sandy Dobson, Cathy Welte, Marcia Miller, Lillian Dalton, Val Ursulak, Sue Artuso

Door Prize: Linda Totzke

Show and Share: Lillian Charron, Kathy Carter

Block of the Month: Bev Cottrell

Amount received for Mystery Fabric \$108.35, Raffles \$268.
Thanks to Cindy's Threadworks and Betty Beck for their donation of prizes!

Christmas is Coming
to
Kismet Quilts



Saturday, July 24th, 10am—5pm
In-Store Specials
Refreshments

Stop by our booth at the "Material Magic Show"
in Nanaimo June 18-19-20 and receive a
Discount Coupon valid throughout the month of July

5334 Argyle St., Port Alberni, BC V9Y 1T8 (250) 723-6605



www.kismetquilts.com

Long Arm Quilting Services, Fabrics, Notions, Books,
Gifts, Large Selection of Wide Goods, Classes



Snip & Stitch
SEWING CENTRE
Discover the world of sewing!
"Wander through our store
for a refreshing experience"

Kathryn Fudge is Back!
Fabric Sculpture
Basic
"Sitting Figure"
Sun. July 18
9:30-4:30



Twisted Bargello
with Eileen Wright
Tues. June 15 & 29
10-4 Each Day
Call today to Register



Limited Seating Register Now!

Snip & Stitch Sewing Centre Ltd. is located at:
#1-4047 Norwell Dr., Nanaimo BC, V9T 1Y6.
Phone us at 250-756-2176 or 1-800-789-1730
www.snipandstitch.com



September Block of the Month

Thanks to those who participated in May's Block of the Month draw. Bev Cottrel won the 12 lovely blocks. This month it seemed appropriate to choose a Schoolhouse block. We have designed a pieced version using simple shapes and easy measurements. By now most of us have a selection of batiks and related fabrics in our stash. Batiks add so much texture and colour, we thought we'd give you an opportunity to experiment with them in this block. If you have no batiks, choose tone-on-tone and fabrics with small patterns.

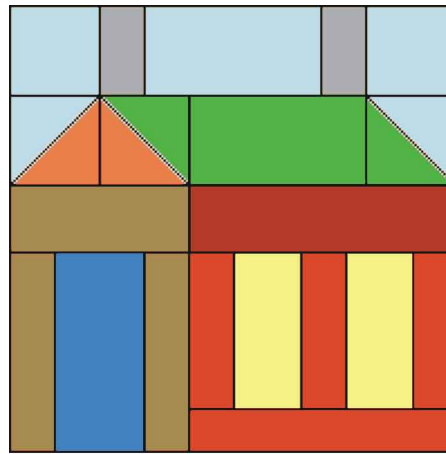
In order to make the setting more interesting, we're going to split the alphabet in half. Everyone whose last names begin with **A to M** will do a *nighttime sky* and a *light door* and those beginning **N to Z** a *daytime sky* and a *dark door*.

Remember, accuracy in cutting and piecing is important. All seams are $\frac{1}{4}$ ". Block $10\frac{1}{2}$ " x $10\frac{1}{2}$ " (unfinished). The block can be increased to $12\frac{1}{2}$ " x $12\frac{1}{2}$ " by adding 2" sashing strips to two adjacent sides.

Fabric Choices and Assembly:

The colours in the sample block are only suggestions. For those who receive the black and white version, A, B and D are sky. C is brown. The roof (F and G) is green and the peak (E) is orange. The eaves (H and K) are 2 browns. The door (J) is blue, the windows (L) are yellow and the walls (I, M and N) reds and browns. Try to give your block a scrappy look.

We have divided the block into four horizontal sections. (See sketch at right) Lay out the block as you cut out the pieces. This will simplify the assembly.



Schoolhouse Block

Sky section:

A:	2:	$2\frac{1}{2}$ " x $2\frac{1}{2}$ "
B:	1:	$2\frac{1}{2}$ " x $4\frac{1}{2}$ "
C:	2:	$1\frac{1}{2}$ " x $2\frac{1}{2}$ "

Roof section:

D:	1:	3" x 3"
E:	1:	3" x 3"
F:	1:	3" x 3"
G:	1:	$2\frac{1}{2}$ " x $4\frac{1}{2}$ "

Cut D, E and F on the diagonal.

We found it easier to join and trim the triangular units to $2\frac{1}{2}$ " x $2\frac{1}{2}$ " before constructing the rest of roof.

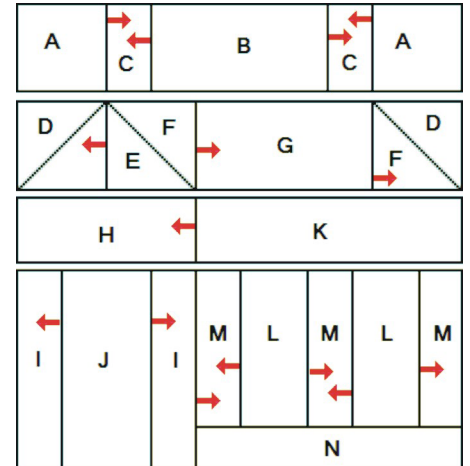
Eaves Section:

H:	1:	2" x $4\frac{1}{2}$ "
K:	1:	2" x $6\frac{1}{2}$ "

Wall section:

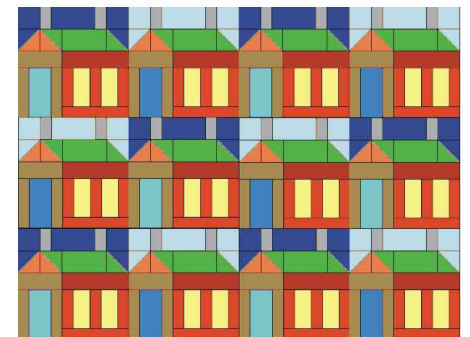
I:	2:	$1\frac{1}{2}$ " x 5"
J:	1:	$2\frac{1}{2}$ " x 5"
L:	2:	2" x 4"
M:	3:	$1\frac{1}{2}$ " x 4"
N:	1:	$1\frac{1}{2}$ " x $6\frac{1}{2}$ "

The sketch below is a placement diagram. The arrows indicate pressing direction for the *vertical* seams. Press the diagonal and horizontal seams as you choose.



Assemble the block according to the placement diagram. Be sure to nest the seams of the chimneys with the peaks of the roof. Adjust the seams if necessary.

I hope the instructions are clear. Any questions, suggestions or problems, please call me at 250-758-1185. Wishing you joy, Val Ansell and Sandra Radley



Sample Layout



Classes • Books • Charts • Fibres • Fabrics • Supplies



#7, 70 Church Street
Nanaimo 250-591-6873
www.thestitchersmuse.com

Our very first retreat! Come join Jackie du Plessis for the weekend of October 15th to 17th, 2010. Meals, accommodation, and all supplies included, plus a goodie bag! Details to be announced. Limited registration.



Ph: (250) 248-8449 P.O. Box 606
Fax: (250) 248-8451 #1-180 Craig Street
Marian Whitney Parksville, B.C. V9P 2G7

grammas_quilting_cupboard@shaw.ca
www.grammasquiltingcupboard.com



BIB n' TUCKER QUILTING

June Sale

ALL BATIKS

25%-35% off 2m + (same bolt)
1/2 m minimum cuts

All things SHARP

**Cutters, blades, scissors,
Pins, needles**

20 - 30% OFF reg price

343 D Bay Street (at Turner) Victoria BC
(Lower Rear GRAVEL YARD parking lot)
386-6512 (Mon-Thurs 10-4, Sat 12-4)

CREATIVE QUILTING

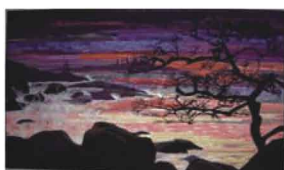


Darlene Potts

102-5869 York Road, Duncan, BC V9L 3S3

Phone: 250.746.8033 Fax: 1.866.847.8629

creativequilting@telus.net



Coreen Zerr
Quilt Designer
and Instructor

3648 Glen Oaks Drive
Nanaimo, BC V9T 5L3

Phone: 250-756-1683
Cell: 250-619-7060

Corsew Designs

*For upcoming classes offered in my
home studio, guilds, and quilt shops,
please check my website*

www.coreenzerr.com

e-mail:
corsew@shaw.ca



<http://www.cindysthreadworks.com>

*Choose from the Largest Selection
of Superior Threads in Canada*

 EARLY BIRDS Shop On-line/Pick Up@
NQG Material Magic Quilt Show
Merchant Mall, June 18-20

Phone: (250) 738 0560

Email: cindysthreadworks@telus.net



Minutes of May 19, 2010 Annual General Membership Meeting

Presentation by Bruce Sharock of Expedia Cruise Ship Centers about a Shop Hop Cruise to Hawaii April 24-May 12, 2011.

Meeting called to order at 7:08 pm by Co-President Norma Franks. There were 111 members in attendance.

Minutes: The minutes were approved as corrected.

Correspondence: Invitations: Nanaimo-Ladysmith Schools Foundation District Honours Night: Lorie Rogers to attend. Nanaimo Cultural Forum May 18: Carol Bailey and Gail Lambourne attended. Thankyous: from Vivian Scott who is recovering from eye surgery, from Kim Harrison, Haven House, for the donated quilts. Get well cards: to Judy Baun, Barbara Hallum, Shirley Herritt, Vivian Scott, Paddy Wynne, Sherry Lynne Ellis and Florence Dorscheid. A sympathy card was sent to Barbara Waine on the recent death of her mother.

Treasurer's Report: Carol Bailey presented information on GST/HST and how this will impact our finances, and outlined the amounts that are reserved for upcoming expenses. She reported on the Nanaimo Cultural Forum and how the financial situation has changed for numerous groups in Nanaimo.

COMMITTEE REPORTS:

Challenge: Challenge postcards were collected.

See reports for Fabric Exchange, Library, Program, Trips and Retreats, Raffles in this newsletter.

Newsletter: Sue Creba presented information about mailing costs of the newsletter.

Motion: Moved by Sue Creba, seconded by Ginette Schewe That effective September, 2010 regular members who wish to have their newsletter mailed to them: a) pay an additional \$10 per year or b) provide the Newsletter Committee with 10 self-addressed, stamped envelopes 7 of which have a regular priced stamp affixed (current rates \$.57 each), and 3 of which have an overweight stamp affixed (current rates \$1.00 each) c) There will continue to be no mailing cost for honorary members. **CARRIED**

Quilt Show: Last formal meeting of the Committee was May 20. Wrap-up meeting & potluck at Avril Valentine's on June 3. Gail Lambourne encouraged members to visit our website for Quilt Show Information and to thank sponsors who are listed there. Kathy Bush distributed bookmarks to go to various Quilt Shops. Lori Skerget outlined instructions for members when they drop off their quilts at their Depot Captains' homes, Depot Captains will be calling members for time and location. Val Ursulak thanked members for their wonderful response to both selling raffle tickets, and returning tickets and money. Members are encouraged to send a thank you card to the donors of prizes if they receive a prize at the Quilt Show. Bonnie Dimitry gave out volunteer name badges. (Note your jobs and time slots are printed on the back.) Please hand in the plastic holders after the Quilt Show so they can be reused.

Unfinished Business: Norma Franks informed members of the necessity to purchase Directors and Officers Insurance.

Motion: Moved by Avril Valentine, seconded by Coreen Zerr that the Executive of the Nanaimo Quilters' Guild be given permission to purchase Directors and Officers Liability Insurance. **CARRIED**

The matter of raising the membership fee was discussed.

Motion: Moved by Val Ansell and seconded by Maria Szijj that the Nanaimo Quilters' Guild annual membership fee be increased to \$30.00 per member as of September, 2011.

CARRIED (This motion was voted on by ballot. Votes cast: 108. Necessary number for adoption: 74. Number of votes FOR the Motion: 103. Number of votes AGAINST the motion: 5)

Election of Directors and Officers for 2010/2011: The election was conducted by Past Presidents Avril Valentine and Eimear Keane. (See results on page 3 and 4)

Show and Share: Thanks to all who have brought your lovely quilts this year - it's always the favorite part of our meeting. Hopefully we'll see most of them again at our Quilt Show.

Stitches
phone: 250.537.8985
Creativity@StitchesFibreArtSupplies.ca
www.StitchesFibreArtSupplies.ca
127 Rainbow Road Salt Spring Island, BC V8K 2V5

Judy Farrow
Fabric Artist
911 Little Mountain Road
Parksville, BC. V9P 2C3
Canada
250 954 3797
judyfarrow@shaw.ca



Quilt Shows

Lions Gate Quilters' Guild, 10th "Album of Quilts" Fri. June 11 9-7, Sat. June 12 9-5 Admission \$6, children <12 free. Delbrook Community Centre, 600 W. Queen's Road (Delbrook/Westview), North Vancouver www.lionsgatequiltersguild.com

The Grand National Quilt Show May 8-June 13. Homer Watson House and Gallery, 1754 Old Mill Road, Kitchener, Ontario

Gibsons Landing Fibre Arts Festival Aug. 19-21. Workshops, Juried Exhibit and Sale, Merchant Mall, Artisan Market. Contact www.gibsonslandingfibrearts.com

2nd Annual "Quilts at Tanglebank Gardens" September 11 10-4, 29985 Downes Road, Abbotsford. Quilts, patterns, fabrics, wool, kits, a designer's challenge, specialty booths and refreshments. Contact Cheryle countryquilts@shaw.ca or 1-604-855-0834

Boundary Bay Quilters Guild "...And The Stitch Goes On" Quilt Show Oct. 1 & 2 Admission \$5, Husbands Free. South Delta Recreation Centre, 1720 56th Street, Delta, BC Friday: 1-7, Saturday: 10-5 www.boundarybayquiltersguild.ca Dawn Fielden 604-948-0692

Blue Mountain Quilters' Guild "Quilts Galore", October 16-17 Saturday 10-5, Sunday 10 - 4 Montgomery Middle School, 1900 Edgewood Avenue (just south of Austin Ave) Coquitlam www.bluemountainquilters.ca

Donate Your Sewing Machine

Andra Thakur, former tailor and retired Anthropology Professor from Vancouver Island University, is going to Letham, Guyana to teach tailoring to women with families and young adults who have dropped out of school. He will be there November 2010 to March 2011 and teach two classes a day for 16 weeks.

In a country where school uniforms are mandatory, tailoring and sewing machine skills are a viable means of employment.

Andra successfully taught a similar course in New Amsterdam, Guyana November 2009 to February 2010 and 17 graduates happily went on to earn income through their newly acquired skills. The 500+ uniforms created while learning the trade in the classroom were donated to the poorer students in the community who could not afford them.

If you have a sewing machine that is gathering dust and you would like to donate it please contact Joyce Morrison at 250-248-5914 or Andra Thakur at 250-756-2652. In order to service the machines, get them ready for shipping, and allow time required for shipping, we need to receive them before the end of August. We would be delighted to pick them up at your convenience. **Please – only machines that are in good working order are needed.**

If you wish to make a donation or have any questions concerning this project you may contact Andra or Joyce at the above numbers.

INSPIRING FABRICS • PATTERNS & BOOKS • NOTIONS & GIFTS



Creative Quilting for All Life's Phases

Open Daily!

1689 Government Street at Fisgard

Phone: (250) 383-4023

www.satin-moon.com

20% off EVERYTHING*

EVERY TIME you shop at Satin Moon!

Sign up to be a

PREFERRED CUSTOMER by Aug 31, 2010

(*limited to regular priced merchandise only)

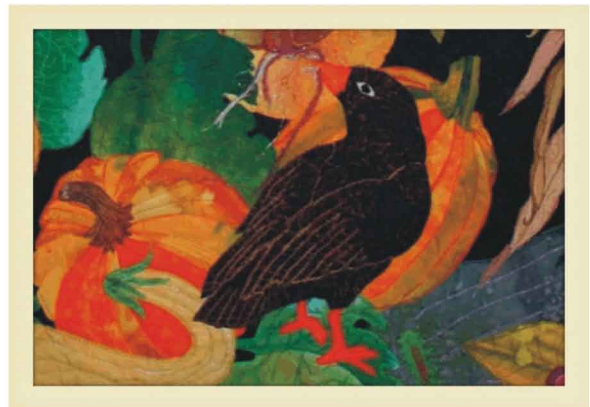
Visit us at the Nanaimo Quilter's Guild Show

June 18 - 20th

for an EARLY CHRISTMAS!

Harvest Quilt Studio

Long Arm Quilt Services



Carol Bailey

by Appointment Only

NANAIMO (250) 244-3655

www.harvestquilts.com



Make a Mug Bag for September!

The attached mug bag pattern is so handy to protect your mug while it goes back and forth to guild meetings, quilt bees, workshops, etc. The executive wants to offer all the members this pattern, and issue a summer challenge to you. Make a mug bag over the summer using this or any other pattern,

decorate it any way you wish, and at the September meeting we'll have a display of all the bags and a viewers choice ballot with prizes. Why stop at one, make one for every season, every month, or in different themes or colour schemes!

BASIC MUG TOTE PATTERN CQA/ACC October 1990

This Mug Tote will carry your favourite mug to all your meetings for you. Styrofoam cups will no longer be needed. The following directions are for a basic tote. Make your tote unique with patchwork, applique or embellishment.

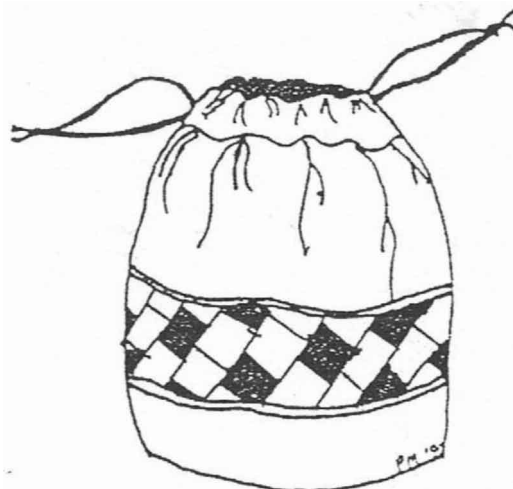
SUPPLY LIST

- 2 pieces of fabric 6" x 16.5" (one for the lining)
- 2 pieces of fabric 5.5" circles (one for the lining)
- 2 pieces of fabric 3" x 9" for the casing
- 1 piece of Thermalon 5.5" x 16"
- 1 piece of Thermalon 5" circle
- 2 pieces of matching cord each 21" long
- 1 plastic lid from a food container about 5" in diameter
- matching thread

INSTRUCTIONS

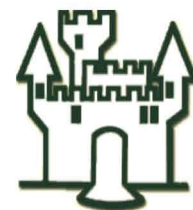
Use 1/4" seams throughout.

1. Baste Thermalon circle to outside fabric circle 1/2" from edge.
2. Sew up short end of the 6" x 16.5" piece for outside of tote.
3. Attach the above to the basted outside fabric circle.
4. Sew Thermalon strip to the lining strip (6" x 16.5") by machine stitching three rows of stitching lengthwise, joining both layers.
5. Sew up the short side of the lining strip and attach the lining circle.
6. Turn outside of tote right side out (piece made in steps 1-3).
7. Place the plastic lid into the bottom of the tote.
8. Turn lining piece (from steps 4 & 5) right side in and fit the two together.
9. Casing strips - On short ends, turn under raw edges 1/4" to wrong side and sew.
10. Fold casing strips in half and press. Press one raw edge of each piece to wrong side 1/4".
11. Sew raw edge of casings, right sides together, to top of tote, butting the edges of the two casings.
12. Turn pressed edge of casing to inside and slip stitch to inside to form a casing.
13. Insert cording into casing.



THE CLOTH CASTLE

786 Goldstream Avenue
Victoria BC V9B 2X6
Tel: (250) 478-2112
Fax: (250) 478-1050



Your One Stop Sewing Shop

Dress & Specialty Fabrics, Drapery & Upholstery Fabrics, Quilt Fabrics,
Sewing Machines & Sergers Sales & Service
Classes and Sew Much More.

Website: www.clothcastle.com Email: theclothcastle@hotmail.com