

Nanaimo Quilters Guild Newsletter

Volume 26 Issue 9 May 2010



www.islandquilters.ca



Next Meeting

May 19 Evening Only! ELECTIONS
Brechin United Church
Doors open at 6:30, Meeting at 7:00

Next Executive Meetings

May 13 (1:30), June 10 (1:00)
Country Grocer, Southgate

Next Quilt Show Meetings

May 20 1:30 p.m. Country Grocer
June 3 noon potluck meeting at Avril Valentine's

Newsletter Deadline

May 22 (22nd of each month)

Things to Remember:

- name tag
- **your own cup!!! Please!**
- raffle tickets & money!
- completed Challenge postcards
- library books
- donation placemats/quilts/show & share
- change for raffles, buying books
- block of the month (for May)
- newsletter
- baking or store bought goodies
(if your surname starts with S,T,U,V)

If you have something of interest for our Guild website, please send it to Avril Valentine at avrilvalentine@shaw.ca who will forward it to our web master.

Membership/Hospitality

Please stop at the Hospitality table when you arrive, sign in, and pick up your ticket for the name tag draw. **You must be wearing your name tag in order to win the draw.** Please sign out if you leave before the end of the meeting.

Yummy Baking ...

Thanks to everyone who brings goodies for our meetings. **For May, it's the turn of everyone with a surname beginning with S, T, U, V.**



June 18-20

**Beban Park
Recreation Centre**

Nanaimo, BC

2010 QUILT SHOW 1 month to go!

From Our Presidents' Pens

We keep hearing spring is just around the corner. Does anyone know just which corner that is? We have been walking around in circles and can't find the corner!!!

We heard a little quote the other day by Malaak Compton-Rock: "Service to your community is the rent you pay for living". We thought it was appropriate for this newsletter as we are still looking to fill some executive and committee positions for the upcoming term. Have you paid your 'rent' to the Guild this year? We are referring to your *time* donation to the running of such an active Guild, with many activities provided for your enjoyment. We hope you will take a wee step forward to lend a hand at election time. After our April Guild meeting we only have 3 or 4 spots to fill. **WAY TO GO GIRLS!!!! Thank you - thank you - thank you.** To volunteer contact: avrilvalentine@shaw.ca or rootco@shaw.ca

The Quilt Show Committee has worked extremely hard for a successful "Material Magic Quilt Show", June 18, 19 and 20. What an effort by every committee member! Your Guild Executive sends a huge thank you to each and every one of you for your commitment of time and energy. We still need more volunteers for the show itself - so listen carefully for your phone to ring. When Bonnie Dimitry calls just say "Oh, sure, no problem I will help with that". ☺☺

Norma Franks will be staying on as your President next year and Barbara Root will be stepping down and serving as Past President. We both thank you for your continued support and encouragement during this past year that we have been in office. *Sincerely, Co-presidents Barbara Root and Norma Franks*

Notices of Motion for May 19, 2010 meeting

The following two motions will be presented to the membership for discussion and voting by ballot at the Nanaimo Quilters' Guild May 2010 meeting.

Motion: That the membership fees be increased to \$30.00 per member, effective September 2011.

Motion: That effective September, 2010 regular members who wish to have their newsletter mailed to them:

- pay an additional \$10 per year or b) provide the Newsletter Committee with 10 self-addressed, stamped envelopes 7 of which have a regular priced stamp affixed (current rates \$.57 each), and 3 of which have an overweight stamp affixed (current rates \$1.00 each)
- There will continue to be no mailing cost for honorary members.

ELECTIONS take place at our Annual General Meeting on May 19. ALL POSITIONS ARE CONSIDERED OPEN. Volunteers have offered to take some of the positions but nominations will also be taken from the floor.

EXECUTIVE AND COMMITTEE CROSS-OVER MEETING: Outgoing and incoming executive, committee chairs and committee members are invited, and encouraged, to attend our "Cross-Over" meeting, **June 10** from 1:00 to 3:30 in the upper meeting room (door near snack bar) at Country Grocer, 82 12th Street. Call for directions if you are unsure of location. Passing over of binders to new committee members, and Treasurers Carol Bailey and Linda Totzke will distribute forms, and explain what they require from you. Please try to attend, and bring your updated binders

RETIRING COMMITTEE MEMBERS: Please return your binders to Norma or Barb at the May Annual General Meeting after you have inserted any new or updated information. Thank you.

NQG Box 943 Nanaimo BC V9R 5N2 Editor suecreba@aquariusd.com



QUILT SHOW PAGE

**The Mayor of Nanaimo has officially declared
June 14 to 21, 2010 as Quilt Week!**

Quilt Show Report

We would like to extend a big thank you to all Committee members for doing a terrific job during these past two years. Everything is coming together quite nicely and we are hoping for a very successful show. Volunteers are very important and we hope that you will all sign up for duties during the 3 days of the show. We would like to clarify the eligibility requirements for the Quilt Show.

NEW MEMBERS: You must have signed up for membership in September, 2009. Sometimes we extend that to the October Guild meeting. Because we did not have a formal meeting in October (we celebrated our 25th Anniversary) we extended this deadline to November Guild Meeting 2009. If you joined our Guild by November 2009, you are allowed to enter a quilt in the show. You are also entitled to put items for sale in the Guild Boutique.

RENEWING MEMBERS: memberships should have been renewed in September or October 2009. Again, since we did not have a meeting in October, we expect that most memberships would be renewed by November 2009. However, there are some circumstances that have prevented a few members from renewing before this date and they wish to enter a quilt in the show. Carol and I have discussed this matter and we both concur that if you have been a member in good standing in previous years and your membership was not renewed by November, you need to contact us and we will make a decision on an individual case basis. If ANYONE has any questions or concerns regarding this issue, please feel free to contact me or Carol.

Lillian Charron 250 245 8345 meme150@shaw.ca

Carol Bailey.250 244 3655 carol.bailey@hotmail.com

Spread the Word about the Quilt Show

Word of mouth is still the #1 method of attracting people to our Quilt Show.

Everyone is encouraged to talk to their family, friends, neighbours, colleagues and invite them to come to our quilt show. Send them a few emails to remind them and put the Quilt Show on your Facebook if you have an account. Give them the dates and times.

When you are selling your Raffle tickets, invite them to the show. Put the Show Poster you brought home up in the highest traffic area in your neighbourhood. **Each member can make a difference in our attendance at the show.**

Show Volunteers

Just a quick note on the volunteers for the show. If you have a husband, friend or family member who will be helping out at the show, please call me at 250-756-3254. I will add their name to the master list and will print out an ID badge for them (it will get them into the show for free). Thanks, *Bonnie Dimitry, Show 2010 Volunteer Coordinator*

The Challenge End is Near!

The time has come to put the finishing touches on those fabulous postcards that you have been making. Please bring them to me at the May Guild meeting on May 19. They will be unveiled at our Quilt Show in June. Remember there are no limits to the amount of entries that you can submit. Please review the ground rules and make sure that you meet the criteria. I am really looking forward to seeing the incredible talent that we have in our Guild and showcasing them for our visitors. Good Luck! *Lorie Rogers*

QUILT SHOW RAFFLE

PLEASE HAND IN ALL QUILT RAFFLE TICKETS AND MONEY TO LAURA MORRISSEY OR VAL URSULAK AT THE MAY GUILD MEETING.

Thank you to everyone who helped to make our Quilt Raffle a success!!

Quilt Show Boutique

Are you interested in making some extra money (to buy more fabric)? Well then, get those machines oiled and revved up. The Boutique is looking for good quality, handcrafted, sewing related items, less than 2 years old to sell at our quilt show. The Guild will deduct a 15% commission from the asking price....BUT you get the other 85%!

Here are some of the categories: Christmas related (ornaments, tree skirts, stockings, etc.), Baby items (quilts, toys, pillows, wall quilts, etc.), Kitchen items (table runners, placemats, tea cosies, coasters, etc.), Bedroom items (quilts, throws, pillows, etc.), Clothing items (jackets, vests, skirts, bags, accessories, etc.), Miscellaneous items (art quilts, pincushions, book covers, etc.)

Please read the Inventory Sheet published in the February newsletter for more details. You must be a paid up guild member before the end of November 2009 and must volunteer time to work at the show to enter items for sale in the Boutique. Thank you, *Janet Williams*



QUILT SHOW PAGE

Depot Captain Coordinator

Hello ladies! I will be doing a short presentation at the May meeting, but here is a heads-up on what I will be discussing. Please have your questions ready for me at the meeting.

Depot Captains (DC) will be contacting you after June 4th to let you know where to deliver your quilt show items. The DC closest to your home will have your call to entry forms after that date, and will give you details of how to drive to her home, and her home phone number. She will also arrange with you a time and date for delivering your items to her (sometime after June 7th, at a convenient time to both of you). Please note the DC will not be accepting entries after June 16th.

***Please remember that each quilt / art quilt must have a label sewn to its backing with your name, and a hanging sleeve (unless it is smaller than crib size, then no sleeve is required). A picture of yourself (if Avril has not taken one of you) and your article description should be safety pinned to the front of the item (upper corner).

When she has received your items, she will give you a signed receipt from the bottom of your Call to Entry form, which you will need to keep and present to pick up your items at the close of the show on June 20th. It is EXTREMELY important that EACH ITEM you bring to your DC has some kind of identification SEWN to it, including clothing, purses, accessories, etc. Please put your items in a CLEAR plastic bag (s), so that we can maintain their cleanliness and keep all of your entries together. Thank you all in advance for your attention to these details. *Lori Skerget*

PHOTOS FOR CALL TO ENTRY

Avril Valentine will be at the evening May meeting, to take photos of any members who have not had their photo taken, to be placed with their quilt entry (ies). Bring your best face!

Baking Needed for Quilt Show

A reminder to all Guild members that we need cookies, bars, cakes, and slices for the goodie plates for the quilt show. We will need these for the Friday, Saturday and Sunday of the show. Your baked goods may be dropped off at the kitchen area at Beban Recreation Centre. *Mickey Lemmon*

ALL QUILT SHOW COMMITTEE MEMBERS

If you have been working on a Show Committee for the past two or three years you will be given a special ballot that entitles you to vote for your "favorite quilt" in the 2010 Quilt Show. Barbara Root rootco@shaw.ca will be handing out ballots to all Quilt Show *Chairmen (or designate)*, who will in turn distribute the ballots to their committee members. Please ensure you receive your "Quilt Show Committee Ballot" at the May Quilt Show meeting, the May Executive meeting or at the May AGM. You will only be given one ballot – so don't lose it

Placemats for Quilt Show

A reminder to all Guild members that we need your very best placemats for the tea room at the quilt show. Please bring them to the May meeting.



**Huckleberry's
Fabrics Inc.**
1930 Ryan Road East
Comox, BC, V9M-4C9
250-339-4059
1-877-339-4059 Toll Free
e-mail : sewfun@telus.net

Bernina 830

The only, luxury, high-performance sewing and embroidery system in the world.



When you create on the BERNINA 830, your grandest ideas can come to life. That's because it offers the most sewing and embroidery space, unbeatable speeds, and the most advanced ergonomics of any home sewing machine. It's time to think bigger.

May/June Class Schedule Now Available
Call 1(877)339-4059 or
e-mail sewfun@telus.net
and we can e-mail you a copy



Program

Enrolment for the Fall Classes: Both classes have only 2 or 3 openings left. Kathy Bush: "Creating a Quilted Wall Hanging from a Photo" Two Sessions: Part 1: Sept 18, Part 2: Sept 25 or 26. Cost: \$70. Learn this fairly involved technique for turning your favourite photo into a quilted wall hanging! You will learn how to enlarge and create a pattern from your picture, and will then choose fabrics and appliqué layers onto a muslin backing. You should already have quilting experience, as this class focuses on the technique of pattern creation and machine appliqué. The instructor must approve your photo choice prior to class as some photos lend themselves to this technique more than others. This is a very rewarding method of creating your own original one-of-a-kind wall hanging!"

Barbara Shapel: Two one day workshops. Day One: "The Art of Machine Quilting" October 16. Cost: \$40. This is a beginner level quilting workshop where you will learn proper basting techniques, which machine needles to use with specific threads, and the differences between the various quilting threads that are currently on the market. You will then work on a practice sampler and learn how to stitch over a dozen free motion quilting stitches.

Day Two: "Thread Painting, Three Samplers" October 17. Cost: \$40. This workshop is for those who are comfortable with their stitching but would like to take it to the next level. Students will get started on three different samples: butterflies in a field, the head of a Great Blue Heron and the moon. Each of the



samples will be approximately 15" square when finished. Topics to be covered include what thread to use and when, the order of quilting, using a hoop, outlining, and transferring images to fabric and how to make the pieces two-sided. To see Barbara's work www.barbarashapel.com

Note: These are tentative dates: we need to wait until June to hear from Parks and Rec regarding our room reservations at Oliver Woods. If you are interested, please contact Lise Skalos at nqqprogramme.lise@shaw.ca or 250-754-9636.

Thank you to those who signed up to be "Angels" for the workshops. If anyone else is interested, please contact one of the Program Committee members.

Philippa Zapf, you provided us with a very entertaining trunk show. By showing us your evolution of skills over the years, it encourages us to keep experimenting with new techniques.

Just a reminder that at the beginning of our May meeting, which is only an evening meeting (Elections), Bruce Sharock will present an overview of a Cruise Shop Hop to Hawaii.

Your Program Committee: Angela McKenzie, Lise Skalos, Sandy Radley, Sue Thurmeier, Bonnie Dormuth, Caroll Rumo



Sweet Pea Quilting

25 Roberts Street, Ladysmith,
British Columbia, Canada
V9G1A2

www.sweetpeaquilting.ca
Email: sweetpea.quilting@shaw.ca
Telephone: 250-245-2114

Long Arm Quilting

See us for your machine quilting needs.

- Quick 2 week turnaround
- Computerized and custom quilting

We also carry a fabulous selection of current fabrics, threads, notions, patterns and books.

Just 1/2 block off the Trans Canada Highway



SERGE & SEW



250-390-3602



105 Nored Plaza, 6750 Island Hwy., Nanaimo

Featuring fabulous Quilting fabrics,
Books, Patterns & Notions
Authorized PFAFF & Babylock dealer:
servicing & repairs to most
sewing machines & sergers.

Check our website
www.sergesew.com
for EVENTS & SALES!



August Workshops in Comox

The Textile Characters are presenting two workshops with Pamela Allen at Crown Isle Resort in Comox Wednesday to Saturday, August 4 through 7. You can see more about Pamela on her website www.pamelart.com

One-day workshop Wednesday August 4 "Fantastic Fabric Faces" Use unique fabrics: consider thrift store/garment fabrics with large prints to make small art quilts. A curling vine becomes an eye; a circle becomes a chin. Pamela provides fabrics printed with eyes, mouths etc. to help with the creations. Emphasis on the creative process with less fuss about sewing techniques and traditional quilting methods.

3-day workshop Thursday-Saturday August 5-7 "What Makes a GOOD Composition?" An ongoing exploration of Art Quilting. When crossing the line from traditional to art quilts, considerations such as style, content, formal elements and composition come to the fore. These characteristics are more ephemeral and difficult to define, requiring time and practice to reach that confidence of knowing what is good and what is not so good. This workshop is devoted to the fundamental challenge of what makes a pleasing composition. Exercises are designed to explore separate facets of composition through small quilt designs executed quickly and spontaneously. The class will also touch on the formal elements of a composition, the expressive capabilities of colour and the narrative possibilities of an image. (No sewing machine required- it's optional.)

For more information- please contact Ionne McCauley phone: 250-752-9604 or email: info@ionnequilts.com

Sisters Oregon Quilt Show 2011

The planning for the trip to Sisters, Oregon is well underway and the response at the April guild meeting was excellent.

The dates for this trip are from Thursday, July 7 to Monday July 11, 2011 (the actual quilt show is all day Saturday). Our trip will include: ferry, bus, four nights accommodations and four breakfasts and we calculate the maximum charge will be \$450 per person based on double occupancy. We need a minimum of 36 participants to make this trip viable and have a maximum of 44 seats available. We require a completed registration form (see us at the May meeting) and a deposit cheque (or credit card) to the Nanaimo Quilters' Guild in the amount of \$300. The balance of payment is due by the May 2011 guild meeting and this amount is dependant on the final number of participants, the cost of US dollars, next year's transportation costs and the impact (or not) of the HST- we will let you know the final price early in 2011.

Our guild members have first dibs until September, however, you can register a friend/family member with whom you'll be travelling now; in September, any open seats will be offered to other guilds and groups.

Anyone going must have a CURRENT PASSPORT. The expiry date must extend 6 months beyond the date of travel to the US - that means it has to be valid until mid January 2012. The cost of the trip does not include: cancellation, medical insurance, meals (except for breakfast), passport and associated costs and personal expenses. Any specific questions should be directed to Bonnie Dimitry and/or Sue Artuso, your trips and retreat gals.

The Cumberland Quilt Shop

We will be celebrating our
2nd birthday on June 1st.

30% off

All fabric • All thread including Mettler cotton, YLI silk and metallic

30% off DVD's from Nine Patch Media

Sale runs from June 1 until June 5, from 10 am to 5 pm

Visit us at 3314 7th Street Cumberland

Phone: 250-336-2624

www.cumberlandquiltshop.com



Library News

This month we will be selling off discarded magazines & books at the May meeting so bring your spare change. Magazines for a quarter, books fifty cents. We need to make room for newer materials.

Please try to get ALL your materials back for the May meeting so we don't have any "hang-overs" over the summer. Remember all materials taken out in May will be due in September...so stock up on your reading materials.

Our Guild's Library Book Collection is now posted on our website...be sure to check out our list.

Have a great summer everyone! *The Library Team*

Food Bank

Once again I took a great assortment of food donations to Loaves and Fishes Food Bank. You are really great members who rise to the occasion whenever you can, whenever you are asked, and I am proud to belong to the same guild as you. Looking out at you all from the stage at our meeting and watching all those writing their names on the nominations board as they waited in line for coffee I thought, life is good. This month's suggestions should you wish purchase them are Hot Chocolate and/or Crackers. But, our old friend the pantry shelf is always willing to let you have an item or two and we love that. Thank you, *Norma Franks*.

March Raffle Winners

Mystery Fabric: Day: Dianne Ross Evening: Carole Dorward
Raffles: Day: Patricia Jones, Dana Roncin (2), J. Williams, Judy Peterson, Nancy Phillips, Sandra Becker, Georgette Serjeant, Robin Flynn, Sue Creba.

Evening: Angela McKenzie, Marlene Jones, Sandra Radly, Heather Henderson, Val Ansel, Penelope Woodwark.

Door Prize: Day: Fran Nicklom Evening: Penelope Woodwark
Show and Share: Day: Bertha Abma, Lois Anderson Evening: Barb Peters

Block of the Month : Norma Franks (those concerned with web privacy have only their initials included)

Thanks to Carol Rumo, Philippa Zaph, Georgia Zieglemeier, Florence Dorscheid, Shirley Fulla and Cindy's Threadworks for donating prizes!

THE Stitcher's Muse
NEEDLE ART
Classes • Books • Charts • Fibres • Fabrics • Supplies
#7, 70 Church Street
Nanaimo 250-591-6873
www.thestitchersmuse.com

Kismet Quilts
5334 Argyle Street
Port Alberni
V9Y 1T8
250-723-6605
Monday-Saturday 10 am - 5 pm

www.kismetquilts.com

Long Arm Quilting Services, Fabrics, Notions, Books, Gifts, Large Selection of Wide Goods, Classes

Snip & Stitch SEWING CENTRE
Discover the world of sewing!
"Wander through our store for a refreshing experience"

Summer Fun Open House

June 4, 5 & 6
Friday 9-9, Saturday 10-6
Sunday 11-5

Come join us for summer sales, fun specials and a fantastic barbeque.

3 IN 1 DEMO DAY WITH JULIE
Explore Liquitex Art Basics
Saturday May 29
3 classes available
Between 10 & 3:30
Price starts at only \$5!
Limited Seating Register Now!

Snip & Stitch Sewing Centre Ltd. is located at:
#1-4047 Norwell Dr., Nanaimo BC, V9T 1Y6.
Phone us at 250-756-2176 or 1-800-789-1730
www.snipandstitch.com



Nanaimo Quilters' Guild Election 2010

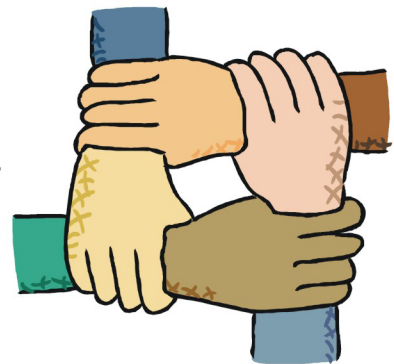


Your Guild needs YOU!

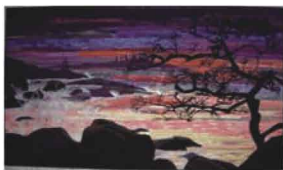
Ladies, it's that time of year again - the time when people decide to offer their services to the Guild, the community of quilters in which we are all lucky enough to participate!

If you wish to let your name stand for election to the Guild Executive for 2010 please let us know. As always, at the AGM, nominations will be accepted from the floor.

Please remember that a load shared is a load halved, and consider working with a partner. It really makes the commitment a lot easier! *Barb & Norma*



Remember, we are all in this together!



Coreen Zerr
Quilt Designer
and Instructor

36 48 Glen Oaks Drive
Nanaimo, BC V9T 5L3

Phone: 250-756-1683
Cell: 250-619-7060

Corsew Designs

*For Spring 2010 classes offered in my
home studio, guilds, and quilt shops,
please check my website*

www.coreenzerr.com

e-mail:
corsew@shaw.ca



BIB n' TUCKER QUILTING

May Sale

All **floral** textures
and **floral** prints

25%-35% off 2m + (same bolt)

1/2 m minimum cuts

**Closed Sat May 15 see us at
our triple booth at the
Victoria Quilters Guild show**

343 D Bay Street (at Turner) Victoria BC
(Lower Rear GRAVEL YARD parking lot)
386-6512 (Mon-Thurs 10-4, Sat 12-4)



FREE ITEM

The Guild has an old 14' quilt frame in storage that we would like to get rid of it. If you see a reason not to get rid of it, or if you would like the frame, please contact either Norma alanandnormafranks@shaw.ca or Val Ursulak jursulak@shaw.ca to make arrangements to pick the frame up.

COMFORT QUILT SOCIETY

We have an opening for a Vice-President of the Comfort Quilt Society. If you would be willing to serve in this capacity please contact: Patty McRory pamcrory@shaw.ca

THANK YOU

To Linda Addison for typing up the list of Library books and Sue Creba for formatting the lists for our website.

DONATION QUILTS

All quilts donated to any organization or person should go through the Donation Quilt Committee. Committee members will fill out the necessary paperwork to submit to the Comfort Quilt Society. Anyone requesting donations should apply in writing, and if they have a "charitable number" that should be included in the request.

Keep your Eyes and Ears Open

We may require a new Guild meeting venue. It has come to our attention that Brechin United Church **may be** having playschool/kindergarten weekdays in the church hall. This would pose a problem with the Guild meeting set-up and take-down times. We can't find a bigger venue - can you?

CREATIVE QUILTING

Darlene Potts

102-5869 York Road, Duncan, BC V9L 3S3
Phone: 250.746.8033 Fax: 1.866.847.8629
creativequilting@telus.net

Cindy's Threadworks

<http://www.cindysthreadworks.com>

Choose from the Largest Selection of Superior Threads in Canada

EARLY BIRDS Shop On-line/Pick Up@
NQG Material Magic Quilt Show
Merchant Mall, June 18-20

Phone: (250) 738 0560
Email: cindysthreadworks@telus.net



Only a few spots left!

Quilt Cruise to Alaska
September 11-18, 2010

Holland America's Zuiderdam
Round Trip from Vancouver

*Sewing machines provided by
Sawyer's Sewing Centre*

patch
works
studio

Details on our website - or give us a call
www.patchworkstudio.com
email: patchworkstudio@shaw.ca
phone: 250-595-4411

GRAMMA'S
QUILTING CUPBOARD
Fabrics • Patterns • Notions • Classes

Ph: (250) 248-8449 P.O. Box 606
Fax: (250) 248-8451 #1-180 Craig Street
Marian Whitney Parksville, B.C. V9P 2G7

grammas_quilting_cupboard@shaw.ca
www.grammasquiltingcupboard.com



Minutes of April 21, 2010 General Membership Meeting

Meeting called to order at 1 pm by Co-President Norma Franks.

Hospitality: Hostess Ingrid Morton welcomed Trudy Simon.

Minutes: The minutes were approved as circulated in the newsletter.

Correspondence: The new location of our Postal Station is 140 Terminal Ave, Gary Carleton of the Red Cross thanked us for our donation of 19 quilts for the Cowichan Relief Effort. Norma received an offer of a quilt stand from Katherine Daoust of Malaspina Gardens, which will be used at our Quilt Show. A "Thinking of You" card was sent to Dona-Mae Bauer and a sympathy card sent to the Corfield family at Huckleberrys on the death of their mother.

Treasurer's Report: Carol reported that we have \$11,074.20 in our Credit Union Account.

COMMITTEE REPORTS:

Challenge: Lorie reminded members to have their Challenge postcards in by the May meeting.

Coffee: We have purchased a new small urn for the Coffee Committee.

Fabric Exchange: Please let Buelah Friesen know if you are interested in a Fabric Exchange for the next year, otherwise it will not happen.

Library: Our annual Book and Magazine Sale will be held at the May meeting. Books taken out at that time will not be due until September.

Program: Caroll Rumo put a call out to members to volunteer to give mini-demos in the Fall. She asked for a committee to be formed to look after a Garage Sale next year. Kathy Bush volunteered to head that committee. Angels will be needed to assist in the workshops next year. Registrations were taken for Kathy Bush's and Barb Shapel's workshops in the Fall.

Quilt Show: Lillian reminded members that we ALL need to lend a hand and sign up for the numerous jobs to make this a successful show. Bonnie Dimitry will be calling you if you

haven't signed up yet. Be sure to take a book of tickets to sell, even if you need to buy the book yourself. Val Ursulak needed (and got) enough volunteers to help sell tickets at Woodgrove on May 21 and 22. **ALL TICKETS AND MONEY MUST BE HANDED IN AT THE MAY GUILD MEETING.**

Trips and Retreats: Sue Artuso outlined the plan and cost for a bus trip to Sisters, Oregon in July, 2011. See report in newsletter for details.

NEW BUSINESS: The executive have discussed and put forward this NOTICE OF MOTION: That the membership fee be increased to \$30.00 per member per year, effective September 2011. The motion will be discussed and voted on at our May meeting.

A NOTICE OF MOTION was also put forward regarding raising the newsletter fee for those receiving the newsletter by mail. This will be discussed and voted on at the May meeting.

Nominations: Co-President, Barb Root read out the positions still to be filled for our Election in May. Have YOU volunteered to help out YOUR guild next year?

PROGRAM: Philippa Zapf presented a beautiful and humorous Trunk Show!



Little Mountain Studio.



Stitched textiles, lectures, workshops.

For more info contact

Judy Farrow at 250 954 3797 or

judyfarrow@shaw.ca



phone: 250.537.8985

Creativity@StitchesFibreArtSupplies.ca

www.StitchesFibreArtSupplies.ca

127 Rainbow Road Salt Spring Island, BC V8K 2V5



Quilt Shows

Lions Gate Quilters' Guild, 10th "Album of Quilts" Fri. June 11 9-7, Sat. June 12 9-5 Admission \$6, children <12 free. Delbrook Community Centre, 600 W. Queen's Road (Delbrook/Westview), North Vancouver 17 Merchants! Tea Room, 200 quilts, raffle quilts www.lionsgatequiltersguild.com

The Grand National Quilt Show May 8-June 13. Homer Watson House and Gallery, 1754 Old Mill Road, Kitchener, Ontario

Gibsons Landing Fibre Arts Festival Aug. 19-21. Workshops, Juried Exhibit and Sale, Merchant Mall, Artisan Market. Contact www.gibsonslandingfibreats.com

2nd Annual "Quilts at Tanglebank Gardens September 11 10-4, 29985 Downes Road, Abbotsford. Meet designers Cheryl Wall: Country Quilts, Sue Jensen: Quilted Escapes, Pippa Moore: Kitambaa Designs, Dougal Ann Walker: The Freckles Collection. Quilts, patterns, fabrics, wool, kits, a designer's challenge, specialty booths and refreshments. Contact Cheryl countryquilts@shaw.ca or 1-604-855-0834

Blue Mountain Quilters' Guild "Quilts Galore", October 16-17 Saturday 10-5, Sunday 10 - 4 Montgomery Middle School, 1900 Edgewood Avenue (just south of Austin Ave) Coquitlam www.bluemountainquilters.ca

SATELLITE GROUP

We have a new satellite group in Nanaimo, who call themselves the "Nimble Thimbles". The Nimble Thimbles meet every second Thursday at the Highlands Club House. They can accommodate two more members for anyone interested. The members are: Grace-Ellen Capier, Barb Hallum, Dona-Mae Bauer, Sherry Drebnicki, Linda Campbell and Elaine Evans. Contact Grace-Ellen at: capiers@shaw.ca

MUG BAG

Watch for the June newsletter for the pattern to make a mug bag to carry your coffee cup, and a contest with prizes for the best ones in September.

THE CLOTH CASTLE

786 Goldstream Avenue
Victoria BC V9B 2X6
Tel: (250) 478-2112
Fax: (250) 478-1050



Your One Stop Sewing Shop

Dress & Specialty Fabrics, Drapery & Upholstery Fabrics, Quilt Fabrics,
Sewing Machines & Sergers Sales & Service
Classes and Sew Much More.

Website: www.clothcastle.com Email: theclothcastle@hotmail.com

INSPIRING FABRICS • PATTERNS & BOOKS • NOTIONS & GIFTS



Satin
Moon

Quilt Shop

Creative Quilting for All Life's Phases

Open Daily!

1689 Government Street at Fisgard

Phone: (250) 383-4023

www.satin-moon.com

20% off EVERYTHING*

EVERY TIME you shop at Satin Moon!

Sign up to be a

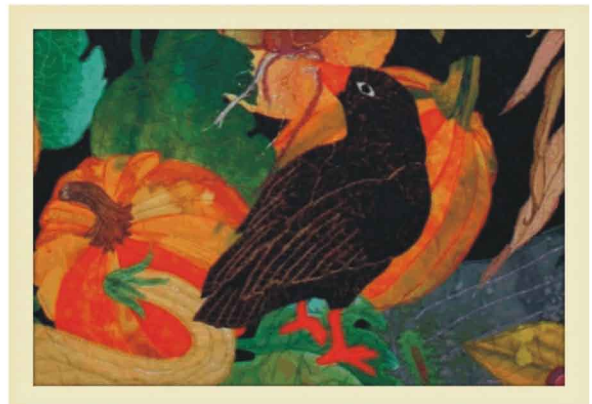
PREFERRED CUSTOMER

(*limited to regular priced merchandise only)

Visit us at the VQG show May 14 - 16
in the barn & downtown for Special Surprises!

Harvest Quilt Studio

Long Arm Quilt Services



Carol Bailey

by Appointment Only

NANAIMO (250) 244-3655

www.harvestquilts.com