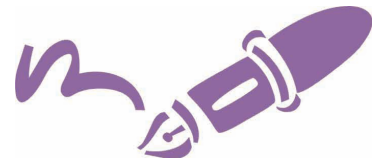


Nanaimo Quilters Guild Newsletter

Volume 26 Issue 8 April 2010



www.islandquilters.ca



Next Meeting

April 21, 2010

Brechin United Church

Doors open at 12:30

Meeting starts at 1:00 and 7:00

Next Executive Meeting

April 15 7:00 p.m.

Country Grocer, Southgate

Next Quilt Show Meeting

April 8 1:30 p.m.

Country Grocer, Southgate

Newsletter Deadline

April 22 (22nd of each month)

Things to Remember:

- name tag
- **your own cup!!! Please!**
- completed Call to Entry(s)
- library books
- donation placemats/quilts/show & share
- change for raffles
- block of the month (for April)
- newsletter
- baking or store bought goodies
(if your surname starts with O,P,Q,R)

If you have something of interest for our Guild website, please send it to Avril Valentine at avrilvalentine@shaw.ca who will forward it to our web master.

Membership/Hospitality

Please stop at the Hospitality table when you arrive, sign in, and pick up your ticket for the name tag draw. **You must be wearing your name tag in order to win the draw.** Please sign out if you leave before the end of the meeting.

Yummy Baking ...

Thanks to everyone who brings goodies for our meetings. **For April, it's the turn of everyone with a surname beginning with O, P, Q or R.**



June 18-20

**Beban Park
Recreation Centre**

Nanaimo, BC

2010 QUILT SHOW 2 months to go!

From Our Presidents' Pens

Welcome back members who have been dealing with health or family issues - we have been thinking of you with great concern and have missed each of you. And welcome home snowbirds - we hope your engines are revved for the upcoming Quilt Show that we have been working so hard to produce, and that you will offer your services, as we still have volunteer spots to fill.

2010-2011 ELECTIONS: Nominations and **May Elections** are fast approaching. We would like to thank the many Guild members who are willing to let their names stand for the upcoming term. We thank all who have fulfilled their duties over the past term(s) and are now stepping down. The Guild would not be as successful without contributions from so many. We have the following positions open for the upcoming term: 1st Vice Chairman, 2nd Vice Chairman, Evening Chairperson/Sec., Christmas Pot Luck, June Picnic, Coffee (lots), Donation Quilts (afternoon), Newsletter Advertising, Program (understudy), Afternoon Raffles (1 from Duncan area if possible), and Membership (evenings). Thank you to the **NEWBIES** who have offered services already as that is the best way to enjoy getting to know other members. We ask that you consider how you could assist the Guild and email Avril avrilvalentine@shaw.ca Barb rootco@shaw.ca or Norma alanandnormafranks@shaw.ca and offer to fill one of the many vacancies.

MATERIAL MAGIC QUILT SHOW: This show is not a Juried and Judged show. It is not meant to be a competition. It is meant to be a huge Show and Share. It is a time we can all enjoy the work of our peers. Oldies and Newbies are all encouraged to enter. Be proud to enter your work. Over the years you will see where you came from and what you can achieve with continued effort. In your description on the "Call to Entry" (due by **April 21st**) let us know: if this is your first quilt; who you made the quilt for; what techniques you used; what inspired you; what you want to learn next. We are all interested in you and your work. We are proud to call you our Guild members. Let's show the world what **ALL** of us have accomplished. Laura Morrissey will collect "Call to Entry" forms (with photos attached) until Lorie Rogers returns from California. The photos and descriptions of your quilt(s) help the hanging committee decide which colors and sizes look best in which areas. Please contact Avril Valentine at the April or May afternoon meeting or at the April evening, to have your photos taken. These are placed next to your quilts at the show.

REFRESHMENTS: We are guests of Brechin United Church and rent the facility to hold our meetings. We have the use of the kitchen but not the dishes. We ask that if you wish to have a cup of coffee or tea, you **BRING YOUR OWN MUG**, then take your mug home after the meeting, wash it and pack it up for the next meeting.

The Nanaimo Quilters' Guild can be very proud of their donation of **19 quilts** to the Red Cross Disaster division taking care of victims of the flooding in the Duncan area. What an effort girls!!!! Gary Carlton and associate were absolutely thrilled with this contribution, they didn't expect such generosity. *Co-presidents Barbara Root and Norma Franks*

Found: at the March evening meeting, a shawl type woven grey-green scarf. Please contact Val Ansell 250-758-1185

Needed: We need volunteers to sell raffle tickets at Woodgrove Mall on Friday and Saturday, May 21 and 22. The hours are Friday 9:30 a.m. to 9:00 p.m. and Saturday 9:30 a.m. to 6:00 p.m. If you and a friend would be willing to give us 2 hours of your time on either of those days, we would appreciate it. Call or email Val, 250 758-3056 jursulak@shaw.ca and choose your time.

NQG Box 943 Nanaimo BC V9R 5N2 Editor suecreba@aquariusd.com



QUILT SHOW PAGE

Quilt Show April Report

Time is passing and before you know it, the Quilt Show will be here! I am sure that most of you are working hard finishing your quilt or that special project for the show. We want to encourage everyone to enter something in the show. It is not a competition - but a chance to show the public what our Guild members are doing. We certainly want to encourage all new members and those who consider themselves novices to enter something in our show. **Everyone who enters a quilt in the show will be eligible to have their names placed in the daily draw.**

Eligibility: You must have been a paid-up member of our Guild since September 2009 to enter a quilt in the show. Since we had no meeting in October (our 25th Anniversary Party), we are allowing Members who did not get a chance to renew their membership in September, but who did so in November, to enter items for sale in the Boutique (Boutique forms were in the February newsletter and you can print as many as needed).

Pictures: Avril Valentine took pictures of members at the March Guild Meeting. She will also take photos at both April 21 meetings. These pictures will be placed beside the quilt so viewers can see who made the quilt. This is a personal choice, not a requirement.

On Sunday, June 20, all entrants will be invited to come to the quilt show and stand beside their quilts and answer any questions the viewers may have or give a little presentation about the quilt. Again, this is strictly voluntary and is not a requirement of the Show. It is an added feature that many show attendees really appreciate.

Depot Captains: the depot areas are mapped out and Depot Captains are still needed in some areas. The job is fairly simple. You would be required to accept the quilts in your designated area. The members would bring their quilts to your home with the required documentation and properly packaged. You will be given all instructions at the time of volunteering for this position. You then need to deliver these quilts to Beban Park on Thursday June 17, the day of the set up. You will also be required to assist in distribution of the quilts the last day of the show, at Beban Park. If we have enough volunteers, it goes very smoothly. It is imperative that we get these vacant positions filled as soon as possible. Please contact Bonnie Dimitry if you think you might be interested and want to know more about this job.

Volunteers: we have been taking names for volunteers for all the Committees for the Quilt Show. There are still many positions available. Bonnie Dimitry will be contacting everyone that has not signed up for at least 2 hours of service during the show. It takes a lot of volunteers to assist the Committee members who have taken on these individual tasks. These Committee Members work hard to put on this quilt show, but

we cannot do it without the help of all members of the Guild. Most of us spend all 4 days at the show and I am sure that a lot of members plan on taking in the show, and this would be a great opportunity to help the Committees.

If you have any questions regarding the Show or the Committees, please feel free to contact us at anytime.

Lillian Charron 250-245-8345, Carol Bailey 250-244-3655

Quilt Show Call for Entry

IT'S TIME! Who would have thought that the time could fly by so fast? The Call for Entry forms are due at the April 21 Guild meeting (they in were in the March newsletter). You will need to fill out one for each quilt you are entering. Is your picture of your nearly or fully completed quilt attached? Note: The item does not have to be finished at this time, but a picture is required to enable the Quilt Hanging Committee to have an idea where to place the quilt and what it will look like.

Are all the lines on the form filled in? Did you pick the correct category? Have you finalized the 75 words or less that will be used for the public to read about you and your journey to complete your work of art? I will be there to receive your entries at both meetings. If there are any questions please email me at lorie.rogers@gmail.com

PHOTOS FOR CALL TO ENTRY

We plan to have a photo with each quilt in our upcoming Material Magic Quilt Show. Avril Valentine will be at the April meeting, afternoon & evening, and the Evening Only May meeting, to take photos of the members. Bring your best face!

Library Quilt Displays

We need your quilts for the library displays in May! We will be hanging quilts in the downtown library, and displaying small items in a glass case at the Wellington Library for the month of May. Quilts for the downtown library need hanging sleeves and rods.

If you have items that you are willing to display, please contact Gail Lambourne 758-9292, Marg Carmichael 758-4729 or Sandy Dobson 758-6149. We need the items by the April Guild Meeting - forms must be filled out for each quilt. We are not sure how many quilts we can fit into the library, but hope to be able to display all that you bring.

Wanted for Quilt Show

We need cash boxes for our quilt show in June. The Guild has a couple and we already have a couple of loaners lined up. However we still require at least two more. So if you happen to have a cash box stored away that you are willing to lend out, please let me know. You may phone me at 250-758-7922 or e-mail coperry@telus.net Thanks. *Corinne Perry, Treasurer*



QUILT SHOW PAGE

RAFFLE REPORT

SELL, SELL, SELL - that's our theme! We need volunteers to sell tickets at Woodgrove Mall on Friday and Saturday, May 21 and 22. The hours are Friday 9:30 a.m. to 9:00 p.m. and Saturday 9:30 a.m. to 6:00 p.m. If you and a friend would be willing to give us 2 hours of your time on either of those days, we would appreciate it. Call or email Val, 250 758-3056 jursulak@shaw.ca and choose your time. Val and Laura will be at both day and evening meetings in April and at the evening meeting in May to collect your money and tickets. ALL TICKETS AND MONEY MUST BE HANDED IN BY THE MAY MEETING. We need lots of volunteers at the Quilt Show to take a 2 hour shift to sell tickets (this is a lovely way to have a nice "sit down" job) Be sure to sign up at the next Guild meeting. *Val Ursulak and Laura Morrissey*

Quilt Show Boutique

Are you interested in making some extra money (to buy more fabric)? Well then, get those machines oiled and revved up. The Boutique is looking for good quality, handcrafted, sewing related items, less than 2 years old to sell at our quilt show. The Guild will deduct a 15% commission from the asking price....BUT you get the other 85%!

Here are some of the categories: Christmas related (ornaments, tree skirts, stockings, etc.), Baby items (quilts, toys, pillows, wall quilts, etc.), Kitchen items (table runners, placemats, tea cosies, coasters, etc.), Bedroom items (quilts, throws, pillows, etc.), Clothing items (jackets, vests, skirts, bags, accessories, etc.), Miscellaneous items (art quilts, pincushions, book covers, etc.)

Please read the Inventory Sheet published in the February newsletter for more details. You must be a paid up guild member before the end of November 2009 and must volunteer time to work at the show to enter items for sale in the Boutique. Thank you, *Janet Williams*

**Postcards from the Past
~ 25 Years of Quilting ~**

"I'm Late!, I'm Late for a very important date" so said the White Rabbit from Alice in Wonderland. The deadline is looming (the May 19 Guild Meeting) to hand in your mini pieces of art. Please note: These postcards do not need an entry form as you will have put your name, guild number and address in the "TO" portion of the postcard and a story in the "FROM" portion. See the Postcard back on page 12 that you can print out on cardstock. There were some blank backs available at the last Guild meeting for those without printer and computer capabilities. Keep the guidelines in mind 4" x 6" with three layers: a front, Timtex or a stiff material inside and the postcard back held together with stitching around the edges. Judging will be at the Show. With all the hype about 3D and Alice in Wonderland you may try that as your Easter inspiration for yet another postcard entry. Remember there is no limit to the cards you can enter! Good Luck! *Lorie Rogers* lorie.rogers@gmail.com

FREE Publicity for the June Quilt Show

If anyone knows a newsworthy story about one of our quilters or something relating to quilting that the public would find interesting and entertaining and would possibly capture the attention of one of our newspapers, please contact Gail Lambourne. 250-758-9292 or email: gailsbiz@shaw.ca

To lure the papers into 'free' publicity we need stories/events. The more the better. Thanks a lot for keeping your ears and eyes open.

Youth Fabric Art

We are encouraging our members who have children or grandchildren to enter any of their fabric art in the show in June. Lois Gilbert and I have entry forms, etc. and we can be reached at 250-729-0455. Thank you so much, Betty Wright

DATE	AGENDA	PROGRAM
April 8	Quilt Show meeting	Country Grocer 82-12 th Street 1:30-4:00 p.m.
April 15	Executive meeting	Country Grocer 82-12 th Street 7 p.m.
April 21	Guild: Short business, Full Program	Nominations, Trunk Show by Philippa Zapf
May 13	Executive meeting	Country Grocer 82-12 th Street 7 p.m.
May 19	Guild: Full business Short Program	"ELECTIONS"
May 20	Quilt Show meeting	Country Grocer 82-12 th Street 1:30-4:00 p.m.
June 10	Executive meeting	Country Grocer 82-12 th Street 7-9 p.m.
June 17-20	2010 Quilt Show activities	No Picnic this year due to Quilt Show



Program

"Creating A Quilted Wall Hanging from a Photo" with Kathy Bush. WOW!!! This was a very successful workshop. Thank you Kathy Bush!! Everyone, including the Angels, learned so much. It was amazing to watch the pictures becoming a reality. We can't wait to see all the finished quilts. Kathy has offered to teach this again in September. Samples from Kathy's February class will be presented at the April meeting.

"Yellow Brick Road or Diamonds Dancing in Split Square" with Patty McRory was a GREAT success. Everyone learned lots of slick tricks, even the experienced participants. One of our beginner quilters felt that the class was very informative, interesting and inspired her to carry on. Thank you Patty!!

Karen Tottman from Stitches has such interesting and different items that we don't normally see in the other quilt stores. The mini quilt show was also enlightening as she shared with us how both she and Susan Paynter used the various threads, yarns, material, metallics. A great presentation.

GLORIA LOUGHMAN: "Landscape Mosaic" May 29 & 30. The Victoria Guild has space in this class. Price for non-members is \$170. If interested, contact Laura at a1d37001@telus.net

TREES RETREAT: Pearson College in Metchosin, June 11-13. The Victoria Quilters Guild is opening this event to non-members. Please go to www.victoriaquiltersguild.org/QITT2010.htm for information and registration. If you wish to contact Carol Stewart, the chairperson for more information about this event, please contact Angela, Lise or Caroll.

Workshops for Fall 2010

Note: These are tentative dates: we need to wait until June to hear from Parks and Rec regarding our room reservations at Oliver Woods. To date, we have two workshops for which you can register at the April and May Guild meetings:

September: Kathy Bush: "Creating a Quilted Wall Hanging from a Photo" Two Sessions: Part 1: Sept 18, Part 2: Sept 25 or 26. Cost: \$70. Learn this fairly involved technique for turning your favourite photo into a quilted wall hanging! You will learn how to enlarge and create a pattern from your picture, and will then choose fabrics and appliqué layers onto a muslin backing. You should already have quilting experience, as this class focuses on the technique of pattern creation and machine appliqué. The instructor must approve your photo choice prior to class as some photos lend themselves to this technique more than others. This is a very rewarding method of creating your own original one-of-a-kind wall hanging!"

October: Barbara Shapel: Two one day workshops: October 16, 17. Cost: \$40 per workshop. Day one: "The Art of Machine Quilting" This is a beginner level quilting workshop where you will learn proper basting techniques, which machine needles to use with specific threads, and the differences between the various quilting threads that are currently on the market. You will then work on a practice sampler and learn how to stitch over a dozen free motion quilting stitches.

Day Two: "Thread Painting, Three Samplers" This workshop is for those who are comfortable (continued on page 5)



Sweet Pea Quilting

25 Roberts Street, Ladysmith,
British Columbia, Canada
V9G1A2

www.sweetpeaquilting.ca
Email: sweetpea.quilting@shaw.ca
Telephone: 250-245-2114

Long Arm Quilting

See us for your machine quilting needs.

- Quick 2 week turnaround
- Computerized and custom quilting

We also carry a fabulous selection of current fabrics, threads, notions, patterns and books.

Just 1/2 block off the Trans Canada Highway



SERGE & SEW



250-390-3602



105 Nored Plaza, 6750 Island Hwy., Nanaimo

Featuring fabulous Quilting fabrics,
Books, Patterns & Notions
Authorized PFAFF & Babylock dealer:
servicing & repairs to most
sewing machines & sergers.

Check our website
www.sergesew.com
for EVENTS & SALES!



(continued from page 4) with their stitching but would like to take it to the next level. Students will get started on three different samples: butterflies in a field, the head of a Great



Blue Heron and the moon. Each sampler features stitches that Barbara uses all the time to add depth and dimension to her fiber art pieces. Each of the samples will be approximately 15" square when finished. Topics to be covered include what thread to

use and when, the order of quilting, using a hoop, outlining, and transferring images to fabric and how to make the pieces two-sided. To see Barbara's work www.barbarashapel.com

Angela and Caroll met with Barbara Shapel on March 10 where she was presenting a two day workshop to the Victoria Quilt Guild. Her samples were amazing to see and our chat with the participants confirmed our impression of Barbara: a lovely lady, great information on needles, threads, and techniques.

If you were unable to register for these workshops at the meetings, contact Lise Skalos at nqgprogramme.lise@shaw.ca or 250-754-9636.

Angels: We need Angels for the 2010-2011 workshops. If you are interested in volunteering, please let us know. We need two per day. Angels make the workshops run smoothly. They meet and greet the instructor, retrieve and set up and clear out the equipment needed, ensure coffee and tea are available to the participants, check attendance etc. We have an outline to guide you along for the day. It's also an invaluable opportunity to take in the classes being presented and learn lots from the instructor and your fellow quilters.

Phillipa Zapf's Trunk Show is close approaching!! April 21!! At the beginning of our May meeting, which is only an evening meeting due to elections, Bruce Sharock will present an overview of a Cruise Shop Hop to Hawaii.

Your Program Committee is busy planning many events for you to enjoy during the year 2010 – 2011. As our plans firm up, we will keep you posted. *Angela McKenzie, Lise Skalos, Sandy Radley, Sue Thurmeier, Bonnie Dormuth, Caroll Rumo*



Three projects from Kathy Bush's February classes. More will be shown at the April meeting



**Huckleberry's
Fabrics Inc.**

1930 Ryan Road East
Comox, BC, V9M-4C9
250-339-4059

1-877-339-4059 Toll Free
e-mail : sewfun@telus.net

Easter Egg Discount Days

Pick an egg and that's your discount
10%-30% off
all Regular priced fabrics, patterns,
notions, and books

Starts Thursday, April 1st (no fooling)
till Monday, April 5/10 (Easter Monday)





Library News

A few of the new additions to our library:

- B-10-001 Bargello Quilts with a Twist, Maggie Ball
- B-10-004 Creating Your Perfect Quilting Space, Lois Hallock
- B-10-005 Radiant New York Beauties, Valori Wells
- B-10-006 Organizing Your Craft Space, Jo Packham
- B-10-009 Applique Takes Wing, Jane Townswick
- B-10-010 Raggedy Reverse Applique, Kim Denault
- B-10-012 Photo Inspired Art Quilts + DVD, Leni Wiener
- B-10-013 Fast Fun & Easy Fabric Postcard, Franki Kohler
- B-10-016 Cotton Theory 2 – Traditional Blocks, Betty Cotton
- B-10-018 A-Z of Thread Painting, Sue Gardner
- B-10-019 Fabric Embellishing the basics & Beyond, Ruth Chandler ed.
- B-10-023 Crazy Curves, Elisa Wilson
- B-10-024 Fabric + Paint + Thread = Fabulous, Pat Durbin
- B-10-028 Out of the Box - unleash your creativity through quilts, Kathy Emmel
- B-10-029 More! Hand Applique by Machine, Beth Ferrier

New materials are arriving all the time! We are presently weeding our magazine collection. Watch for our sale of Library discards coming in May! Don't forget your library materials for the next meeting! *The Library Team*

LOST: Two sets of extension cords. One is on an orange reel and the other is on a long bar. Does anyone still have these from a previous function or know where we could find them? Your help would be greatly appreciated. *The Program Committee*

COMMITTEE MEMBERS

If you are ill or away for one of the Guild meetings please notify your **Chairperson** to ensure someone takes over your duties during your absence. It is strongly suggested that all incoming and continuing committee chairpersons attend the June 10 executive meeting. Our Treasurers will fully explain how to fill in the necessary forms after each Guild meeting.

COMMITTEE JOB DESCRIPTION BINDERS: Please have your "Job description binder" up-dated as they will be returned to the presidents at the June 10 cross-over meeting. These binders help prospective committee members to decide which position suits them best. Thank you for taking care of this.

PHOTOCOPYING: Please search your memory. We are trying to find out who went to PRINT 3 on December 15 and had 176 copies of flyers printed. We need to know which account to charge. If you have any knowledge of this contact: Corinne Perry at coperry@telus.net

Membership

As of the March meetings we have a grand total of 235 members! If there are changes to your information please let us know so there will be no interruption to your newsletter delivery. *Tracy and the Membership committee*

Kismet Quilts

5334 Argyle Street
Port Alberni
V9Y 1T8
250-723-6605

Monday-Saturday 10 am - 5 pm



www.kismetquilts.com

*Long Arm Quilting Services, Fabrics, Notions, Books,
Gifts, Large Selection of Wide Goods, Classes*



Snip & Stitch SEWING CENTRE

Discover the world of sewing!
"Wander through our store
for a refreshing experience"

Linda Crawford Returns

Basic Bra Class April 15 & 16
& Her New
Advanced Bra Class
April 17 & 18

Learn how to make your own undergarments,
you'll always have the colour/design you want!

Jan Bones is back with her Dress Form Class,
and 2 New Classes on how to Create Patterns.
3 Workshops for creating the perfect
outfit for you! Don't Miss This!
April 30, May 1 & 2

Snip & Stitch Sewing Centre Ltd. is located at:
#1-4047 Norwell Dr., Nanaimo BC, V9T 1Y6.
Phone us at 250-756-2176 or 1-800-789-1730
www.snipandstitch.com



Blocking your Quilt

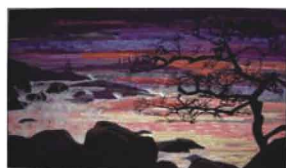
Many thanks to Coreen Zerr for sharing her instructions.

To Block Your Quilt:

- Measure your quilt through the middle both vertically and horizontally.
- Using these measurements and masking tape, mark off the area where you are going to block your quilt-this can be a carpeted area or waterproof surface -such as a freezer or counter top, or table.
- Measure to make sure it is exactly the size of your finished quilt. T square rulers can help with this step.
- Lightly dampen your quilt with water (spray bottles work great)
- Tape your quilt right side down to exactly match the masking tape you have prepared. This could involve stretching, or there may be some excess fabric bulging. If you are working on carpet you can put straight pins into the carpet through the edge of the quilt rather than using masking tape.
- Spritz with spray starch and with water.
- Aggressively iron your quilt flat using lots of steam-shot of steam works great. Make sure you lift the iron straight up and down as you press-don't drag it! The more you do this the flatter your quilt will hang.

Leave the quilt to dry at least 2 days before removing the masking tape and lifting the quilt. It will be totally flat, so make sure you hang it or store it properly-flat or rolled-do not fold!

©Coreen Zerr



Coreen Zerr
Quilt Designer
and Instructor

36 48 Glen Oaks Drive
Nanaimo, BC V9T 5L3

Phone: 250-756-1683
Cell: 250-619-7060

Corsew Designs

*For Spring 2010 classes offered in my
home studio, guilds, and quilt shops,
please check my website*

www.coreenzerr.com

e-mail:
corsew@shaw.ca



March Raffle Winners

Mystery Fabric: Day: Penny Whittaker Evening: Vivian Scott
Raffles: Day: Carol Bailey, Mary Compton, Pat Sweeney,
Chris Mousseau, Carol Rumo, Shirley Fulla, Deri Morris,
Gwyn Oaten, P.J. and R.F.

Evening: Deri Morris, Sandra Radley, Nancy Lutes, Linda
Addison, Judith McLaughlin and M.R..

Door Prize: Day: C.T. Evening: Laura Morrissey

Show and Share: Day: P.J., B. D. Evening: Laura Morrissey
Block of the Month : Norma Franks (those concerned with
web privacy have only their initials included)

You will notice we have two kinds of Raffle tickets for sale
at all Guild functions. The **Mystery Fabric Raffle** supports
a Bursary the Guild gives to a graduating secondary school
student. **Regular Raffle** ticket dollars are given back via
prizes at the Guild meetings and events. We thank you for
your continued support in purchasing these tickets.

Our thoughts are with Marg and Don Carmichael, whose son
Allen passed away recently. A Celebration of Life will be held
in Calgary on April 17. From Marg and Don: Thank you for the
phone calls, flowers, e-mails and cards that we have received.
It means so very much to be remembered by friends. Life is
so very short and as we all know, losing someone you love
makes you realize how much we need one another. The
website with Allen's obituary is <http://www.legacy.com/can-calgary/obituaries.asp?Page=Notice&PersonID=140669967>

BIB n' TUCKER QUILTING

April Sale

All tone on tone purples

All tone on tone yellows

**25% - 35% off 2m + (same bolt)
1/2 m minimum cuts**

**Fabrics available for
"Lake Forest" by Pine Needles**

343 D Bay Street (at Turner) Victoria BC
(Lower Rear GRAVEL YARD parking lot)
386-6512 (Mon- Thurs 10-4, Sat 12-4)

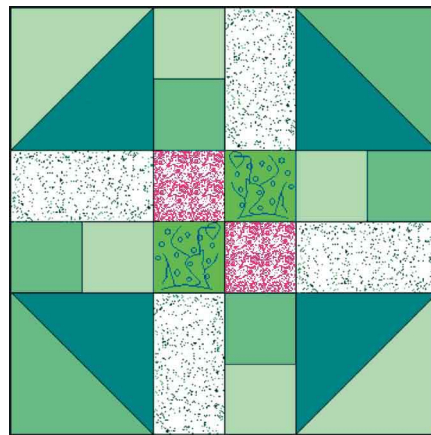


May Block of the Month

Thanks again to those who participated in the Block of the Month draw for March. Congratulations to Norma Franks, who won 13 beautiful Spring Flowers blocks. Good work, quilters. This month's block is called Linda's Leftovers and is based on a block which Linda designed using leftovers from a Jewel box quilt. We have chosen to do it in a spring fresh combination of greens with a warm splash of red. For those who receive the black and white printed version, the sketch shows the greens as numbers.

Remember, accuracy in cutting and piecing is important. All seams are $\frac{1}{4}$ ". Block is $12\frac{1}{2}$ " x $12\frac{1}{2}$ " (unfinished).

Fabric Choices: The neutral in this block is white. If possible, choose a white with a small black design, either floral or geometric. Choose a red that has a lot of white in it.



Linda's Leftovers

- Dark green (1): 2: $4\frac{7}{8}$ " x $4\frac{7}{8}$ "
- Med green (2): 1: $2\frac{1}{2}$ " x 5"
- Med green (3): 1: $4\frac{7}{8}$ " x $4\frac{7}{8}$ "
- Light green (4): 1: $2\frac{1}{2}$ " x $10\frac{1}{2}$ "
- 1: $4\frac{7}{8}$ " x $4\frac{7}{8}$ "
- 1: $2\frac{1}{2}$ " x $10\frac{1}{2}$ "
- Red 1: $2\frac{1}{2}$ " x 5"
- White 4: $2\frac{1}{2}$ " x $4\frac{1}{2}$ "

Construction:

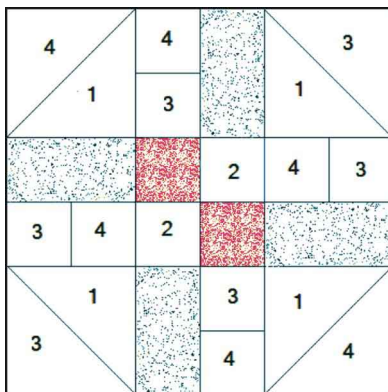
Start by making the four half-square triangles for the corners.

Use the two $4\frac{7}{8}$ " dark green squares with the medium and light green $4\frac{7}{8}$ " squares. Mark the diagonals of the dark squares. Place one of the dark squares on one medium square and one on the light, right sides together. Sew a seam $\frac{1}{4}$ " away from either side of the marked line. Cut on the marked line (corner to corner). You will have 2 half-square triangles from each set. Press to dark.

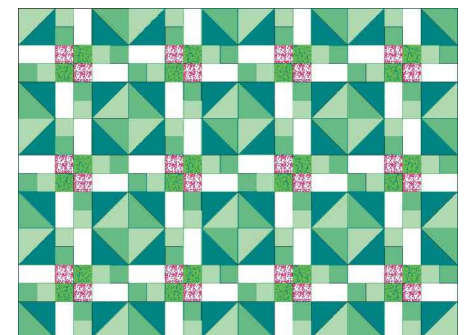
Make the red and green 4-patch unit for the centre. Sew the red strip to the medium green (2) strip. Press to green. Cut into 2 units. Assemble the 4-patch. Sew the light and medium green strips together. Press to medium. Cut strip set into four $2\frac{1}{2}$ " 2-patch units. Lay out the block. Be sure to check the position of the light green square relative to the white strip. Sew a white strip to each of the four 2-patch green units. Lay out the block and sew together. Press.

I hope the instructions are clear enough. However if you have any questions, suggestions or problems, please call me at 250-758-1185. Wishing you joy, Val Ansell and Sandra Radley.

Since there will be no meeting in June, there will not be a block of the month for June either. We felt everyone would be too busy on their show quilts to have time for anything else. We will be back in the June newsletter with a block for September.



Sketch of Block



Sample Quilt



April Specials to Welcome Spring!

Selected Books - under \$10
Selected Patterns - under \$5

****limited quantities of some items****

Why not join us on our
Quilt Cruise to Alaska,
September 2010

~ details on our website ~



patch
works
studio

Order online or by phone
www.patchworkstudio.com
email: patchworkstudio@shaw.ca
phone: 250-595-4411

GRAMMA'S
QUILTING CUPBOARD
Fabrics • Patterns • Notions • Classes

Ph: (250) 248-8449 P.O. Box 606
Fax: (250) 248-8451 #1-180 Craig Street
Marian Whitney Parksville, B.C. V9P 2G7

grammas_quilting_cupboard@shaw.ca
www.grammasquiltingcupboard.com



Minutes of March 17, 2010 General Membership Meeting

Meeting called to order at 1 pm by Co-President Barb Root.

Hospitality: Hostess Ingrid Morton introduced 5 guests: Eleanor Pendziwol, Eileen Brash, Ann Cannon, Mary Compton and Patty Cronk. Welcome ladies!

Minutes: The minutes were approved as circulated in the newsletter.

Correspondence: Founding member Audrey Curtis was recognised. Audrey is seeking information regarding the origins of the Nanaimo Bar recipe. Please contact her if you have stories to share. A sympathy card was sent to Margaret Carmichael on the death of her son. A get well card was sent to Hedy Hansen. An email was received from Phyllis Prince, thanking the guild for their support and good wishes as her daughter goes through a long recovery period following her surgery. A thank you card was received from Haven House thanking guild members who participated in the January Quilt Bee. A note was received from member Carol Phinney, thanking the guild for putting on great workshops and giving kudos to Patty McRory and the angels on March 13. Brochures were received from Guilds for their Quilt Shows (details in newsletter). An invitation to take part in this year's Empire Day Parade was passed on to the Quilt Show Committee.

Treasurer's Report: The Treasurer's report was approved as read. Carol Bailey reminded new and former Chairpersons of all committees to attend the June 10 meeting to familiarize themselves with the necessary report forms that the Treasurer requires. Members who receive their newsletters by mail are reminded to make out a separate cheque for \$10 (marked Newsletter mailing) when they pay their dues next fall. This money goes directly to newsletter pay for mailing costs rather than to membership.

COMMITTEE REPORTS:

Quilt Show: (also see pages 2 & 3) Lillian Charron reported on the raffle ticket sales at the Victoria Sewing Show (250 sold) and thanked those who helped. She reminded members to pick up more books of tickets to sell. The Demonstration Committee will use material from Shelly Fraser's stash to make donation quilts at the Quilt Show - these quilts will be donated in Shelly's memory. The deadline for entry forms for the Quilt

Show is the April 21 meeting. Bonnie Dimitry will be phoning all members who have not yet volunteered for the show. See page 7 for details on how to block a quilt. The deadline for entries for the postcard challenge is the May 19 meeting. Gail Lambourne thanked Sue Creba for all the splendid work she has done on publicity items for the Quilt Show. The webmaster has been great. Members are reminded to keep checking our website for up to date information about the Quilt Show. Articles and ads about the Guild and the Quilt Show are in the Nanaimo Magazine, Synergy Magazine and in the Spring issue of the Leisure Guide. Posters will be available at the April meeting for members to post around the community, please be thinking of good locations for them. Gail reminded everyone that "word of mouth" is still the best advertising for the Quilt Show. Please make lots of items for the Quilt Show Boutique. Morag Orr-Stevens has forms for sellers if you do not have a computer, otherwise the forms can be found at the end of the February Guild Newsletter.

Program: see article page 4. **Website Liaison:** Avril reminded everyone to please not appear in photos if privacy is an issue for you. **Coffee:** Members were reminded to bring their own mugs and take them home to wash. Mugs will only be available for guests and new members on the day of their joining the guild. **Donation Quilts:** Members were thanked for their donations this year and encouraged to make more quilts. In the evening, Gary Carleton and Rebecca of the Red Cross were on hand to receive 19 donation quilts for the Cowichan Relief effort. They thanked guild members for their generosity. **Library:** Linda Addison noted 3 items of interest in the latest CQA Magazine: an article with photos about our 25th Anniversary Celebration, a photo of Patty McRory's quilt that was part of the "O Canada" Exhibition, an article introducing Cindy Scraba as a new writer for the magazine and her article on making a sunflower pillow using Texture Magic.

NEW BUSINESS: Members are asked to think about which Executive or Committee positions they would be willing to take on next year. PLEASE TAKE YOUR TURN TO HELP OUT YOUR GUILD. The election will be held at the May meeting, which will be an evening meeting only.



Judy Farrow
Fabric Artist

911 Little Mountain Road
Parksville, BC. V9P 2C3
Canada
250 954 3797
judyfarrow@shaw.ca



Stitches

phone: 250.537.8985
Creativity@StitchesFibreArtSupplies.ca
www.StitchesFibreArtSupplies.ca

127 Rainbow Road Salt Spring Island, BC V8K 2V5



Quilt Shows

Quilt Canada 2010, April 26 - May 1, Calgary Telus Convention Center and Hyatt Regency Hotel, Calgary, Alberta All info at: www.canadianquilter.com Workshop registrar: Jackie Philpott administration@canadianquilter.com Ph:1.877.672.8777 Fx:1.866.603.7040

Fidalgo Island Quilters Quilt Show, April 2 & 3, 10-5, Anacortes Middle School, Corner of 22nd & M Ave., Anacortes, Washington. Admission \$5, <12 free *Fidalgo Island Quilters Quilt Walk* April 1-30 Quilts in downtown Anacortes www.fidalgoislandquilters.com

Lions Gate Quilters' Guild, 10th "Album of Quilts" Fri. June 11 9 - 7, Sat. June 12 9 - 5 Admission \$6, children <12 free. Delbrook Community Centre, 600 W. Queen's Road (Delbrook/Westview), North Vancouver 17 Merchants! Tea Room, 200 quilts, raffle quilts www.lionsgatequiltersguild.com

Blue Mountain Quilters' Guild "Quilts Galore", October 16-17 Saturday 10-5, Sunday 10 - 4 Montgomery Middle School, 1900 Edgewood Avenue (just south of Austin Ave) Coquitlam www.bluemountainquilters.ca

Abbotsford Sewing & Craft Show, April 15-17 info: joepapa@greentreeshow.com



Classes • Books • Charts • Fibres • Fabrics • Supplies



#7, 70 Church Street
Nanaimo 250-591-6873
www.thestitchersmuse.com

Upcoming events at The Stitcher's Muse:

Victoria Sampler Trunk Show ~ February 26 to April 10
See finished samples of many of these wonderful projects!

Romanian Point Lace workshop with Elena Iove ~ Saturday April 17 from 9 am to 5 pm Learn how to shape and make the needlelace fillings for this lovely technique. Crocheted braid supplied. Cost including kit \$75. Limited registration.

Our very first retreat! Come join Jackie du Plessis for the weekend of October 15 to 17. Meals, accommodation, and all supplies included, plus a goodie bag! Details to be announced. Limited registration.

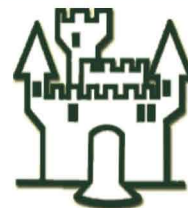
Quilt Projects

Victoria's Quilts Canada, a national non-profit organization which makes quilts for those with cancer.
magel5@shaw.ca www.victoriasquiltscanada.com

Parkinson's Quilt Project, Parkinson's Disease Foundation Quilt project made from panels 24" x 24", sewn together in eight foot sections. An opportunity for groups to create panels and sections. Quilt will be displayed at World Parkinson Congress (WPC) in Glasgow, Scotland from September 28 - October 1, 2010. Registration open until June 1, 2010 More info at: <http://support.pdf.org/quilt>

THE CLOTH CASTLE

786 Goldstream Avenue
Victoria BC V9B 2X6
Tel: (250) 478-2112
Fax: (250) 478-1050



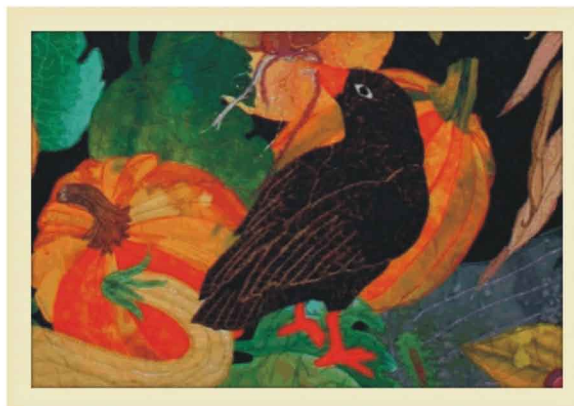
Your One Stop Sewing Shop

Dress & Specialty Fabrics, Drapery & Upholstery Fabrics, Quilt Fabrics,
Sewing Machines & Sergers Sales & Service
Classes and Sew Much More.

Website: www.clothcastle.com Email: theclothcastle@hotmail.com

Harvest Quilt Studio

Long Arm Quilt Services



Carol Bailey

by Appointment Only
NANAIMO (250) 244-3655
www.harvestquilts.com



Nanaimo Quilters' Guild Election 2010

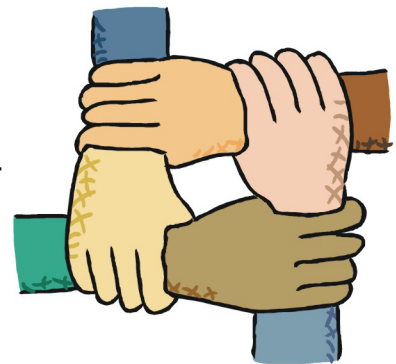


Your Guild needs YOU!

Ladies, it's that time of year again - the time when people decide to offer their services to the Guild, the community of quilters in which we are all lucky enough to participate!

If you wish to let your name stand for election to the Guild Executive for 2010 please let us know. As always, at the AGM, nominations will be accepted from the floor.

Please remember that a load shared is a load halved, and consider working with a partner. It really makes the commitment a lot easier! *Barb & Norma*



Remember, we are all in this together!

INSPIRING FABRICS • PATTERNS & BOOKS • NOTIONS & GIFTS



Creative Quilting for All Life's Phases

Open Daily!
1689 Government Street at Fisgard
Phone: (250) 383-4023
www.satin-moon.com

SATIN MOON AT CQA CALGARY
April 28th to May 1st

Nurturing customer service
in person, on the phone, or online.

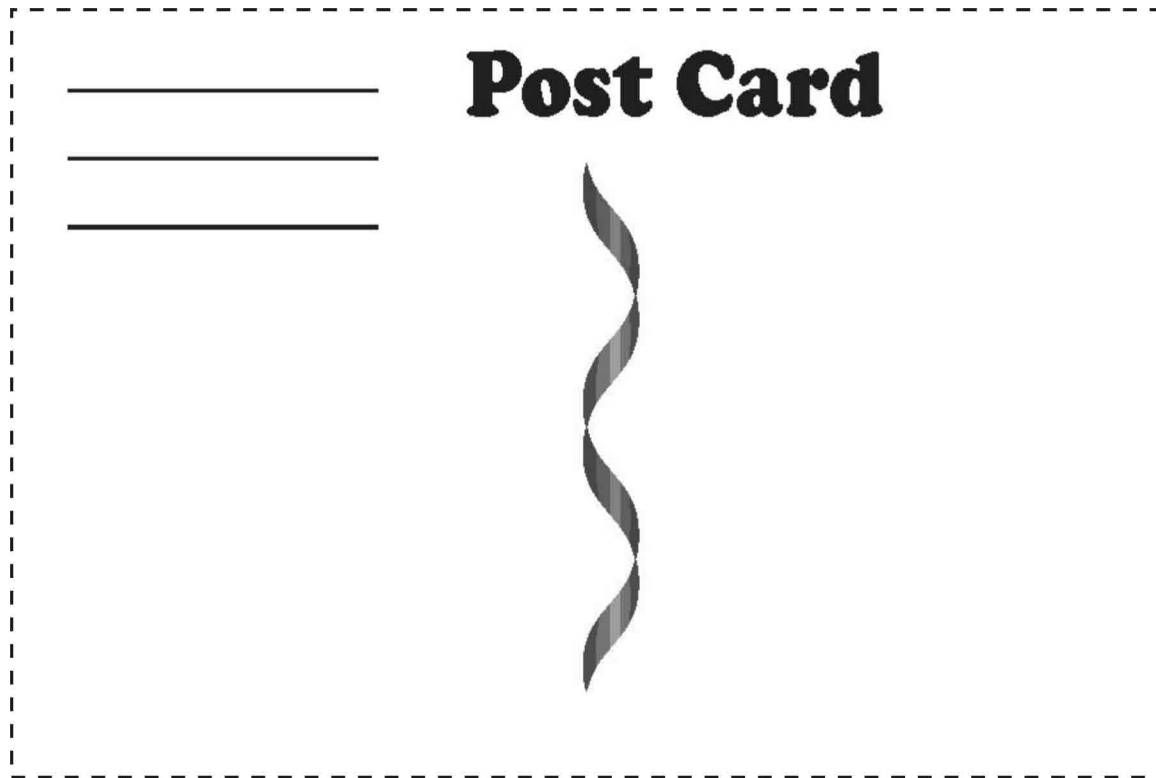
Explore your creativity with our
fine fabric & quilting supplies, kits & classes
& twice weekly blog
<http://satinmoon.wordpress.com/>



Visit www.cindysthreadworks.com
'Thread Candy Shoppe' Always Open

Largest Selection in Canada
Superior Threads!
Egyptian-Grown Cottons, Polyesters,
Metallics, Glitters, MonoPoly, more
NEW Titanium Top Stitch Needles

email cscraba@telus.net
Phone: Cindy Scraba 1 (250) 738 0560
(Located outside Qualicum Beach)



CREATIVE QUILTING
Authorized **Elna** dealer for the mid island.

**GIANT SPRING CLEANING
SALE**

~FABRIC~
~PATTERNS & BOOKS~
~(2)SEWING MACHINES~

Friday, April 16
9:30 a.m. to 5:00 p.m.

Creative Quilting
5869 York Rd. Duncan, B.C. V9L 3S3
(250)746-8033
creativequilting@telus.net

Food Bank

I would like to thank Val Ansell for stepping in and collecting all the donations for me while I was away enjoying myself on Thetis Island. (Quilting, eating, eating quilting, sleeping ah! that's the life).

But, back to reality. I was talking with Mike (Director of the Loaves and Fishes Food Bank), and he informed me that they are very short of – wait for it – PEANUT BUTTER. Who'd of think it? So this months suggestions for those who like to have them is, Peanut Butter and or Cereals (Dry Cereals, instant oatmeal, regular oatmeal, Baby cereals, anything in the cereal line). Of course your pantry shelf always gives us a good selection.

Thanks to all those members who participated in donating this month. We really brought their stock of Soap and Tissues up for them this month. *Norma Franks.*

The 100 Mile Fiber Fest is an online showcase of textile creations made with locally raised and grown fibers. Using local fibers supports the local economy and community, helps the environment, and helps nurture this local textile community.

www.100milefiberfest.blogspot.com

email: Fiberfest@hotmail.com