

NANAIMO QUILTERS GUILD



VOLUME 28 – ISSUE 5 – February 2012

www.islandquilters.ca

Editor sandrahreno@yahoo.ca

Submission **deadline** for Newsletter
no later than **22nd** of each month.

Next Meeting

February 15th 2012
Brechin United Church Doors
open at 12:30 & 6:30 meeting
starts at 1:00 & 7:00

Next Executive Meeting

February 6th at 1:30pm
Country Grocer, Southgate.

Things to Remember:

- Your own cup !! please
- * name tag
 - *Library Books
 - *Completed workshop registration form and fees
 - * Donation placemats/quilts/show and share.
 - *Change for raffles
 - *Bock of the Month

Yummy Baking !!

Thanks to everyone who brings goodies for our meetings For **February it is L -M**

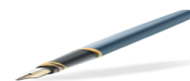
Membership/ Hospitality

Please stop at the hospitality table to sign in, and pick up your ticket for the name tag draw.. You must be wearing your name tag in order to win the draw. Please sign out if you leave the meeting early.

Web liason

Sue Creba **Please send any photos or articles for our web site to**
suecreba@aquariusD.com

From our PRESIDENTS PEN



Here's to a belated thank you to our Christmas Potluck elves who organized and hosted a great social. The food was wonderful with lots of main dishes. And speaking of elves, did everyone see the elf ears on Penelope at the Raffle table? What a hoot!

In the September Newsletter a new column appeared called "Did you know that" researched and presented by our historians, Greta and Marsha. I look forward to this each month. The Guild is now 27 years old and our historians are locating the origins of our traditions such as the placemat program. The first quilt show I attended was in the hall of the St. Paul's Anglican Church downtown, a space no larger than our present meeting room. We and our Show Committee have definitely grown. May we continue to age gracefully.

Judith McLaughlin and Sherry Drebnicki, Co-Presidents



Happy Valentine Day February 14, 2012

FOOD BANK

Everyone who wishes to participate in our food bank donations project will have the list of items required by Loaves and Fishes (It is in our January newsletter).

Of course any staple food item is gratefully accepted. I will bring extra boxes to the February guild meeting as I hope that we will receive last months (snowed out) meetings donations and also February's donations. In November on a CBC Newscast, Food Bank Canada announced that 8,500 Canadians are using food banks, 25% more since the recession and children make up about 25% of these.

Thank you all for your support.

Norma Franks

NANAIMO QUILTERS GUILD

VOLUME 28 – ISSUE 5 – February 2012

www.islandquilters.ca

Pearls Satellite Group

In November 2011, The Pearls Satellite Group made a bed quilt and donated it to the Chemainus Fire Dept. for their annual fundraiser. We assisted in selling tickets for the raffle. A total of \$1600.00 was raised through their raffle. They adopted a family in the Chemainus area for Christmas and presented them with baskets of food and toys and various other items. The remainder of funds will be donated to a charity of their choice. Two years ago, we donated a quilt for their fundraiser and they raised \$1500.00 and the proceeds went to the Burn Center in Victoria

We would like to thank those that bought raffle tickets at the Christmas Pot Luck...I am sorry that someone from our Guild didn't win. Thank you Lillian Charron

Retreat 2012

As of today, we have 12 registrations for retreat 2012. We need at least 20 more if we are going to hold our spot at Homewood. We will need these registrations by the February guild meeting or unfortunately the retreat will likely be cancelled. Because I am away from March to May this year and also in September, I will be unable to drum up more registrations personally. In the January newsletter I requested someone to take over the registration process while I am away but no volunteers have come forward. The job would involve accepting the registrations, getting deposits to the treasurer, overseeing the room and sewing space allocation and making changes as registrations change (only while I am away.) If you would like to volunteer to do this, please call me very soon at 758-8660.

If you are thinking about attending the retreat and can make the commitment, please do so this month. If you have questions about retreat, please call me or email me before the February guild meeting. Thank you, Patty McCory

LIBRARY NEWS

All books are due back at the February meeting. Members have had them for 3 months & you're probably tired of reading them.

Wanted: Are you interested in running the library? It's a great job! Would be a good job for a group to take on to share the work. We will provide training & help.

BRIEF JOB DESCRIPTION:

Manages circulation of library materials.

1. Buys books & magazine subscriptions.& prepares them for circulation.
2. Keeps database of library material holdings in Excel

3. Organizes library at afternoon & evening meetings.
4. Attends Guild Executive meetings

If you would like more information, please contact the library gals.If you or your group are interested in this position for next year, please let our nominating committee know ASAP..

Cindy's Threadworks
On-Line Thread Candy Shoppe

Quality Threads & Essentials
FOR
Quilters, Stitchers,
Appliqué, FibreArts

www.CindysThreadworks.com

Cindy Scraba
Cinderella's Blog
Thread Talks/Workshops/Trunk Shows

cindysthreadworks@telus.net
1-(250)-738-0560
Vancouver Island, BC

NANAIMO QUILTERS GUILD

VOLUME 28 – ISSUE 5 – February 2012

www.islandquilters.ca

Program Committee Report

What a snowfall we had in January. We had a wonderful Trunk Show by Lori Mudrie planned for our meeting. We have confirmed with Lori that she will present her show at our October 2012 meeting.

The February meeting is mini-demos. Due to the snow, we were not able to sign up ahead of time for these demos. There will be a large poster listing all demos. The tables will be labeled and have a sign-up sheet. Please sign your name and take a seat. There will be 12 chairs for each table. **If the workshop is full please try to find a second choice.** If all tables are full, you can go back to your first choice but you will need to stand by the table. If the presenter does not have enough handouts for you, please print "handout needed" beside your name and I will make sure that you get a copy. (see Leslie Millward)

The afternoon sessions are **Daisy Pin with Arlene Kulai**, **Mitered Corner Placemat- No Binding! With Cathy Welte**, **Mini Trunk Show - Applique with Val Ursulak**, **Twin Sister Blocks with Penny Whittaker**, Silk Experience with Cindy Scraba, **Got Scraps? Do Something! with Ingrid Morton** and **Ten Minute Blocks with Linda Addison**. Unfortunately, Journal Quilting has been cancelled.

The evening sessions are **Silk Experience with Cindy Scraba**, **Ten Minute blocks with Linda Addison**, **Got Scraps? Do something! with Ingrid Morton** and **Beyond Nine Patch with Sandra Radley**.

Ever want to try a new technique or brush up on ones you know? Our workshops are just the ticket! Come and sign up for our workshops at the February meeting. We have all the samples on display. There are lots of spaces left for each workshop.

Upcoming workshops: Sat. Feb. 25 – **MOLAS with Val Usulak** (please give Leslie Millward (390-9077) a call if you are interested in signing up as time is short)

Sun. Mar.11 **Circle the Wagons with Kathy Klassen**

Sat. Mar. 24/Sun. Mar. 25 – **Touch of the Orient with Susan McGregor**

Sat. April 14 – **Sheers and Overlays with Daphne Greg**

Sat. May 5/Sun. May 6 – **Take a Leaf with Judy Farrow**

If we do not receive enough participants we will need to open the registration to outside our Guild. Sign up and join the fun at Oliver Woods Community Center!

The Program Committee is beginning to organize next season's workshops, Trunk Shows and Mini Demos. If you have a request, suggestion or would like to be a workshop presenter, please talk to any one of our committee members.

We always welcome anyone who might like to join our committee for the 2012-2013 year. Let us know if you are interested.

Finally, the Program Committee has 2 motions they would like to have discussed. They will be voted on at the April meeting.

1.Motion regarding non guild members fee structure for workshops:

Workshop Registration will be open to non guild members at the discretion of the Program Committee. In addition to the workshop cost, non members will be required to pay the regular Guild membership fee and become a member. (100% of the current membership fee for the Fall workshop and 50% of the current membership fee for a Spring workshop)

2. Fee structure increase:

**Beginning Sept. 2012, the fee schedule will be as follows:
\$40.00 for a one day class**

\$75.00 for a two day class

See you at the Guild Program sign up table !

NANAIMO QUILTERS GUILD

VOLUME 28 – ISSUE 5 – February 2012

www.islandquilters.ca

WORKING WITH WHAT YOU HAVE

DATES: April 17-20, 2012 (4 days) 9:30 – 4:00pm

INSTRUCTOR: Martha Cole

LEVEL: Intermediate, with some knowledge of free-motion stitching.

MATERIALS FEE: \$ 10-20 per participant

COURSE DESCRIPTION

Do you have a stalled textile work hanging on your studio wall unfinished? Do you have a stack of unfinished projects that you've lost interest in? Are you getting somewhat bored with the current work you're doing, but aren't sure where you want to go next? If any of these apply, *then this is the course for you!!!*

The creative process is an exciting adventure when we know how to approach it. We ALL have creative potential - the trick is how to develop it! Sometimes all we need to do is look differently at what is already at hand and put the skills we already have to new uses! Using any stalled or older "works-in-progress" that you have on hand, we will explore ways to transform those images into unique machine-stitched art works. We will combine, re-combine and assemble what we have with us, using both applique and free-motion embroidery techniques

(maybe even some piecing!).

We will discuss and move through the steps of the creative process while working on our pieces and, by the end, you will understand "how it all works" as well as having a completely original fabric work.

Really, this class IS FOR YOU !!!!

Workshop Fee: \$425.00 + HST

A \$100.00 deposit will hold your.

place in this workshop, \$25.00 is non refundable

gdalyart@shaw.ca www.studiogart.com

Studio G Art Gloria S. Daly ,

7298 Somenos Road

Duncan, BC

V9L 5Z9



SERGE & SEW

250-390-3602

105 Nored Plaza, 6750 Island Hwy., Nanaimo

SEPTEMBER SPECIALS

- PFAFF Expression 2.0 with free Go Baby™
- PFAFF Expression 4.0 with free Tool Box
- Baby Lock Symphony with \$100 gift Certificate

Check our website www.sergesew.com

for EVENTS & SALES!

Authorized PFAFF & Baby Lock dealer
Servicing & repairs to most sewing machines & sergers.
Monday - Friday 10 - 5:30 Sat 10 - 5 Sundays closed

NANAIMO QUILTERS GUILD

VOLUME 28 – ISSUE 5 – February 2012

www.islandquilters.ca

SAMPLER PHOTO ALBUM

2012 Studio G Art (See page 4 for address)

INSTRUCTOR: Martha Cole

DATES: April 23- 27, 2012 (5 days) 9:30 – 4:00

LEVEL: All bookbinding skills covered in class.

MATERIALS FEE: tba

COURSE DESCRIPTION

The classic photo album is a particularly versatile structure which offers a surprising range of benefits that are often overlooked. Because each page is created separately there can be a wide variation in page thickness and materials, as well as in the album as a whole. Materials can range from thin chiffons and tissues to corrugated cardboard or metal sheeting! The pages can have inserts or windows, pop-ups and fold-out pages. It can also be easily taken apart and reassembled allowing for ongoing page additions over time.

We will start by exploring the mark-making potential of wheat paste on a flexible cloth cover and as the basis for the decorative/collage elements of the interior. The focus of the workshop will be on the basic construction of the album and the principles that need to be considered to make it function well no matter what materials are incorporated into it. We will explore a wide range of options and questions. To do this, we will make a number of page “samplers” each of which will illustrate a different method of attaching photos, collage images, stitched works, envelopes, pop-ups, fold-outs, etc.

You will need to bring a range of images, a few trinkets or small stitched images, and a variety of different papers and fabrics. A set of photos or images will also be used as the “samples”. Each page will have a different “solution” rather than being a finished unified journal.

Workshop Fee: \$525.00 + HST

A \$100.00 deposit will hold your place in this workshop, \$25.00 is non refundable.



**Huckleberry's
Fabrics Inc.**
1930 Ryan Road East
Comox, BC, V9M-4C9
250-339-4059

1-877-339-4059 Toll Free

e-mail : huckleb@island.net

February at Huckleberry's

Ruffled Revival Bag-Saturday, February 4/12

Stack N Whack- Sunday, February 5/12

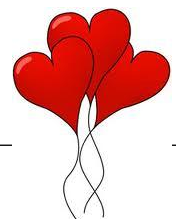
Lil'Twister-Wednesday, February 8/12

Butterfly Applique-Saturday, February 11/12

Demo Day-Saturday, February 18/12

Disappearing 9 Patch-Sunday, February 19/12

Check us out on Facebook:



NANAIMO QUILTERS GUILD

VOLUME 28 – ISSUE 5 – February 2012

www.islandquilters.ca

Professional Development

Time: 9:30 – 4:00

Date: April 29-30, 2012

Location: Studio G Art – Duncan

Martha Cole will be facilitating a **Professional Development** two day workshop.

Day One: What is Success? How do you measure success? Is it about you or your work?

Day Two: How to present your work and yourself to the world.

If you have specific questions please email them to me and Martha will address them in the workshop.

Tea & coffee provided bring your own lunch

Private Critique Session:

One hour - \$55.00 These will be held after the workshop starting at 4:30pm

Working With What You Have. April 17-20, 2012

A Sampler Photo Album April 23-27, 2012

www.studiogart.com

Gloria S. Daly , Studio G Art

7298 Somenos, RoadDuncan, BC V9L 5Z9

Workshop Fee: \$ 125.00 plus HST

Non Refundable deposit: \$35.00

*Make cheque payable to: Studio G Art

(Stay at the Cowichan Valley Inn

5 minutes from Studio G Art)



• Long Arm
Quilting
Services

www.kismetquilts.com

• Fabrics

• Notions

• Gifts

5334 Argyle St. Port Alberni BC V9Y 1T8
250.723.6605 lynn@kismetquilts.com

NANAIMO QUILTERS GUILD

VOLUME 28 – ISSUE 5 – February 2012

www.islandquilters.ca

QUILT SHOW REPORT – January 2012

Our first Quilt Show meeting was held on January 12, 2012 with 12 committee heads in attendance.

Cathy Welte has agreed to take on the position of Co Convener for the 2013 Quilt Show.

We still have one major committee to be filled...PUBLICITY...We have one volunteer, but we need at least 4 more volunteers to work on this committee.

It is very important that this committee be filled as soon as possible.

We are also looking for donations for the Quilt Show Raffle. We have one hand appliquéd quilt kindly donated by Val Ursulak. We need at least two more quilts for the raffle. If you or your group are interested in doing a quilt for the show, please contact myself or Cathy Welte.

THE OTHER POSITIONS TO BE FILLED ARE;

1. VOLUNTEER ROOM/VOLUNTEER LUNCH
2. PROPS/PRIZES
3. STUDENT QUILTS

Here are the descriptions for the open positions.

PUBLICITY...Review the Publicity Binder from the previous Quilt Show. Some of the duties of this committee will be to Contact CQA with show dates. Determine budget ahead of time. Contact magazines to put ads in about the show. Contact local newspapers, City of Nanaimo, radio and TV coverage prior to show dates. Arrange for outdoor signage in significant spots throughout the City and surrounding areas. Create 8x10 posters to hand out to the various shops and businesses. We have several of the posters in storage from the last show. Contact the Mayor for promotional pictures and arrange for his attendance at the opening of the quilt show. Create a final report of what was done for this show so that future show committees have a guideline. All these duties are recorded in the Publicity Binder.

VOLUNTEER ROOM/VOLUNTEER LUNCH....Review the manual for this committee as it contains information from the previous shows.

This room is for Volunteers to take refuge during the time they work at the show. We provide coffee and tea and goodies for the Volunteers. The responsibility of this Volunteer would be to keep this room tidy and make sure that the coffee, tea and other drinks and goodies are on hand for the Volunteers working on the days of the Quilt Show. On set up day, this Volunteer is responsible for providing lunch to the people involved in setting up the quilt show. The binder gives specific details on what was served at the previous show and what worked.

PROPS/PRIZES...The basic responsibility is to provide an entry display for the quilt show. Detailed information is provided in the Binder from the previous show.

PRIZES...Review the Manual from the previous quilt show. Determine how many prizes will be needed and collect the prizes. Merchants from the Merchant Mall usually donate one prize. If other prizes are needed, there is a list of city merchants who donated prizes for previous shows. Determine where the prizes will be kept during the show for easy access for the presentation at the end of the show. Contact CQA for Prize ribbon for Best of Show. Create a final report for post show committee meeting.

NANAIMO QUILTERS GUILD

VOLUME 28 – ISSUE 5 – February 2012

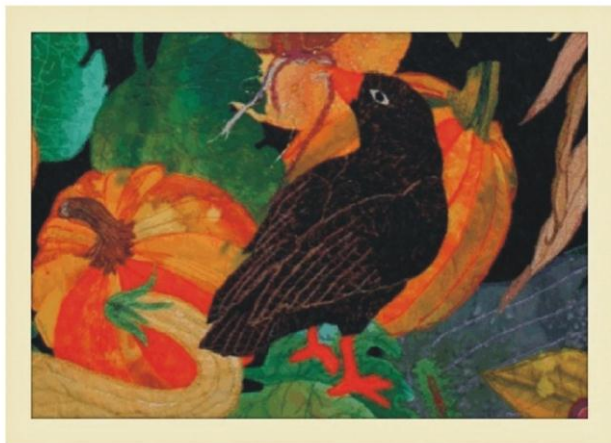
www.islandquilters.ca

STUDENT QUILTS....Contact schools' Home Economics teachers and kid's sewing groups for interest in displaying at the show. Determine if any prizes, ribbons, etc. are to be given and for what criteria. Arrange for quilts to be collected and displayed at the show with appropriate documentation. Arrange for owners to collect their quilts at the end of the show Create a final report for post show committee meeting.

Lillian Charron/Cathy Welte Conveners Quilt Show 2013

Harvest Quilt Studio

Long Arm Quilt Services



Carol Bailey

by Appointment Only

NANAIMO (250) 244-3655

www.harvestquilts.com

BIB N' TUCKER

QUILTING

February Sale

All tone on tone reds and pinks

All black with white &

White with Black

**25% off - 35% off 2m or More
(same bolt) 1/2 m minimum cuts**

343 Bay Street (at Turner) Victoria, BC

(Lower Rear GRAVEL YARD parking lot)

250-386-6512 (Mon-Thurs 10-4, Sat 12-4)



Flare Fabrics
BATIKS AND BOLD COTTONS

www.flarefabrics.ca

timeless treasure, robert kaufman, benartex
princess mirah, galaxy, hoffman, avlyn, riley blake
red rooster, fabrics that care, flannels, batiks, bolds
jelly rolls, layer cakes, fat quarters
patterns. kits



NANAIMO QUILTERS GUILD

VOLUME 28 – ISSUE 5 – February 2012



The Cloth Castle

Your One Stop Sewing Shop

Victoria's Exclusive Husqvarna Viking and Singer Dealer
www.clothcastle.com
 786 Goldstream Ave., Victoria BC V9B 2X6 250-478-2112

The Cloth Castle your exclusive Vancouver Island Handi Quilter headquarters! Studio frames and sit down quilting machines.



Handi Quilter Studio Frame

Made of high-quality steel, the HQ Studio Frame is a robust, professional-grade table and frame system for your home studio.



Handi Quilter Sweet Sixteen Sit Down

If you love to free-motion machine quilt but struggle to fit your project in a small throat space, you're going to love the HQ Sweet Sixteen®. Sixteen inches of throat space gives you room to quilt even a king-size quilt. The smooth surface of the included table allows your project to glide under the needle. The powerful motor handles quilting with ease and stitches up to 1500 stitches-per-minute. Choose your three favourite top speed settings, on the easy-to-use color touch screen and let the machine remember them.

Come in for a demo of either of these great machines!

The Cloth Castle your one stop sewing and quilting shop on Vancouver Island.

www.clothcastle.com



Your One Stop Quilting and Sewing Machine Store on Vancouver Island!

<p>Clip & Save Coupon!</p> <p>Come in From Feb 15-March 15</p> <p>Save 30% off Your Next Book Purchase</p>	<p>Clip & Save Coupon!</p> <p>Come in From March 1- March 30</p> <p>Save 30% off Your Next Pattern Purchase</p>
---	--

Hours: Sun. 12-4, Mon.-Sat. 9:30-5:30 (Open Fri. night if there is a class.) Closed Holidays and Sundays in July & August



#1-4047 Norwell Drive
 Nanaimo, B.C. V9T 1Y6
 1.250.756.2176
 1.800.789.1730
 Email: info@snipandstitch.com
www.snipandstitch.com

Husqvarna

JANOME

Get help with your quilt!



Let me help you get those unfinished quilts completed.

I have reasonable prices. Most edge to edge patterns are 1.5 cents per sq. in. Thread and optional trimming is included.

My return time is usually less than 2 weeks and my Gammel is a wonderful machine. I would be proud to work on your masterpieces.

BIRD HOUSE LONGARM QUILTING

461 Vancouver Ave.
 Nanaimo BC V9S 4G4
 (By Appointment)

Gail Stenberg
 250-753-6613
birdhouse1@shaw.ca

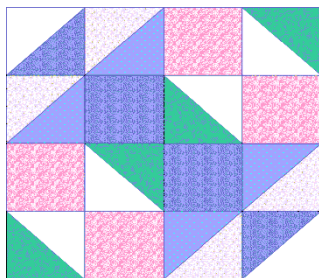
NANAIMO QUILTERS GUILD

VOLUME 28 – ISSUE 5 – February 2012

www.islandquilters.ca

March Block of the Month

Due to the cancellation of the January meeting there was no draw last month, so don't forget to bring both January and February blocks to this month's meeting. Hope the weather's not getting you down. But if it is, here's a pretty pastel block to cheer you up. It is a variation on School Girl's Puzzle that was originally printed in 1938 in Needlecraft Supply. We are calling it Pastel Puzzle. Hope you have as much fun making it as we did designing it. Remember all seams are $\frac{1}{4}$ ". Unfinished block is $12 \frac{1}{2}$ " square. Accuracy is important.



Pastel Puzzle

Fabric Choices and Cutting:

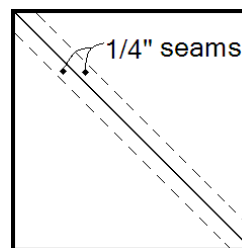
Choose fine prints or tone on tones and a white on white or fine print on white background. Choose 2 medium purples if you have them, otherwise use just one.

White	3:	$3 \frac{7}{8}$ " x $3 \frac{7}{8}$ "
Med green	2:	$3 \frac{7}{8}$ " x $3 \frac{7}{8}$ "
Medium purple 1	1:	$3 \frac{7}{8}$ " x $3 \frac{7}{8}$ "
Mauve	2:	$3 \frac{7}{8}$ " x $3 \frac{7}{8}$ "
Medium purple 2	2:	$3 \frac{7}{8}$ " x $3 \frac{7}{8}$ "
Medium purple 1	2:	$3 \frac{3}{4}$ " x $3 \frac{3}{4}$ "
Pink	4:	$3 \frac{3}{4}$ " x $3 \frac{3}{4}$ "

Construction:

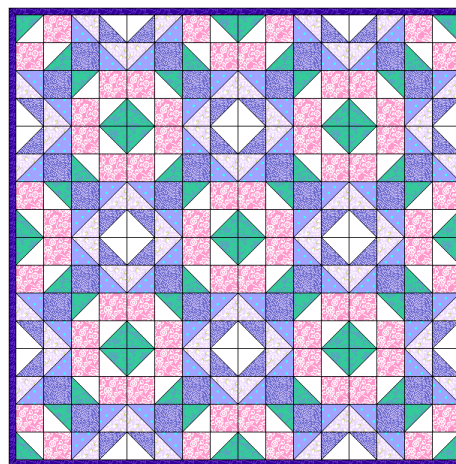
First make the half-square triangle units using the first five fabrics. Combine the medium green and medium purple 1 with the white and the mauve with medium purple 2.

To make half-square triangles place the lighter of the two fabrics *wrong* side up and draw a pencil line from corner to corner. Place the marked squares on the darker ones, wrong sides together with marked fabric on top. Using the diagonal line as a guide, sew a $\frac{1}{4}$ " seam on either side of the pencil line (*See sketch below*). Cut on the diagonal line and press the seams towards the darker colour.



Lay out the pieces and assemble row by row pressing adjacent rows in opposite directions. This allows the seams to nest together while sewing to keep corners crisp. Press. Be careful to check layout before sewing, for both colour and placement.

If you have any questions, suggestions or problems, please call me at 250-758-1185 or e-mail me at thornasite@gmail.com. Wishing you joy in the New Year, Val Ansell and Sandra Radley.



Quilt Layout Suggestion